

HAMPTON, VIRGINIA

# ILS or LOC Y RWY 26

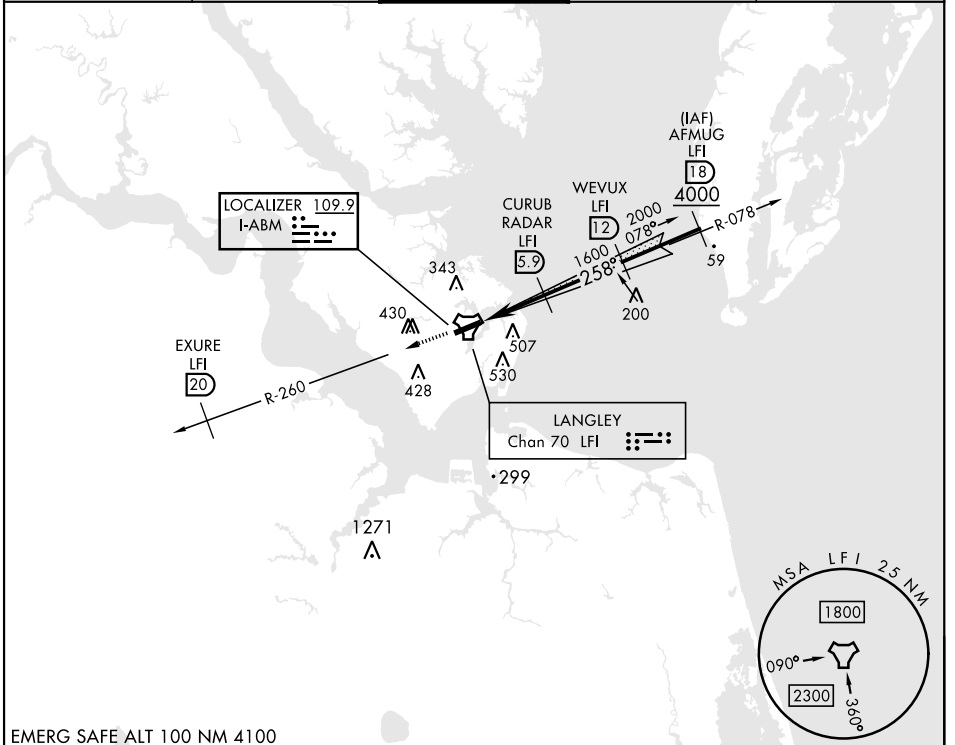
LOC I-ABM <b>109.9</b>	APCH CRS <b>258°</b>	Rwy Ldg <b>10,002</b>
		TDZE <b>8</b>
		Arprt Elev <b>8</b>

[USAF]

LANGLEY AFB (KLF1)

RADAR or DME required		ALSIF-1 	MISSED APPROACH: Climb to 3000 via LFI R-260 to 20 DME (EXURE), then as instructed by ATC.
<p>▼ * When ALS inop, increase RVR to 40 and vis to 3/4 miles.</p> <p>*** When ALS inop, increase RVR to 55 and vis to 1 1/2 miles.</p> <p>*** Circling S of Rwy 8-26 not authorized.</p>			

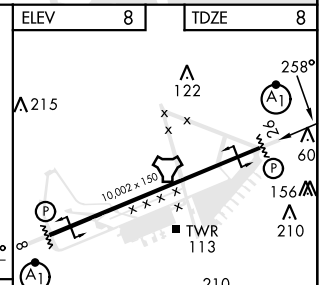
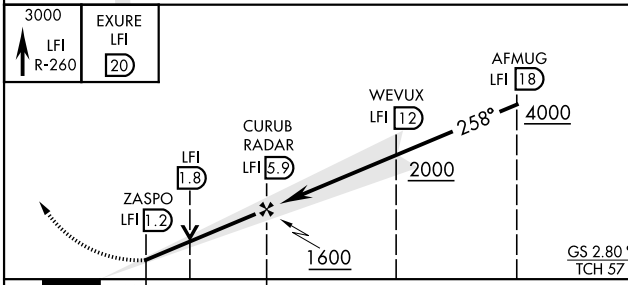
ATIS ★ <b>270.1</b>	NORFOLK APP CON <b>125.7 335.625</b>	TOWER ★ <b>125.0 253.5</b>	GND CON <b>121.7 275.8</b>	CLNC DEL <b>118.85 257.625</b>
------------------------	---	-------------------------------	-------------------------------	-----------------------------------



NE-3, 31 OCT 2024 to 28 NOV 2024

NE-3, 31 OCT 2024 to 28 NOV 2024

EMERG SAFE ALT 100 NM 4100



	A		B		C		D		E	
S-ILS 26*	208/24		200		(200-1/2)					
S-LOC 26***	380/24	372 (400-5%)	380/35		372 (400-5%)					
CIRCLING	540-1	580-1	700-2	760-2 1/2	760-2 3/4					
	532 (600-1)	572 (600-1)	692 (700-2)	752 (800-2 1/2)	752 (800-2 3/4)					

HIRL Rwy 8-26		FAF to MAP 4.7 NM				
Knots	60	90	120	150	180	
Min:Sec	4:42	3:08	2:21	1:53	1:34	

HAMPTON, VIRGINIA

37°05'N-76°22'W

LANGLEY AFB (KLF1)

Amdt 7 11AUG22

# ILS or LOC Y RWY 26