

# ILS or LOC Y RWY 8

LOC I-LFI <b>109.9</b>	APCH CRS <b>078°</b>	Rwy Ldg 10,002
		TDZE 8
		Arprt Elev 8

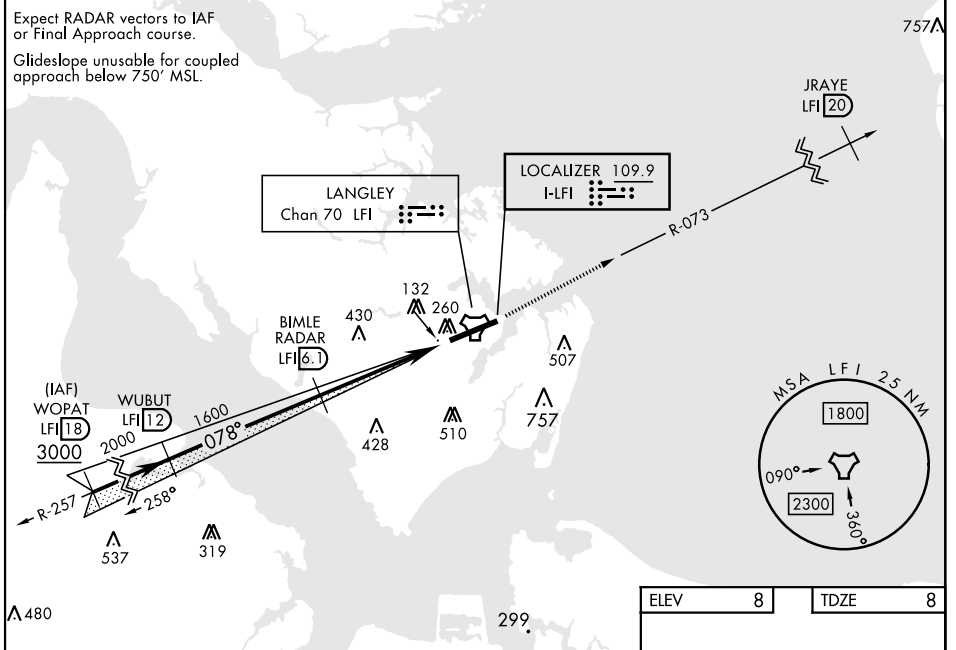
[USAF]

LANGLEY AFB (KLFJ)

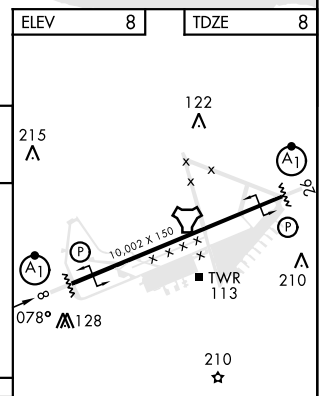
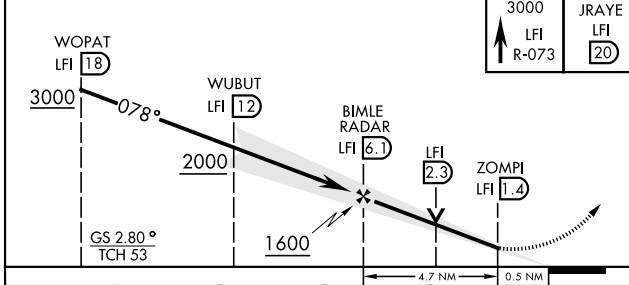
RADAR or DME required		ALSF-1 
<p>▼ * When ALS inop, increase RVR to 40 and vis to 3/4 mile.</p> <p>** When ALS inop, increase CAT AB RVR to 55 and vis to 1 mile, CAT CDE vis to 1 3/8 miles.</p>		MISSED APPROACH: Climb to 3000 via LFI R-073 to 20 DME (JRAYE), then as instructed by ATC.

ATIS * <b>270.1</b>	NORFOLK APP CON <b>125.7 335.625</b>	TOWER * <b>125.0 253.5</b>	GND CON <b>121.7 275.8</b>	CLNC DEL <b>118.85 257.625</b>
------------------------	---	-------------------------------	-------------------------------	-----------------------------------

\*\*\* Circling not authorized S of Rwy 8-26.



EMERG SAFE ALT 100 NM 4100



CATEGORY	A	B	C	D	E
S-ILS 8 *	208/24		200	(200-1/2)	
S-LOC 8 **	480/24 472 (500-1/2)		480/50 472 (500-1)		
CIRCLING ***	540-1 532 (600-1)	580-1 572 (600-1)	700-2 692 (700-2)	760-2 1/2 752 (800-2 1/2)	760-2 3/4 752 (800-2 3/4)

HIRL Rwy 8-26					
FAF to MAP 4.7 NM					
Knots	60	90	120	150	180
Min:Sec	4:42	3:08	2:21	1:53	1:34

# ILS or LOC Y RWY 8

NE-3, 31 OCT 2024 to 28 NOV 2024

NE-3, 31 OCT 2024 to 28 NOV 2024