

HAMPTON, VIRGINIA

# RNAV (GPS) RWY 26

WAAS CH 41171 W26A	APCH CRS 258°	Rwy ldg TDZE Arpt Elev	10,002 8 8
--------------------------	------------------	------------------------------	------------------

-(USAF)

LANGLEY AFB (KLFJ)

RNP APCH

▼ \* When ALS inop increase RVR to 40, vis to 3/4 mile.  
\*\* When ALS inop, increase RVR to 60, vis to 1 1/8 miles.

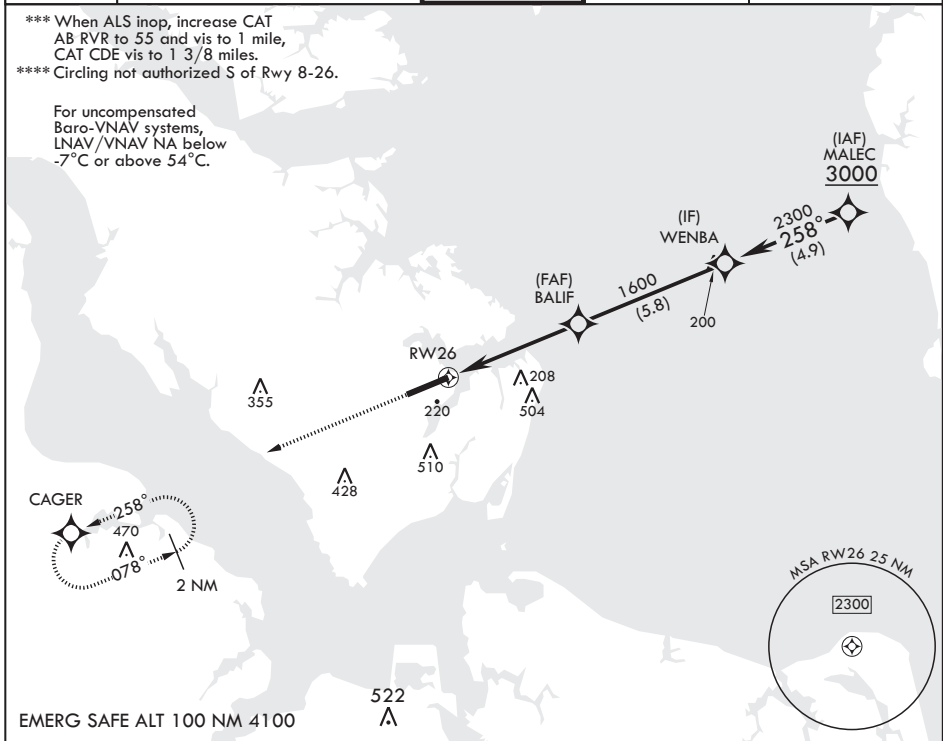
ALS-1

MISSED APPROACH: Climb to 3000 on course 258° to CAGER WPT and hold.

ATIS★ 270.1	NORFOLK APP CON/DEP CON 125.7 335.625	TOWER★ 125.0 253.5	GND CON 121.7 275.8	CLNC DEL 118.85 257.625
----------------	--	-----------------------	------------------------	----------------------------

\*\*\* When ALS inop, increase CAT  
AB RVR to 55 and vis to 1 mile,  
CAT CDE vis to 1 3/8 miles.  
\*\*\*\* Circling not authorized S of Rwy 8-26.

For uncompensated  
Baro-VNAV systems,  
LNAV/VNAV NA below  
-7°C or above 54°C.



NE-3, 31 OCT 2024 to 28 NOV 2024

NE-3, 31 OCT 2024 to 28 NOV 2024

3000 ↑	CAGER ⊕	ELEV 8	TDZE 8		
CATEGORY	A	B	C	D	E
LPV DA*	208/24		200	(200-½)	
LNAV/VNAV DA**	404/35		396	(400-¾)	
LNAV MDA***	480/24	472 (500-½)	480/50	472	(500-1)
Ⓢ CIRCLING****	540-1 532 (600-1)	580-1 572 (600-1)	700-2 692 (700-2)	760-2½ 752 (800-2½)	760-2¾ 752 (800-2¾)

HAMPTON, VIRGINIA

37°05'N - 76°22'W

LANGLEY AFB (KLFJ)

Amdt 7 28DEC23

# RNAV (GPS) RWY 26

HIRL all Rwys