

TACAN Y RWY 8

TACAN LFI Chan 70	APCH CRS 073°	Rwy ldg 10,002 TDZE 8 Arpt Elev 8
--------------------------	----------------------	--

[USAF]

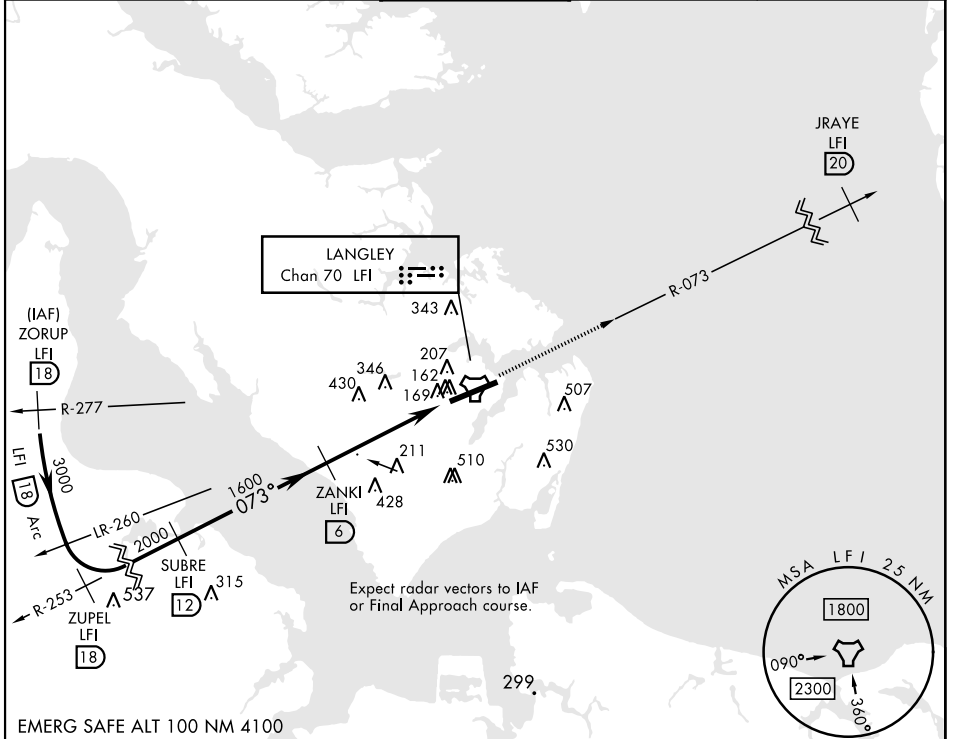
LANGLEY AFB (KLF1)

▼ *When ALS inop, increase CAT AB RVR to 55 and vis to 1 mile, CAT CDE vis to 1 3/8 miles.
 **Circling not authorized S of Rwy 8-26.

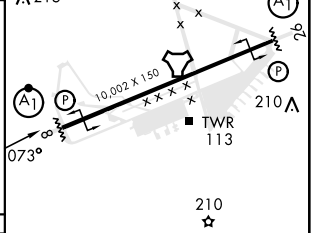
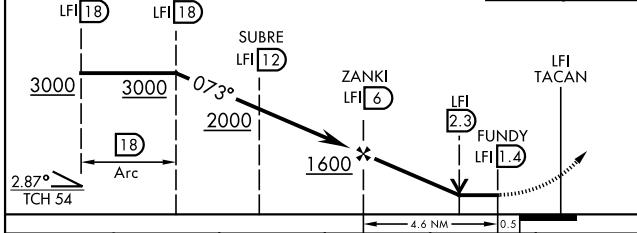
ALSF-1
A1


MISSED APPROACH: Climb to 3000 via LFI R-073 to 20 DME (JRAYE), then as instructed by ATC.

ATIS ★ 270.1	NORFOLK APP CON 125.7 335.625	TOWER ★ 125.0 253.5	GND CON 121.7 275.8	CLNC DEL 118.85 257.625
------------------------	---	-------------------------------	-------------------------------	-----------------------------------



3000 LFI R-073	JRAYE LFI 20	ELEV 8	TDZE 8
----------------	--------------	--------	--------



CATEGORY	A	B	C	D	E
S-8*	480/24	472 (500-1/2)	480/50	472	(500-1)
CIRCLING**	540-1 532 (600-1)	580-1 572 (600-1)	700-2 692 (700-2)	760-2 1/2 752 (800-2 1/2)	760-2 3/4 752 (800-2 3/4)

HIRL Rwy 8-26

TACAN Y RWY 8

NE-3, 31 OCT 2024 to 28 NOV 2024

NE-3, 31 OCT 2024 to 28 NOV 2024