

LOC I-MDT 110.9	APP CRS 128°	Rwy Idg 8070
		TDZE 308
		Apt Elev 310

ILS RWY 13 (SA CAT I)

HARRISBURG INTL (MDT)

ALSF-2
Requires specific OPSPEC, MSPEC, or LOA approval.

MISSED APPROACH: Climb to 900 then climbing left turn to 3000 on heading 070° and on ETX VOR/DME R-253 to KUPPS INT/ETX 39.3 DME and hold.

ATIS
118.8

ALTERNATE MISSED APCH FIX
HARRISBURG HAR
115.35
Chan 100 (Y)

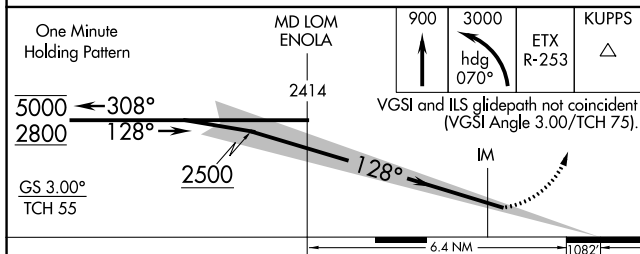
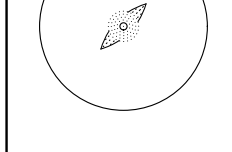
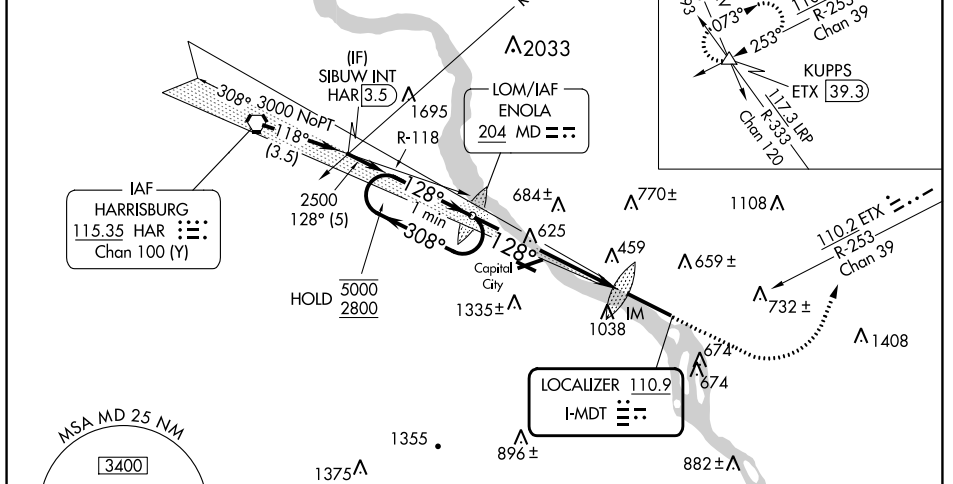
HARRISBURG APP CON

(080°-179°)	126.45	281.525
(180°-329°)	124.1	273.525
(330°-079°)	118.25	269.45

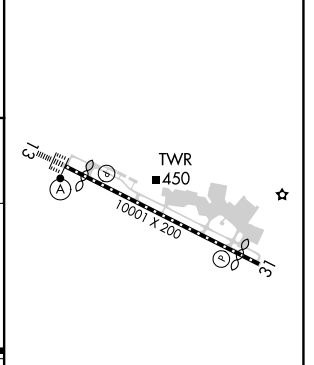
HARRISBURG INTL TOWER
124.8 269.35

GND CON
121.7 348.6

Procedure NA for arrival on HAR VORTAC airway radials 102 CW 157 and at HAR VORTAC on V12 eastbound.



ELEV 310 **D** TDZE 308



CATEGORY	A	B	C	D
S-ILS 13	RA 150/14 150 DA 458			

SA CATEGORY I ILS - SPECIAL AIRCREW & AIRCRAFT CERTIFICATION REQUIRED

TDZ/CL Rwy 13
REIL Rwy 31
HIRL Rwy 13-31

NE-4, 31 OCT 2024 to 28 NOV 2024

NE-4, 31 OCT 2024 to 28 NOV 2024