

LOC I-MDT 110.9	APP CRS 128°	Rwy Idg 8070
		TDZE 308
		Apt Elev 310

ILS or LOC RWY 13

HARRISBURG INTL (MDT)

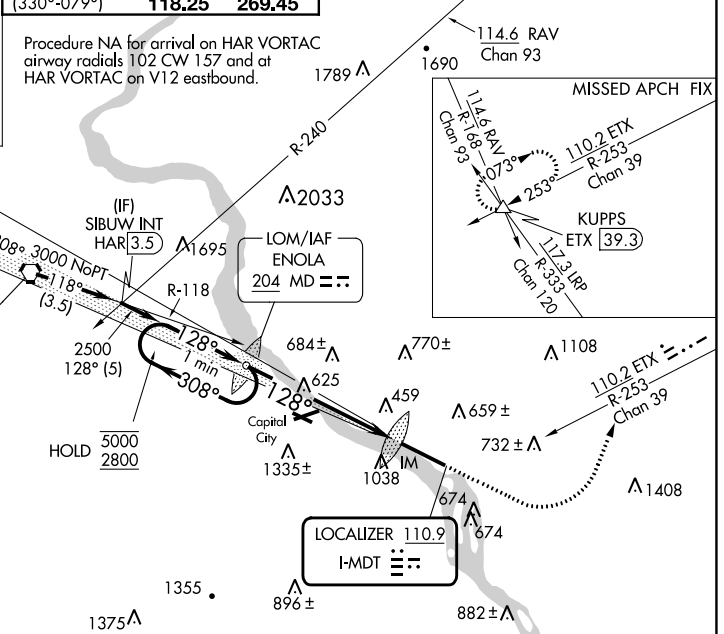
ALSIF-2 MISSED APPROACH: Climb to 900 then climbing left turn to 3000 on heading 070° and on ETX VOR/DME R-253 to KUPPS INT/ETX 39.3 DME and hold.

Circle NA south of Rwy 13-31. -17°C

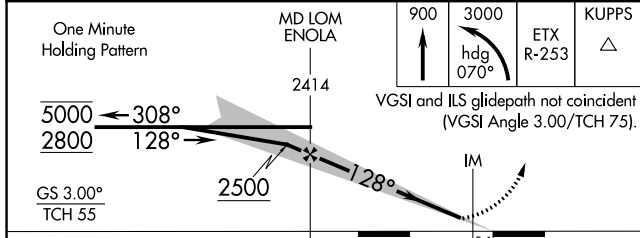
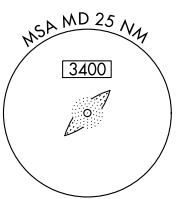
ATIS 118.8	HARRISBURG APP CON (080°-179°) 126.45 281.525 (180°-329°) 124.1 273.525 (330°-079°) 118.25 269.45	HARRISBURG INTL TOWER 124.8 269.35	GND CON 121.7 348.6
-----------------------------	--	---	--------------------------------------

ALTERNATE MISSED APCH FIX

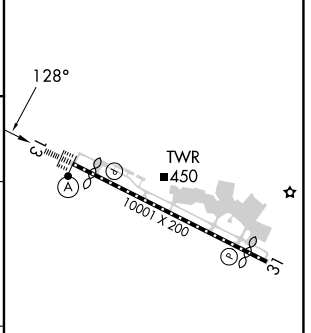
HARRISBURG HAR 115.35
Chan 100 (Y)



IAF HARRISBURG 115.35 HAR Chan 100 (Y)



ELEV 310	D	TDZE 308
----------	----------	----------



CATEGORY	A	B	C	D
S-ILS 13	508/18		200 (200-½)	
S-LOC 13	900/24	592 (600-½)	900-1¼	592 (600-1¼)
CIRCLING	900-1 590 (600-1)	980-1 670 (700-1)	1000-2 690 (700-2)	1420-3 1110 (1200-3)
FDZ/CL Rwy 13 REIL Rwy 31 HIRL Rwy 13-31				
FAF to MAP 6.4 NM				
Knots	60	90	120	150 180
Min:Sec	6:24	4:16	3:12	2:34 2:08

NE-4, 31 OCT 2024 to 28 NOV 2024

NE-4, 31 OCT 2024 to 28 NOV 2024