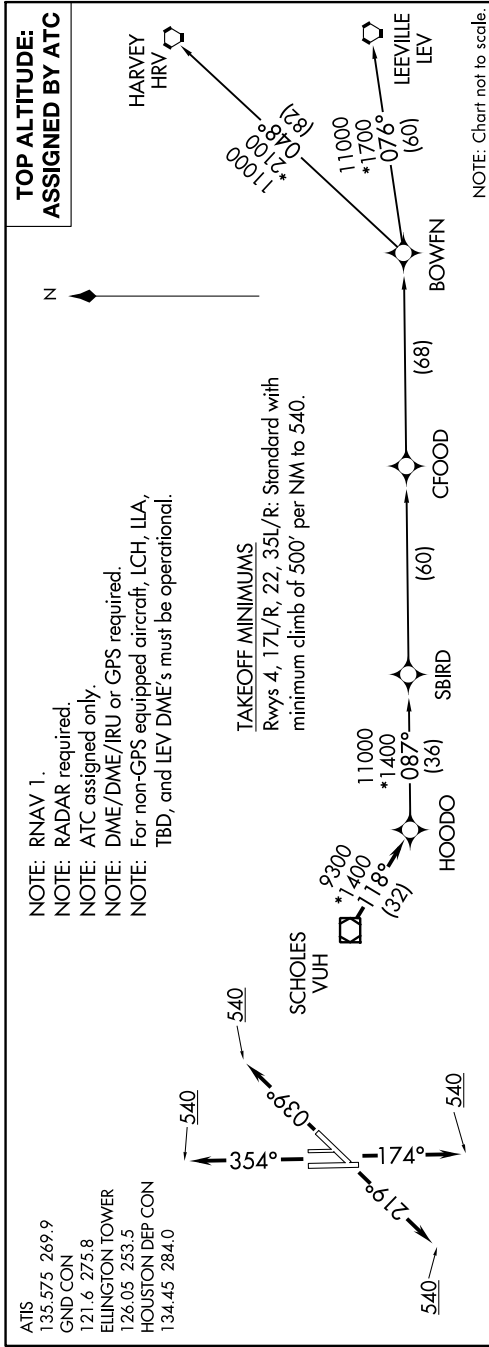


SC-5, 31 OCT 2024 to 28 NOV 2024



NOTE: Chart not to scale.

DEPARTURE ROUTE DESCRIPTION

- TAKEOFF RUNWAY 4:** Climb on heading 039° to 540, for RADAR vectors to VUH VOR/DME, thence
- TAKEOFF RUNWAYS 17L/R:** Climb on heading 174° to 540, for RADAR vectors to VUH VOR/DME, thence
- TAKEOFF RUNWAY 22:** Climb on heading 219° to 540, for RADAR vectors to VUH VOR/DME, thence
- TAKEOFF RUNWAYS 35L/R:** Climb on heading 354° to 540, for RADAR vectors to VUH VOR/DME, thence

. . . . on track 118° to HOODO, then on (transition). Maintain ATC assigned altitude.
 Expect filed altitude 10 minutes after departure.

- BOWFN TRANSITION (HOODO7.BOWFN)
- CFOOD TRANSITION (HOODO7.CFOOD)
- HARVEY TRANSITION (HOODO7.HRV)
- LEEVILLE TRANSITION (HOODO7.LEV)
- SBIRD TRANSITION (HOODO7.SBIRD)

SC-5, 31 OCT 2024 to 28 NOV 2024