

APP CRS	Rwy Idg	6005
177°	TDZE	966
	Apt Elev	966

RNAV (GPS) RWY 18

KIRKSVILLE RGNL (IRK)

RNP APCH.

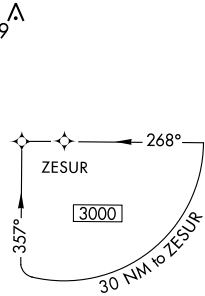
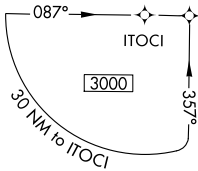
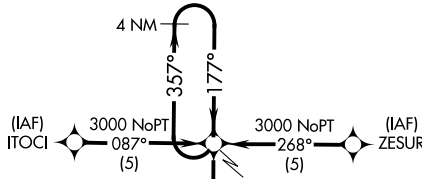
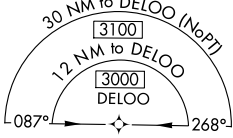
▼ Circling NA to Rws 9 and 27.
Rwy 18 helicopter visibility reduction below 3/4 SM NA.

MISSED APPROACH: Climb to 3000 direct HOROK and hold.

ASOS
121.125

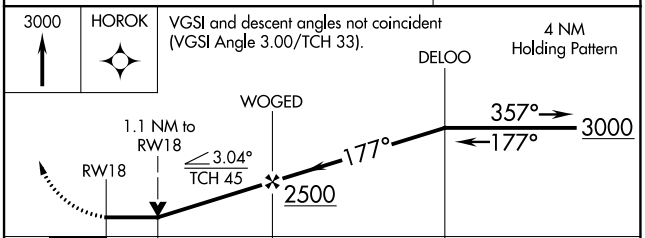
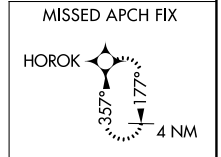
KANSAS CITY CENTER
132.6 370.9

UNICOM
122.8 (CTAF) 0



ELEV 966	D	TDZE 966
----------	----------	----------

REIL Rwy 18 **0**
HIRL Rwy 18-36 **0**



CATEGORY	A	B	C	D
LNAV MDA	1340-1 374 (400-1)			1340-1 1/4 374 (400-1 1/4)
CIRCLING	1400-1 434 (500-1)	1440-1 474 (500-1)	1460-1 1/2 494 (500-1 1/2)	1540-2 574 (600-2)

NC-3, 31 OCT 2024 to 28 NOV 2024

NC-3, 31 OCT 2024 to 28 NOV 2024