

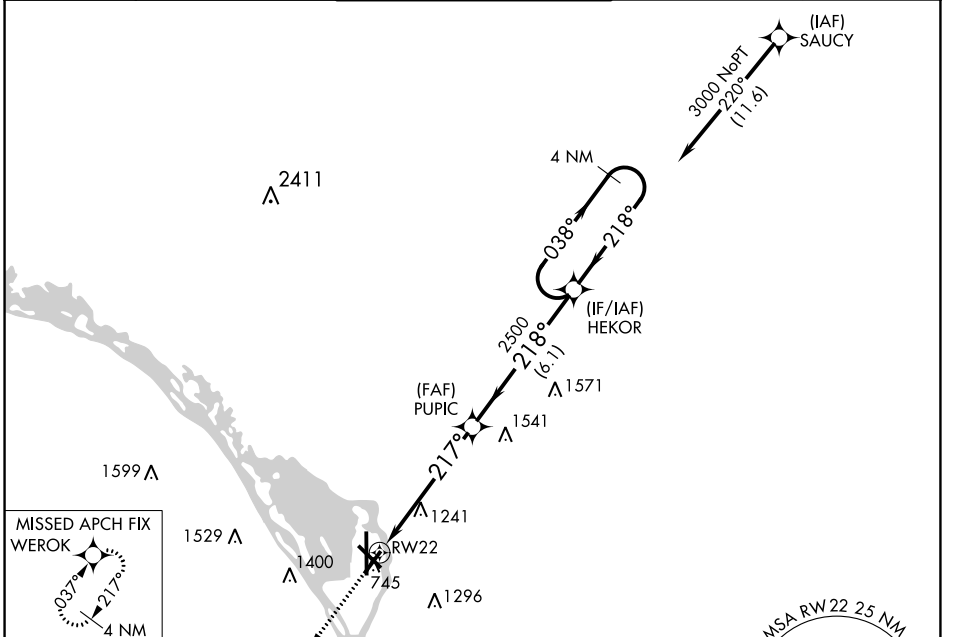
APP CRS <b>217°</b>	Rwy Idg <b>5199</b>
	TDZE <b>654</b>
	Apt Elev <b>656</b>

# RNAV (GPS) RWY 22

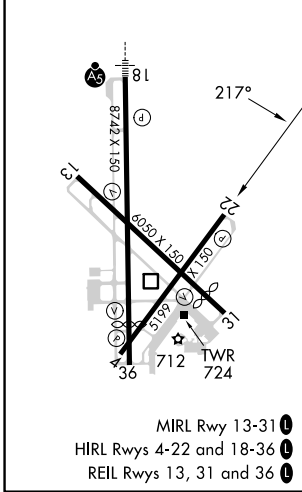
LA CROSSE RGNL (LSE)

RNP APCH.	When local altimeter setting not received, use Winona altimeter setting and increase all MDA 60 feet. Rwy 22 helicopter visibility reduction below 1 SM NA.	MISSED APPROACH: Climb to 3100 direct WEROK and hold.
-----------	---	---

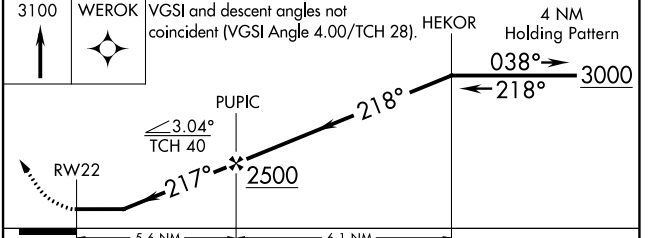
ATIS <b>124.95</b>	MINNEAPOLIS CENTER <b>128.6 363.0</b>	LA CROSSE TOWER ★ <b>118.45 (CTAF) 251.075</b>	GND CON <b>121.8</b>	UNICOM <b>122.95</b>
-----------------------	--	---	-------------------------	-------------------------



ELEV 656	<b>D</b>	TDZE 654
----------	----------	----------



3100	WEROK	VGSI and descent angles not coincident (VGSI Angle 4.00/TCH 28).	HEKOR	4 NM Holding Pattern
------	-------	--	-------	----------------------



CATEGORY	A	B	C	D
LNAV MDA	1820-1/4 1166 (1200-1/4)	1820-1/2 1166 (1200-1/2)	1820-3	1166 (1200-3)
<b>C</b> CIRCLING	1820-1/4 1164 (1200-1/4)	1820-1/2 1164 (1200-1/2)	1820-3	1164 (1200-3)

EC-3, 31 OCT 2024 to 28 NOV 2024

EC-3, 31 OCT 2024 to 28 NOV 2024