

WAAS CH 70611 W04B	APP CRS 046°	Rwy Idg 7200 TDZE 260 Apt Elev 266
---------------------------------	------------------------	---

RNAV (GPS) RWY 4R

BILL AND HILLARY CLINTON NTL/ADAMS FLD (LIT)

RNP APCH-GPS.

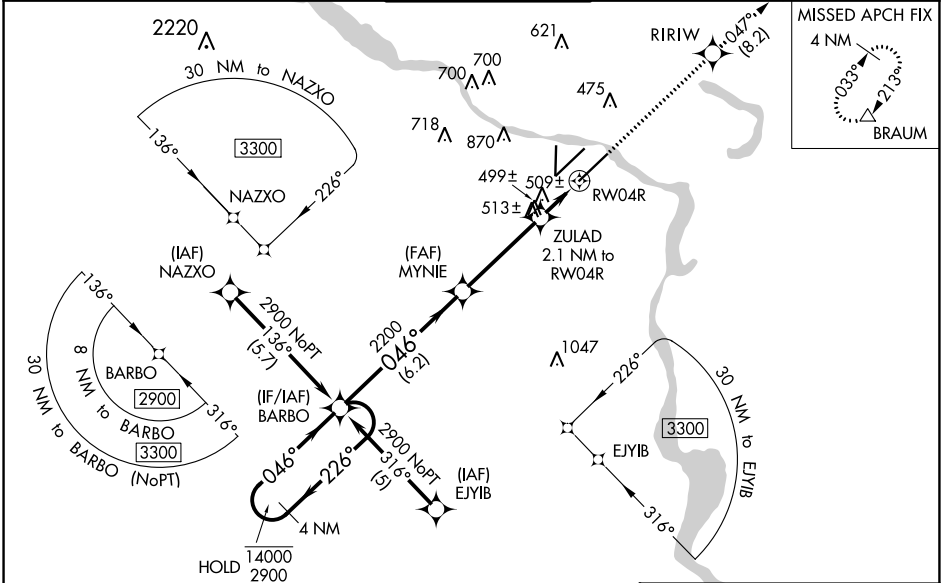
⚠ Rwy 4R helicopter visibility reduction below RVR 4000 NA. For uncompensated Baro-VNAV systems, LNAV/VNAV NA below -15°C or above 54°C. Simultaneous approach authorized. LNAV procedure NA during simultaneous operations. Use of FD or AP required during simultaneous operations. For inop ALS, increase LPV all Cats visibility to RVR 4500, LNAV/VNAV all Cats visibility to 1½ SM and LNAV Cat A/B visibility to RVR 5500 and Cat C/D to 1½ SM.

MALSR



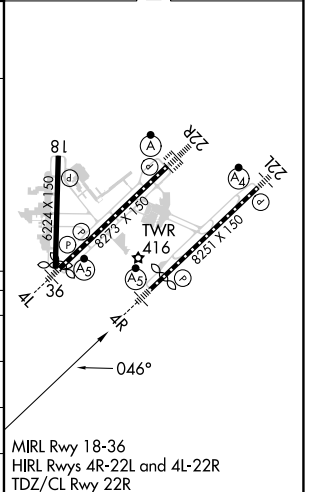
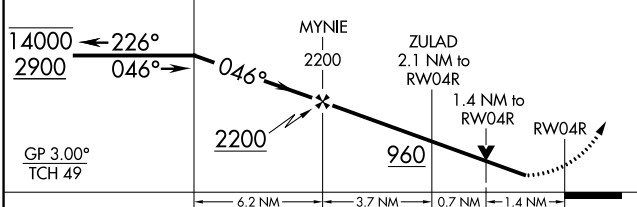
MISSED APPROACH:
Climb to 2900 direct RIRIW and on track 047° to BRAUM and hold.

D-ATIS 125.65	LITTLE ROCK APP CON 135.4 353.6	ADAMS TOWER 118.7 257.8	GND CON 121.9 339.8	CLNC DEL 118.95
-------------------------	---	-----------------------------------	-------------------------------	---------------------------



ELEV 266	D TDZE 260
----------	-------------------

4 NM Holding Pattern BARBO	2900	RIRIW	tr 047°	BRAUM
----------------------------	------	-------	---------	-------



CATEGORY	A	B	C	D
LPV DA		574/40	314 (400-¾)	
LNAV/VNAV DA		756/50	496 (500-1)	
LNAV MDA	760/40	500 (500-¾)	760/50	500 (500-1)
C CIRCLING	820-1 554 (600-1)	1000-1 734 (800-1)	1180-2¾ 914 (1000-2¾)	1180-3 914 (1000-3)

SC-1, 31 OCT 2024 to 28 NOV 2024

SC-1, 31 OCT 2024 to 28 NOV 2024