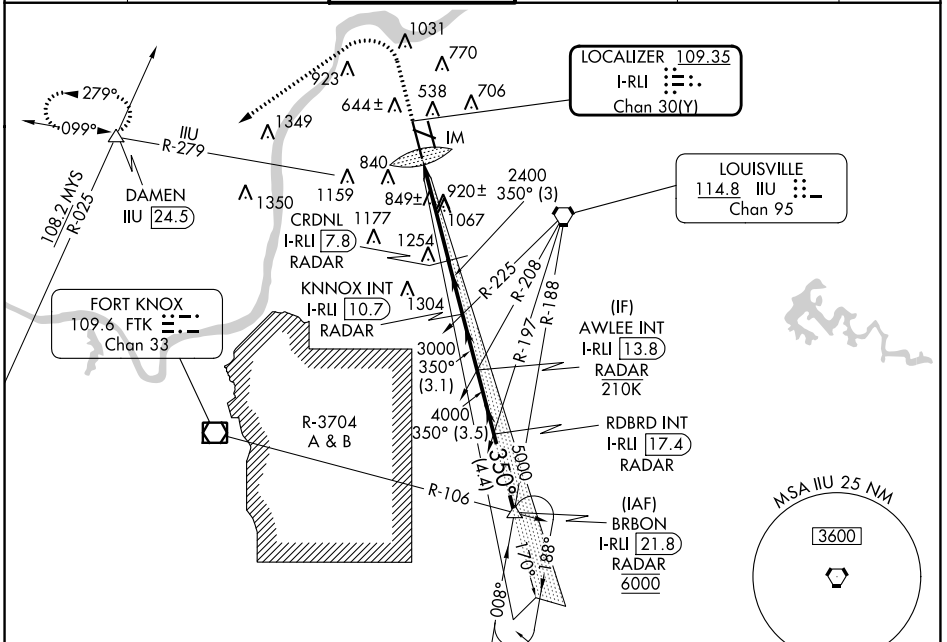


LOC/DME I-RLI 109.35 Chan 30(Y)	APP CRS 350°	Rwy Idg TDZE 464 Apt Elev 501
---	------------------------	---

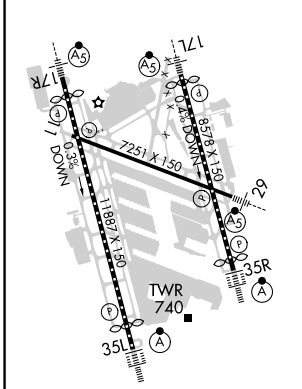
ILS RWY 35L (SA CAT I)

LOUISVILLE MUHAMMAD ALI INTL (SDF)

RADAR required.		ALSIF-2	MISSED APPROACH: Climb to 1000 then climbing left turn to 4000 on heading 240° and IJU VORTAC R-279 to DAMEN INT/ IJU 24.5 DME and hold.		
<p>Simultaneous approach authorized. Requires specific OPSPEC, MSPEC, or LOA approval.</p>		<p>(A) </p>			
D-ATIS 118.725	LOUISVILLE APP CON 132.075 327.0	LOUISVILLE TOWER 124.2 257.8	GND CON 121.7 348.6	CLNC DEL 126.1 275.8	CPDLC



ELEV 501	D	TDZE 464
----------	----------	----------



HIRL all Rwys
TDZ/CL Rwys 17L, 17R, 35L, and 35R

1450	1000	4000	DAMEN IJU R-279	AWLEE INT I-RLI 13.8
Arrival holding not required at BRBRON on V5-513 northbound.		VGS1 and ILS glidepath not coincident (VGS1 Angle 3.00/TCH 75).		
CRDNL I-RLI 7.8 RADAR		KNOX INT I-RLI 10.7 RADAR		
IM		RADAR		
2400		3000		
2400		350° 4000		
1120		5.9 NM 3 NM 3.1 NM		
CATEGORY	A	B	C	D
S-ILS 35L	RA 154/14 150 DA 614			
SA CATEGORY I ILS - SPECIAL AIRCREW & AIRCRAFT CERTIFICATION REQUIRED				

ILS RWY 35L (SA CAT I)

SE-1, 31 OCT 2024 to 28 NOV 2024

SE-1, 31 OCT 2024 to 28 NOV 2024