

# AIRPORT DIAGRAM

AL-241 (FAA)

ATIS  
125.3 270.275  
LUBBOCK TOWER  
120.5 239.3  
GND CON  
121.9 348.6  
CLNC DEL  
125.8 281.55

**D**

FIELD  
ELEV  
3282

173.8°  
0.4% DOWN

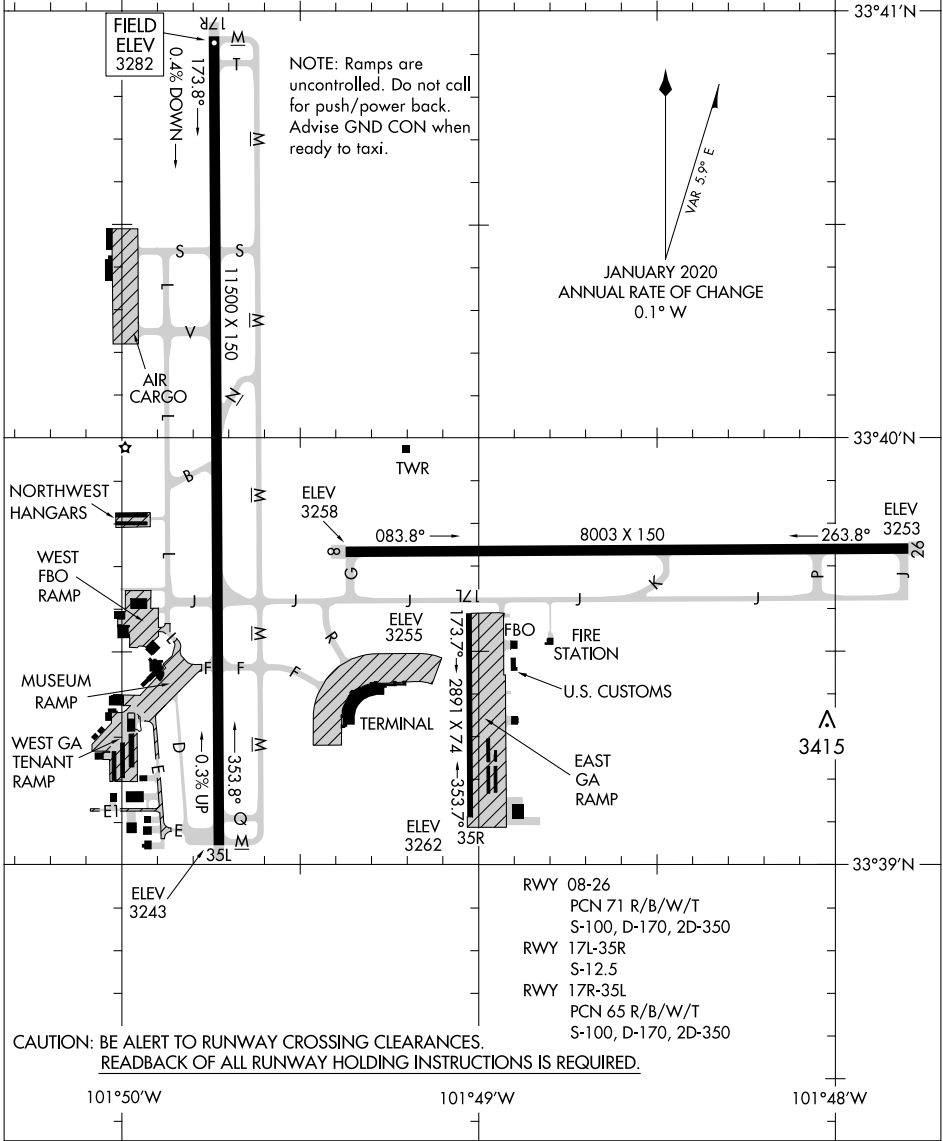
NOTE: Ramps are uncontrolled. Do not call for push/power back. Advise GND CON when ready to taxi.



JANUARY 2020  
ANNUAL RATE OF CHANGE  
0.1° W

SC-2, 31 OCT 2024 to 28 NOV 2024

SC-2, 31 OCT 2024 to 28 NOV 2024



CAUTION: BE ALERT TO RUNWAY CROSSING CLEARANCES.  
READEBACK OF ALL RUNWAY HOLDING INSTRUCTIONS IS REQUIRED.

RWY 08-26  
PCN 71 R/B/W/T  
S-100, D-170, 2D-350  
RWY 17L-35R  
S-12.5  
RWY 17R-35L  
PCN 65 R/B/W/T  
S-100, D-170, 2D-350

101°50'W

101°49'W

101°48'W

# AIRPORT DIAGRAM