

LUBBOCK, TEXAS

HI-ILS or LOC RWY 17R

LOC I-LBB 111.7 Chan 54	APCH CRS 174°	Rwy Ildg 11 500 TDZE 3282 Arprt Elev 3282
---	-------------------------	--

AL-241 [USAF]

LUBBOCK PRESTON SMITH INTL (KLBB)

DME or RADAR required.

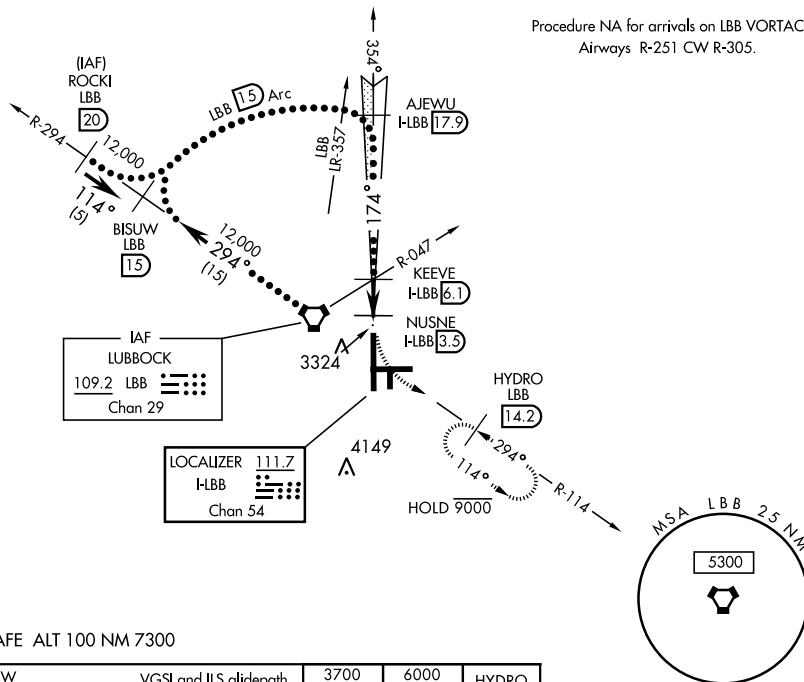


MISSED APPROACH: Climb to 3700, then climbing left turn to 6000 via LBB VORTAC R-114 to HYDRO (LBB 14.2 DME) and hold, continue climb in hold to 6000.

- ▼ * When ALS inop, increase CAT E RVR to 40.
- ▲ ** When ALS inop, increase CAT CDE vis to 1 3/8 mile.
- ▲ *** When ALS inop, increase CAT CDE RVR to 50.

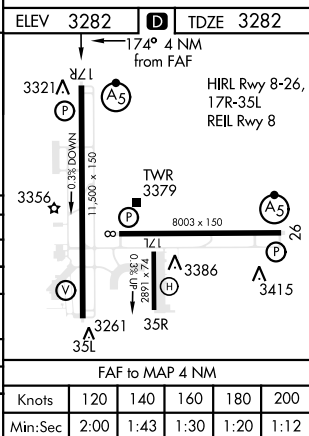
ATIS 125.3 270.275	APP CON 119.2 351.8	TOWER 120.5 239.3	GND CON 121.9 348.6	CLNC DEL 125.8 281.55
------------------------------	-------------------------------	-----------------------------	-------------------------------	---------------------------------

Procedure NA for arrivals on LBB VORTAC
Airways R-251 CW R-305.



EMERG SAFE ALT 100 NM 7300

BISUW LBB 15	AJEWU H-LBB 17.9	VGSI and ILS glidepath not coincident (VGSI angle 3.0/TCH 69).	3700	6000	HYDRO LBB 14.2
12,000	174°	6000	4600	4600	4600
GS 3.00°	TCH 53	LBB Arc	2.6 NM	0.5	0.9 NM
CATEGORY	C	D	E		
S-ILS 17R *	3482/24		200 (200-1/2)		
S-LOC 17R **	3780/50		498 (500-1)		
CIRCLING	3880-1 1/2 598 (600-1 1/2)	3940-2 658 (700-2)	4100-3 818 (900-3)		
NUSNE DME FIX MINIMUMS					
S-LOC 17R ***	3620/26		338 (400-3/4)		
CIRCLING	3880-1 1/2 598 (600-1 1/2)	3940-2 658 (700-2)	4100-3 818 (900-3)		



LUBBOCK, TEXAS
Amdt 2 02FEB17

33°40'N-101°49'W

LUBBOCK PRESTON SMITH INTL (KLBB)

HI-ILS or LOC RWY 17R

SC-2, 31 OCT 2024 to 28 NOV 2024

SC-2, 31 OCT 2024 to 28 NOV 2024