

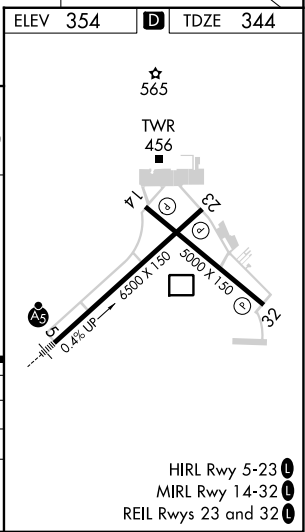
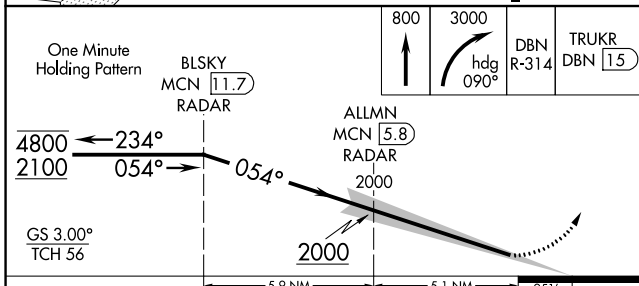
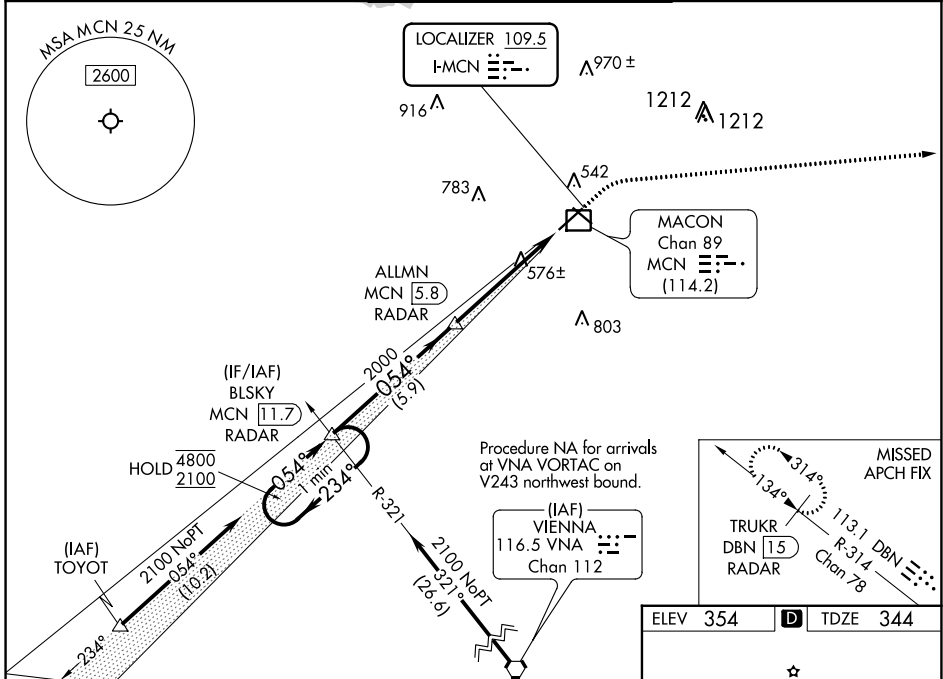
LOC I-MCN	APP CRS	Rwy Idg	6221
109.5	054°	TDZE	344
		Apt Elev	354

ILS RWY 5 (SA CAT I & II)
MIDDLE GEORGIA RGNL (MCN)

DME and RADAR required.

MALS MISSED APPROACH: Climb to 800 then climbing right turn to 3000 on heading 090° and DBN VORTAC R-314 to TRUKR/DBN VORTAC 15 DME/RADAR and hold.

ATIS	ATLANTA APP CON *	MACON TOWER *	GND CON	UNICOM
120.775	124.2 279.6	128.2 (CTAF) 257.8	121.65	122.95



CATEGORY	A	B	C	D
S-ILS 5	SA CAT I	RA 216/14	150 DA 494	
S-ILS 5	SA CAT II	RA 151/12	100 DA 444	

SA CATEGORY I & II ILS - SPECIAL AIRCREW & AIRCRAFT CERTIFICATION REQUIRED

SE-4, 31 OCT 2024 to 28 NOV 2024

SE-4, 31 OCT 2024 to 28 NOV 2024