

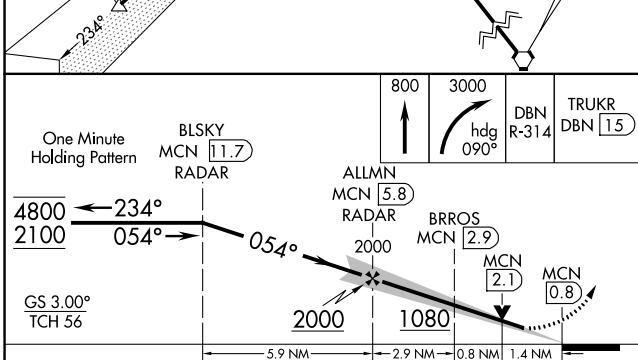
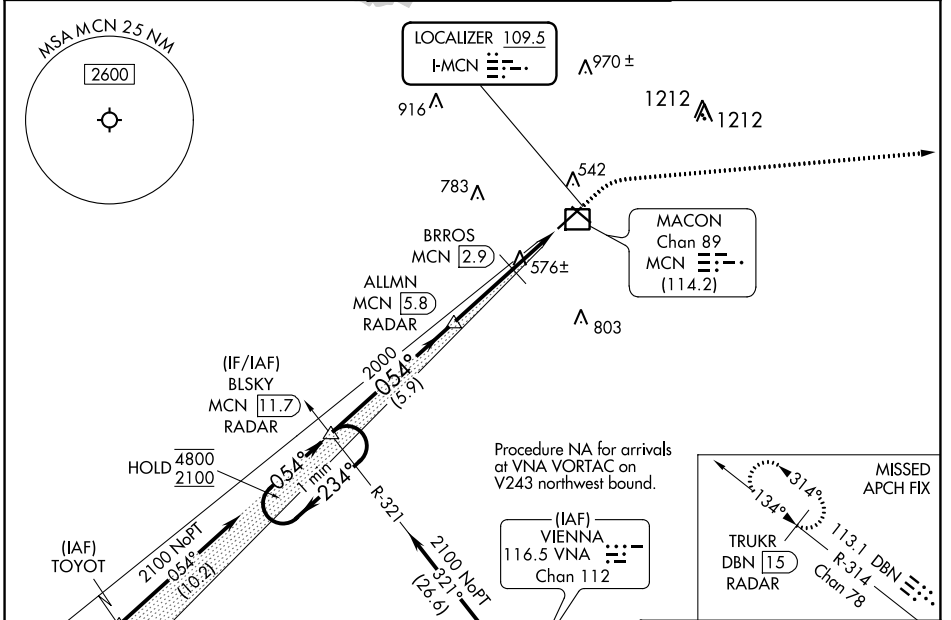
LOC I-MCN <b>109.5</b>	APP CRS <b>054°</b>	Rwy Idg TDZE Apt Elev	<b>6221</b> <b>344</b> <b>354</b>
---------------------------	------------------------	-----------------------------	---

# ILS or LOC RWY 5

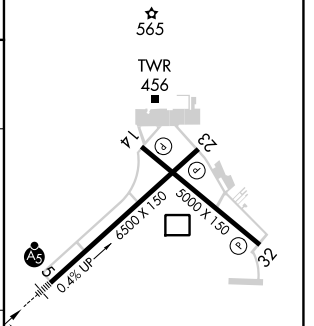
MIDDLE GEORGIA RGNL (MCN)

DME and RADAR required.	MALSR 	MISSED APPROACH: Climb to 800 then climbing right turn to 3000 on heading 090° and DBN VORTAC R-314 to TRUKR/DBN VORTAC 15 DME/RADAR and hold.
<p><b>⚠</b> DME from MCN VORTAC. Simultaneous reception of I-MCN and MCN DME required. For inop ALS, increase S-ILS 5 Cat E visibility to RVR 4000 and S-LOC 5 Cats C, D, and E visibilities to 1 3/8 SM. * RVR 1800 authorized with use of FD or AP or HUD to DA.</p>		

ATIS <b>120.775</b>	ATLANTA APP CON * <b>124.2 279.6</b>	MACON TOWER * <b>128.2 (CTAF) 257.8</b>	GND CON <b>121.65</b>	UNICOM <b>122.95</b>
------------------------	---	--	--------------------------	-------------------------



ELEV 354	<b>D</b>	TDZE 344
----------	----------	----------



CATEGORY	A	B	C	D	E
S-ILS 5 *	544/24 200 (200-1/2)				
S-LOC 5	840/24	496 (500-1/2)	840/50		496 (500-1)
<b>C</b> CIRCLING	900-1	546 (600-1)	920-1 1/2	1120-2 1/2	1180-3
			566 (600-1 1/2)	766 (800-2 1/2)	826 (900-3)

HIRL Rwy 5-23

MIRL Rwy 14-32

REIL Rws 23 and 32

SE-4, 31 OCT 2024 to 28 NOV 2024

SE-4, 31 OCT 2024 to 28 NOV 2024