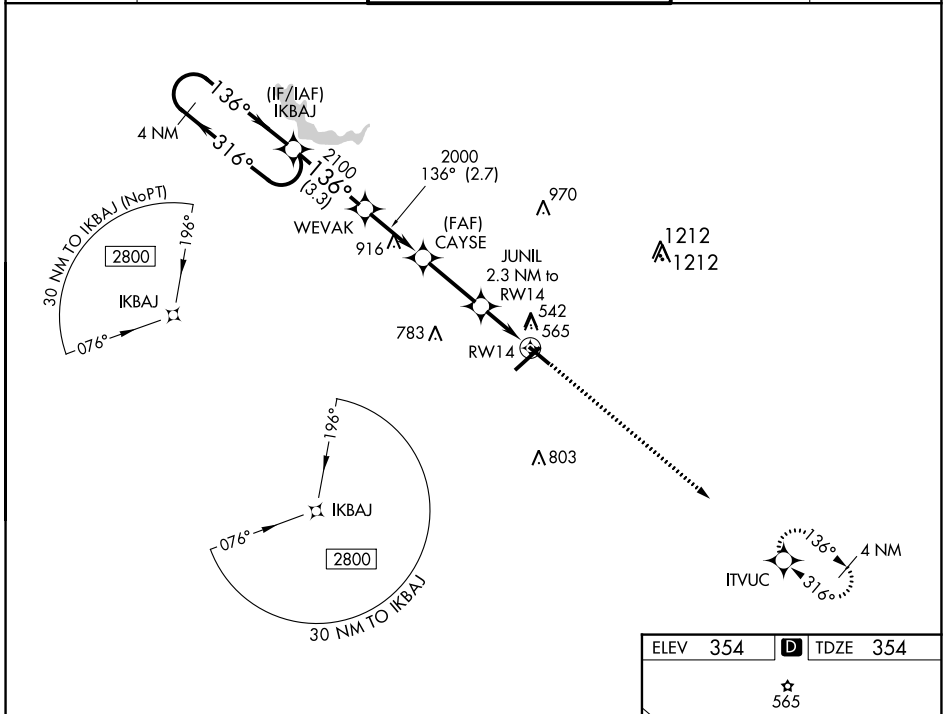


WAAS CH <b>90322</b> W14A	APP CRS <b>136°</b>	Rwy Idg <b>5000</b> TDZE <b>354</b> Apt Elev <b>354</b>
---------------------------------	------------------------	---

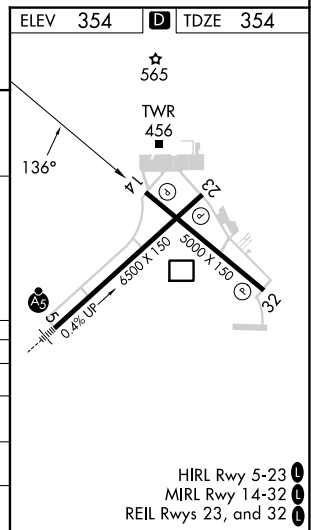
# RNAV (GPS) RWY 14

MIDDLE GEORGIA RGNL (MCN)

RNP APCH-GPS.		MISSED APPROACH: Climb to 2600 direct ITVUC and hold.		
<p><b>▽</b> For uncompensated Baro-VNAV systems, LNAV/VNAV NA below -8°C or above 54°C. Rwy 14 helicopter visibility reduction below 3/4 SM NA.</p>				
ATIS <b>120.775</b>	ATLANTA APP CON ★ <b>124.2 279.6</b>	MACON TOWER ★ <b>128.2 (CTAF) 257.8</b>	GND CON <b>121.65</b>	UNICOM <b>122.95</b>



4 NM Holding Pattern	IKBAJ	WEVAK	CAYSE	JUNIL 2.3 NM to RWY14	2600	ITVUC
2800 ← 316°	→ 136°	2100	2000	1.3 NM to RWY14		
GP 3.00° TCH 55		2000	1140			
	← 3.3 NM	← 2.7 NM	← 2.7 NM	← 1.0	← 1.3	
CATEGORY	A	B	C	D		
LPV DA		652-1	298 (300-1)			
LNAV/VNAV DA		745-1¼	391 (400-1¼)			
LNAV MDA	820-1	466 (500-1)	820-1¾	466 (500-1¾)		
CIRCLING	900-1	546 (600-1)	920-1½	1120-2½	566 (600-1½)	766 (800-2½)



SE-4, 31 OCT 2024 to 28 NOV 2024

SE-4, 31 OCT 2024 to 28 NOV 2024