

ROZZE TWO ARRIVAL (RNAV)

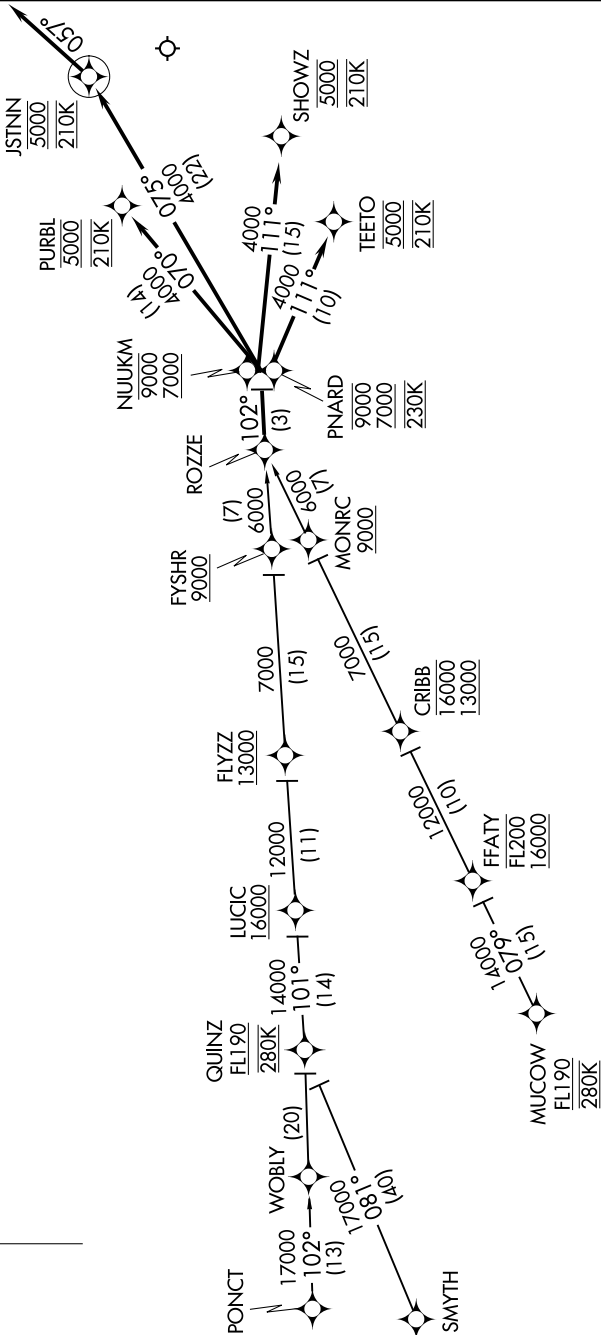
AL-246 (FAA)

MANCHESTER BOSTON RGNL (MHT)

MANCHESTER, NEW HAMPSHIRE

BOSTON CENTER
135.32 360.6
BOSTON APP CON
124.9 269.075
ATIS
119.55
MANCHESTER TOWER
121.3 239.025

NOTE: RADAR required.
NOTE: RNAV 1.
NOTE: DME/DME/IRU or GPS required.
NOTE: Turbopjet aircraft only.
NOTE: MUCOW and CRIBB transitions are ATC assigned.



(NARRATIVE ON FOLLOWING PAGE)

NOTE: Chart not to scale.

ROZZE TWO ARRIVAL (RNAV)

MANCHESTER, NEW HAMPSHIRE

MANCHESTER BOSTON RGNL (MHT)