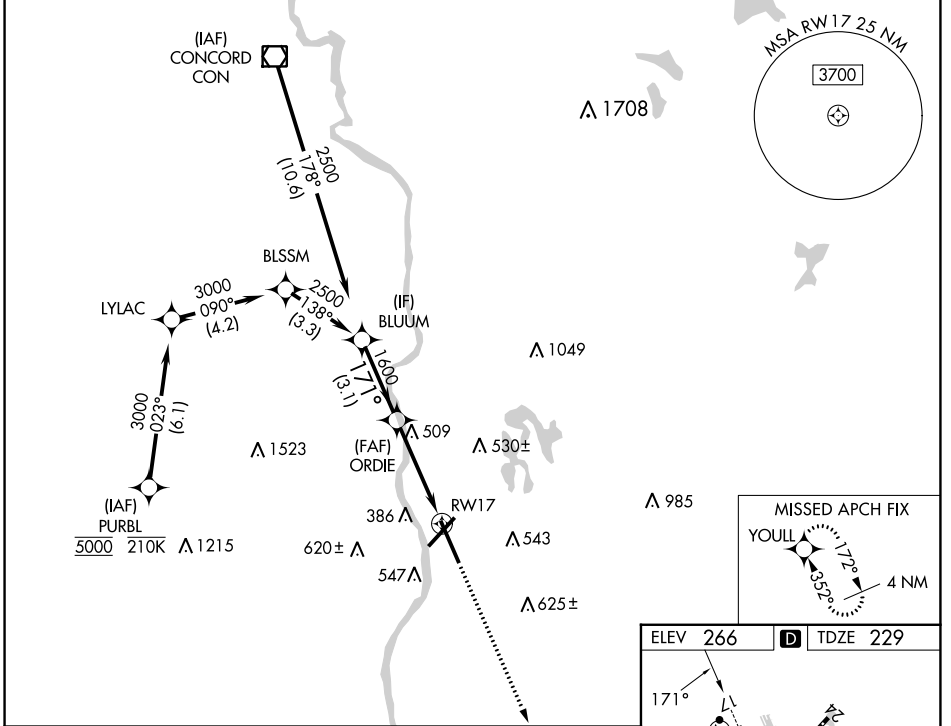


WAAS CH 93807	APP CRS 171°	Rwy Idg 8914 TDZE 229 Apt Elev 266
W17A		

RNAV (GPS) Y RWY 17

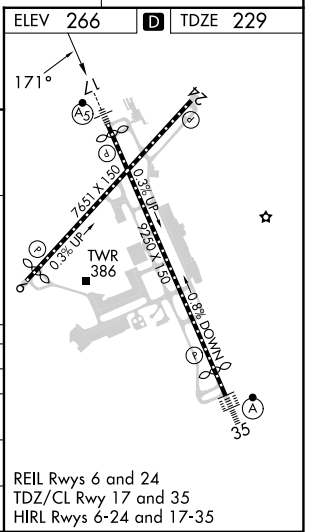
MANCHESTER BOSTON RGNL (MHT)

RNP APCH-GPS.		MALSR		MISSED APPROACH: Climb to 2000 direct YOULL and hold.	
<p>▼ For uncompensated Baro-VNAV systems, LNAV/VNAV NA below -19°C or above 54°C. ▲ For inop ALS, increase LNAV CAT A/B visibility to RVR 5500.</p>					
ATIS 119.55	BOSTON APP CON 124.9 269.075	MANCHESTER TOWER 121.3 239.025		GND CON 121.9	CLNC DEL 135.9



VGSI and RNAV glidepath not coincident (VGSI Angle 3.10/TCH 67).

BLUUM	2500	171°	1600	1.4 NM to RWY 17	2000	YOULL
ORDIE						
GP 3.10°						
TCH 49						
	3.1 NM		2.7 NM		1.4 NM	
CATEGORY	A	B	C	D		
LPV DA	429/18		200 (200-½)			
LNAV/VNAV DA	760/55		531 (500-1)			
LNAV MDA	760/24 531 (500-½)		760/55 531 (500-1)			
CIRCLING	880-1 614 (700-1)		980-2 714 (800-2)		1100-2¾ 834 (900-2¾)	



NE-1, 31 OCT 2024 to 28 NOV 2024

NE-1, 31 OCT 2024 to 28 NOV 2024