

TOP ALTITUDE:  
3000

POTOMAC DEP CON  
126.825 239.025  
ASOS  
119.925  
CLINC DEL  
121.8 257.65  
132.075 269.075 (When twr closed)  
GND CON  
121.8 257.65  
MARTINSBURG TOWER \*  
124.3 (CTAF) 233.7

- NOTE: RNAV 1.
- NOTE: RADAR required.
- NOTE: DME/DME/IRU or GPS required.
- NOTE: Turbo-jets only.
- NOTE: Takeoff Rwy 8: If issued an ATC heading that requires a westbound turn, climb heading 081° to 1200 prior to turning for obstacle avoidance.
- NOTE: Takeoff Rwy 26: If issued an ATC heading that requires a right turn, climb heading 261° to 2400 prior to turning for obstacle avoidance.

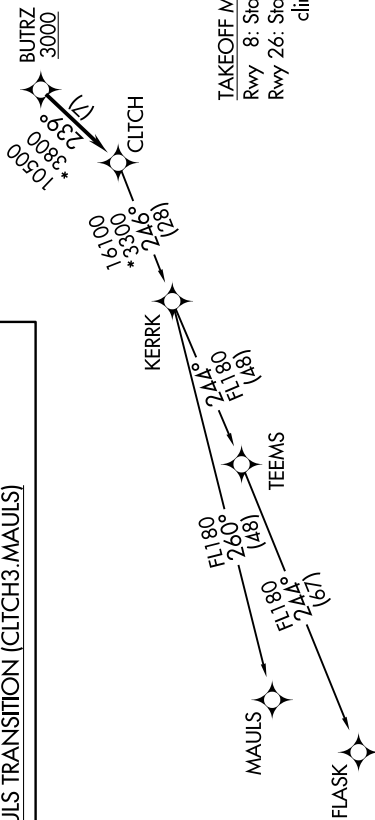


**▼ DEPARTURE ROUTE DESCRIPTION**

Climb on heading assigned by ATC, expect RADAR vectors to BUTRZ, then on track 239° to CLTCH, thence. . . .

. . . on assigned transition, maintain altitude assigned by ATC, expect clearance to filed altitude within ten (10) minutes after departure.

FLASK TRANSITION [CLTCH3.FLASK]  
MAULS TRANSITION [CLTCH3.MAULS]



TAKEOFF MINIMUMS  
Rwy 8: Standard.  
Rwy 26: Standard with a minimum climb of 225' per NM to 2100.

NOTE: Chart not to scale.