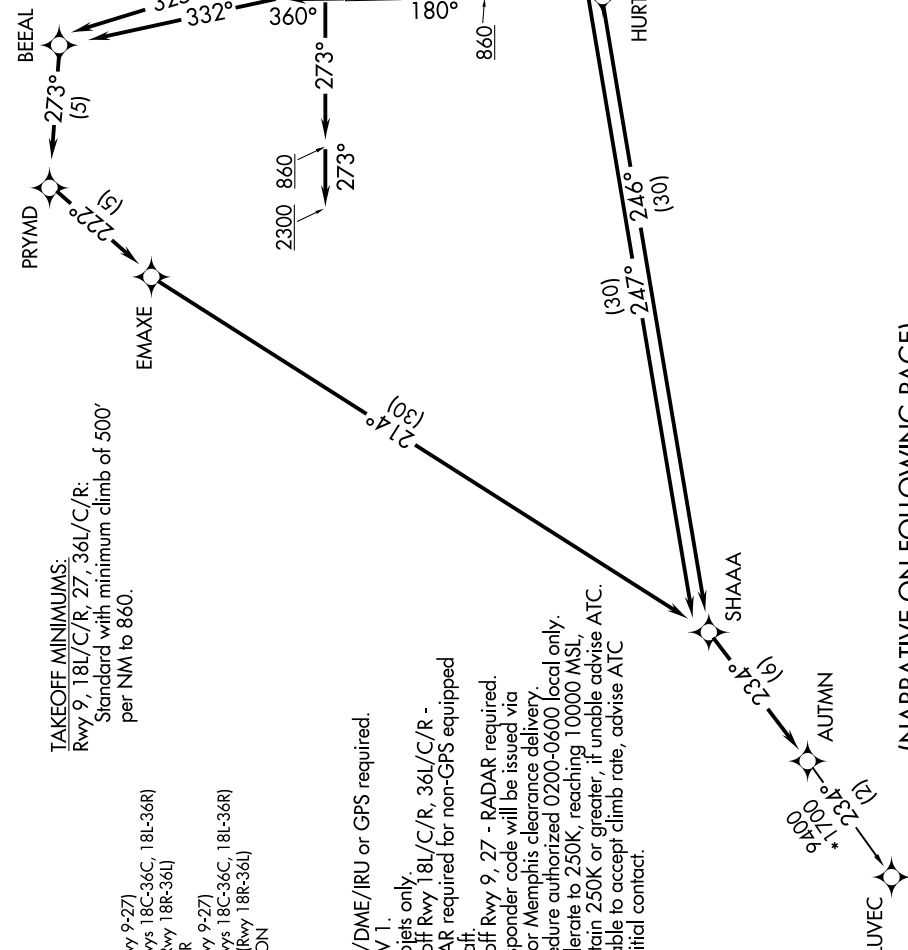


AUTMN SIX DEPARTURE (RNAV)

**TOP ALTITUDE:
5000**



TAKEOFF MINIMUMS:
 Rwy 9, 18L/C/R, 27, 36L/C/R:
 Standard with minimum climb of 500'
 per NM to 860.

- D-ATIS 127.75
- CLNC DEL 125.2
- CPDIC 125.2
- GND CON 121.0 379.2 (Rwy 9-27)
- 121.9 379.2 (Rwys 18C-36C, 18L-36R)
- 121.65 379.2 (Rwy 18R-36L)
- MEMPHIS TOWER 118.3 257.8 (Rwy 9-27)
- 119.7 257.8 (Rwys 18C-36C, 18L-36R)
- 128.425 257.8 (Rwy 18R-36L)
- MEMPHIS DEP CON 124.65 284.7

NOTE: DME/DME/IRU or GPS required.

NOTE: RNAV 1.

NOTE: Turbojets only.

NOTE: Takeoff Rwy 18L/C/R, 36L/C/R -

NOTE: RADAR required for non-GPS equipped aircraft.

NOTE: Takeoff Rwy 9, 27 - RADAR required.

NOTE: Transponder code will be issued via

PDC or Memphis clearance delivery.

NOTE: Procedure authorized 0200-0600 local only.

NOTE: Accelerate to 250K, reaching 10000 MSL,

maintain 250K or greater, if unable advise ATC.

NOTE: If unable to accept climb rate, advise ATC

on initial contact.

NOTE: Chart not to scale.

(NARRATIVE ON FOLLOWING PAGE)

AUTMN SIX DEPARTURE (RNAV)