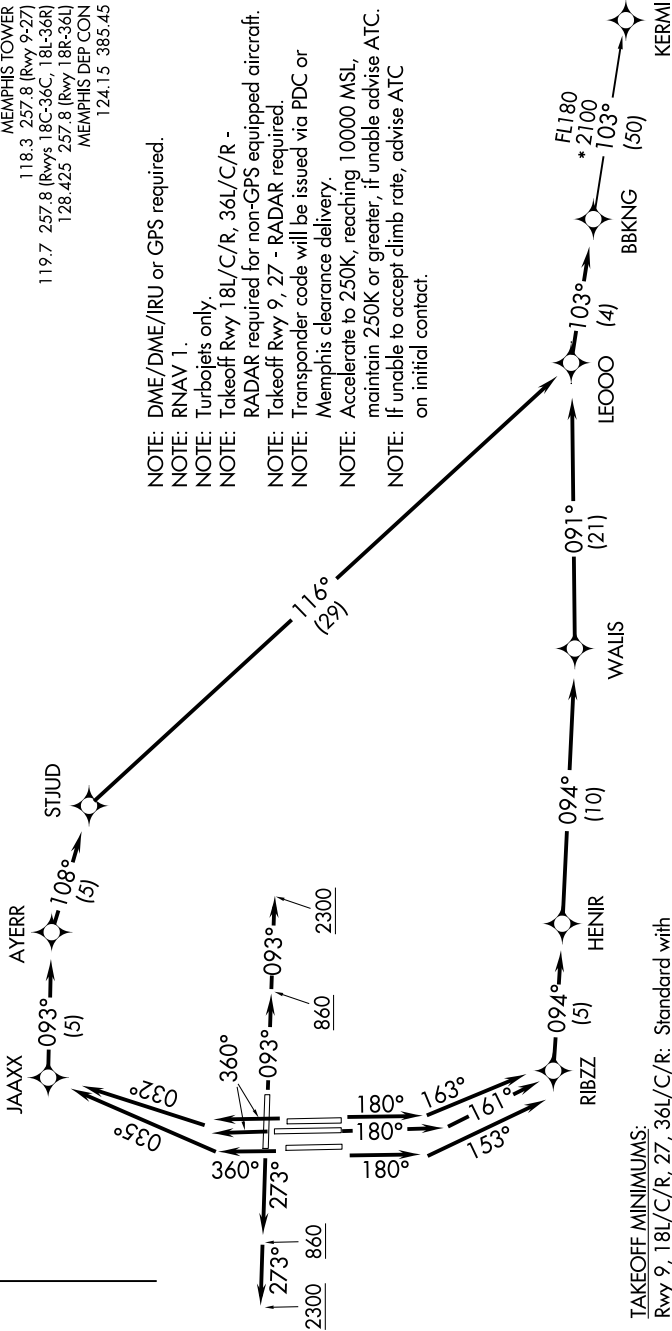
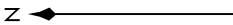


BBKNG SEVEN DEPARTURE (RNAV)

SE-1, 31 OCT 2024 to 28 NOV 2024

TOP ALTITUDE:
5000



D-ATIS 127.75
 CLNC DEL 125.2
 CPDLC
 GND CON
 121.0 379.2 (Rwy 9-27)
 121.9 379.2 (Rwys 18C-36C, 18L-36R)
 121.65 379.2 (Rwy 18R-36L)
 MEMPHIS TOWER
 118.3 257.8 (Rwy 9-27)
 119.7 257.8 (Rwys 18C-36C, 18L-36R)
 128.425 257.8 (Rwy 18R-36L)
 MEMPHIS DEP CON
 124.15 385.45

NOTE: DME/DME/IRU or GPS required.
 NOTE: RNAV 1.
 NOTE: Turbojets only.
 NOTE: Takeoff Rwy 18L/C/R, 36L/C/R -
 RADAR required for non-GPS equipped aircraft.
 NOTE: Takeoff Rwy 9, 27 - RADAR required.
 NOTE: Transponder code will be issued via PDC or
 Memphis clearance delivery.
 NOTE: Accelerate to 250K, reaching 10000 MSL,
 maintain 250K or greater, if unable advise ATC.
 NOTE: If unable to accept climb rate, advise ATC
 on initial contact.

TAKEOFF MINIMUMS:
 Rwy 9, 18L/C/R, 27, 36L/C/R: Standard with
 minimum climb of 500' per NM to 860.
 NOTE: Chart not to scale.

(NARRATIVE ON FOLLOWING PAGE)

SE-1, 31 OCT 2024 to 28 NOV 2024

BBKNG SEVEN DEPARTURE (RNAV)