

CONDR FOUR ARRIVAL (RNAV)

SE-1, 31 OCT 2024 to 28 NOV 2024

RNAV 1 - DME/DME/IRU or GPS.

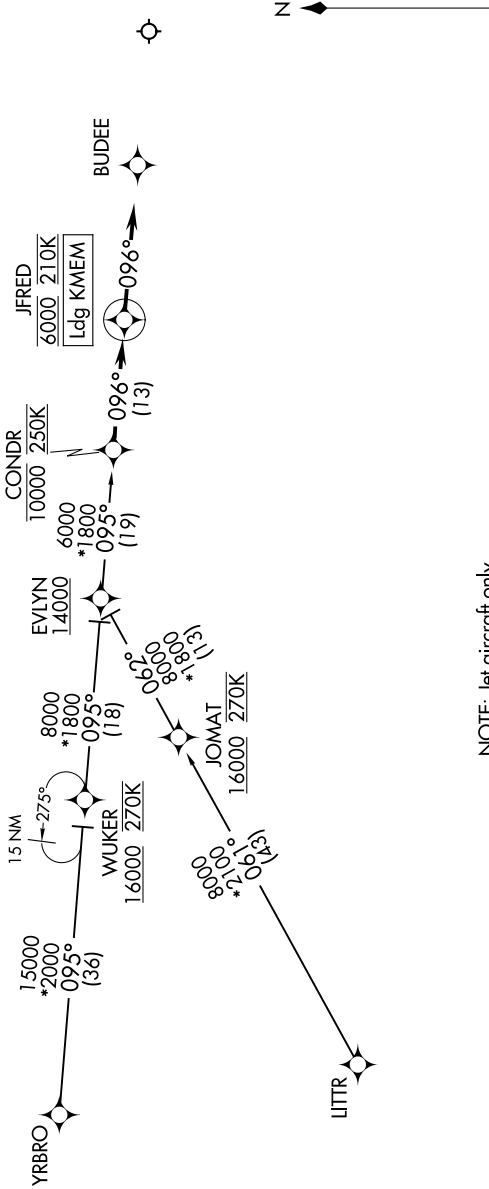
RADAR required.

MEMPHIS APP CON
119.1 291.6 (176°-355°)
125.8 338.3 (356°-175°)
D-ATIS
127.75

ARRIVAL ROUTE DESCRIPTION

EVLYN TRANSITION (EVLYN.CONDR4):
LITTR TRANSITION (LITTR.CONDR4):
YRBRO TRANSITION (YRBRO.CONDR4):

From CONDR on track 096° to cross JFRED at 6000 and at 210K, then on track 096°. Expect RADAR vectors to final approach course.



NOTE: Jet aircraft only.
NOTE: Do not file - to be assigned by ATC.

NOTE: Chart not to scale.

SE-1, 31 OCT 2024 to 28 NOV 2024