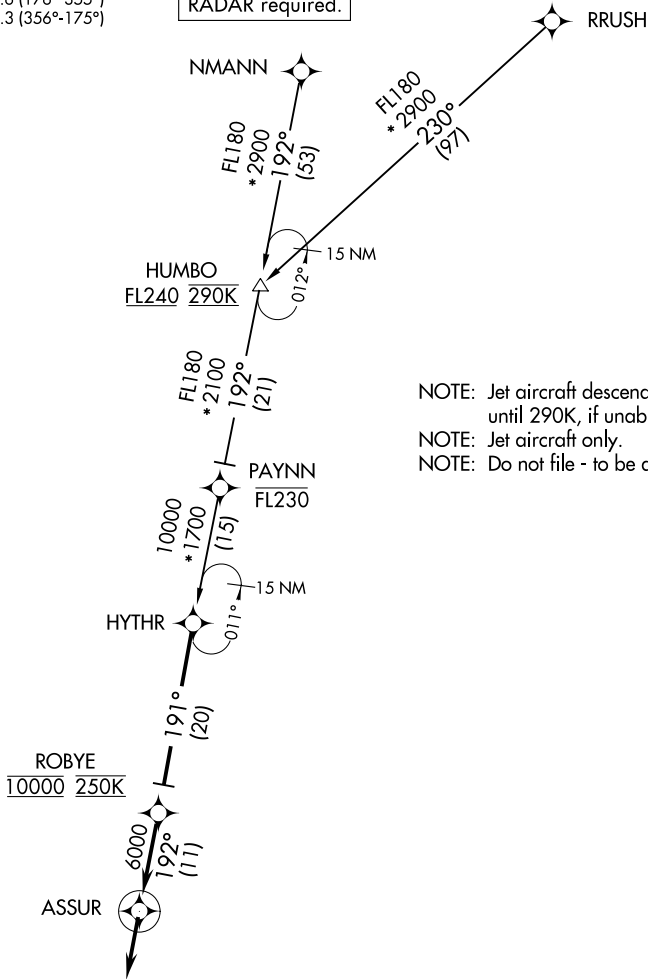


# HYTHR THREE ARRIVAL (RNAV)

MEMPHIS APP CON  
119.1 291.6 (176°-355°)  
125.8 338.3 (356°-175°)  
D-ATIS  
127.75

RNAV 1 - DME/DME/IRU or GPS.

RADAR required.



NOTE: Jet aircraft descend via Mach number until 290K, if unable, advise ATC.  
 NOTE: Jet aircraft only.  
 NOTE: Do not file - to be assigned by ATC.

NOTE: Chart not to scale.

### ARRIVAL ROUTE DESCRIPTION

HUMBO TRANSITION (HUMBO.HYTHR3):  
NMANN TRANSITION (NMANN.HYTHR3):  
RRUSH TRANSITION (RRUSH.HYTHR3):

From HYTHR on track 191° to cross ROBYE at 10000 and at 250K, then on track 192° to ASSUR. Then on track 192°. Expect radar vectors to final approach course.

SE-1, 31 OCT 2024 to 28 NOV 2024

SE-1, 31 OCT 2024 to 28 NOV 2024