

LOC/DME I-MYO 111.35 Chan 50 (Y)	APP CRS 360°	Rwy ldg TDZE Apt Elev	9000 335 341
---	------------------------	-----------------------------	---

ILS RWY 36R (CAT II & III)

MEMPHIS INTL (MEM)

Simultaneous approach authorized with Rwy 36L.
DME or RADAR required.

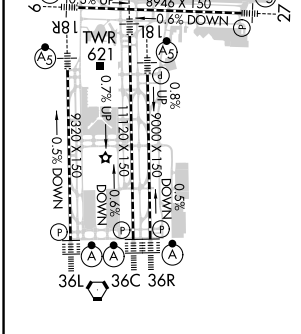
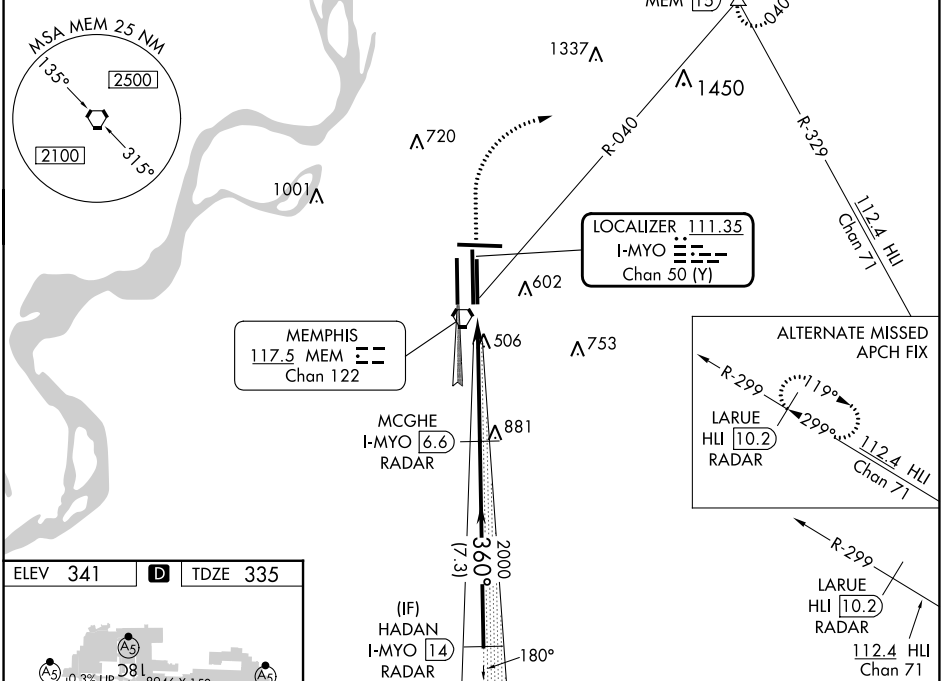


MISSED APPROACH: Climb to 1000 then climbing right turn to 5000 via heading 070° and MEM VORTAC R-040 to OROCU INT/MEM VORTAC 1.5 DME and hold, continue climb-in-hold to 5000.

MEMPHIS APP CON 119.1 291.6 (176°-355°) 125.8 338.3 (356°-175°)	MEMPHIS TOWER (Rwy 9-27) 118.3 257.8 (Rwys 18C-36C, 18L-36R) 119.7 257.8 (Rwy 18R-36L) 128.425 257.8	GND CON (Rwy 9-27) 121.0 379.2 (Rwys 18C-36C, 18L-36R) 121.9 379.2 (Rwy 18R-36L) 121.65 379.2	CLNC DEL 125.2
---	--	---	--------------------------

D-ATIS
127.75

RADAR REQUIRED



ELEV 341	TDZE 335				
1000	5000	MEM R-040	OROCU	MCGHE I-MYO RADAR 2000	HADAN I-MYO RADAR 3000
↑	hdg 070°		△		
<p>VGSI and ILS glidepath not coincident (VGSI Angle 3.00/TCH 69).</p> <p>GS 3.00% TCH 58</p>					
1131'		5 NM		7.3 NM	
CATEGORY	A	B	C	D	
S-ILS 36R	CAT II RA 109/12 100 DA 435				
S-ILS 36R	CAT IIIa RVR07				
S-ILS 36R	CAT IIIb RVR03				
S-ILS 36R	CAT IIIc NA				

TDZ/CL Rwys 18L, 18C, 18R, 36R, 36C, and 36L
HIRL all Rwys

CATEGORY II & III ILS - SPECIAL AIRCREW & AIRCRAFT CERTIFICATION REQUIRED

SE-1, 31 OCT 2024 to 28 NOV 2024

SE-1, 31 OCT 2024 to 28 NOV 2024