

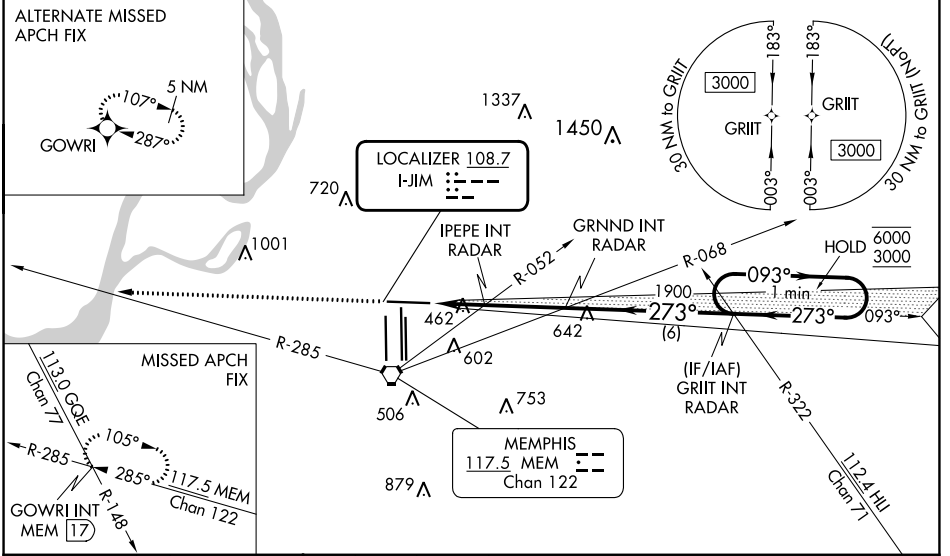
LOC I-JIM <b>108.7</b>	APP CRS <b>273°</b>	Rwy Idg TDZE Apt Elev	<b>8946</b> <b>292</b> <b>341</b>
---------------------------	------------------------	-----------------------------	---

# ILS or LOC RWY 27

MEMPHIS INTL (MEM)

RNAV 1-GPS or RADAR required for procedure entry.		MALSR	MISSED APPROACH: Climb to 5000 and intercept MEM VORTAC R-285 to GOWRI INT/17 DME and hold, continue climb-in-hold to 5000.
<p>▼ For inop ALS, increase S-ILS Cat E visibility to RVR 4000, and S-LOC Cat E visibility to 2 SM, IPEPE fix minimums S-LOC Cat E visibility to 1/4 SM.</p> <p>▲ *RVR 1800 authorized with use of FD or AP or HUD to DA.</p>			
MEMPHIS APP CON		MEMPHIS TOWER	GND CON
<b>119.1 291.6</b> (176°-355°)	(Rwy 9-27)	<b>118.3 257.8</b>	(Rwy 9-27) <b>121.0 379.2</b>
<b>125.8 338.3</b> (356°-175°)	(Rwys 18C-36C, 18L-36R)	<b>119.7 257.8</b>	(Rwys 18C-36C, 18L-36R) <b>121.9 379.2</b>
	(Rwy 18R-36L)	<b>128.425 257.8</b>	(Rwy 18R-36L) <b>121.65 379.2</b>

D-ATIS <b>127.75</b>	CLNC DEL <b>125.2</b>	CPDLC
-------------------------	--------------------------	-------



ELEV 341	TDZE 292	5000	VGSI and ILS glidepath not coincident (VGSI Angle 3.00/TCH 69).		One Minute Holding Pattern
		MEM R-285	GOWRI INT	GRNND INT RADAR	GRIIT INT RADAR
				1900	093° 6000
				273°	3000
				980	GS 3.00° TCH 54
				980-1	
				980-2	
				1020-2 1/4	
				1140-2 3/4	
				639 (700-2)	
				679 (700-2 1/4)	
				799 (800-2 3/4)	
				IPEPE FIX MINIMUMS (DUAL VOR RECEIVERS OR RADAR REQUIRED)	
				720-2/4	428 (400-1/2)
				720-40	428 (400-3/4)
				940-1	599 (600-1)
				940-1 1/2	599 (600-1 1/2)
				1020-2 1/4	679 (700-2 1/4)
				1140-2 3/4	799 (800-2 3/4)

SE-1, 31 OCT 2024 to 28 NOV 2024

SE-1, 31 OCT 2024 to 28 NOV 2024