

LOC/DME I-OHN 108.9 Chan 26	APP CRS 360°	Rwy Idg 9320 TDZE 321 Apt Elev 341
---	------------------------	---

ILS or LOC RWY 36L

MEMPHIS INTL (MEM)

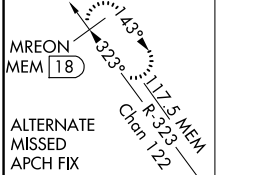
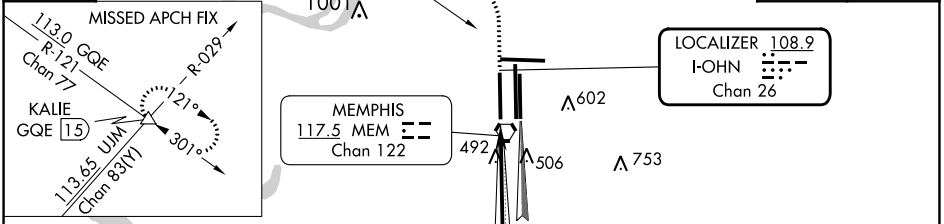
⚠ Simultaneous approach authorized with Rwy 36C/R.
⚠ For inoperative ALSF, increase S-ILS 36L Cat E visibility to RVR 4000, and S-LOC 36L Cat E visibility to 1½. DME or RADAR required.



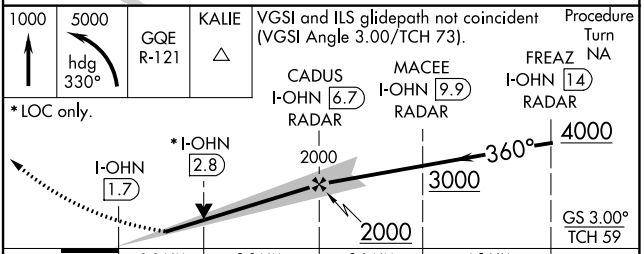
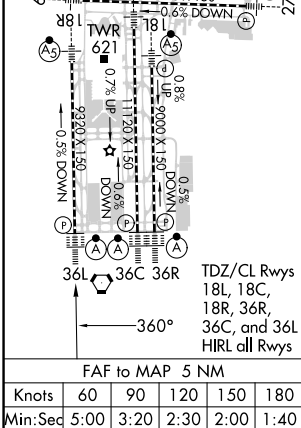
MISSED APPROACH: Climb to 1000 then climbing left turn to 5000 via heading 330° and GQE VOR/DME R-121 to KALIE INT/GQE 15 DME and hold, continue climb-in-hold to 5000.

MEMPHIS APP CON		MEMPHIS TOWER		GND CON	
119.1	291.6 (176°-355°)	(Rwy 9-27) 118.3	257.8	(Rwy 9-27) 121.0	379.2
125.8	338.3 (356°-175°)	(Rwys 18C-36C, 18L-36R) 119.7	257.8	(Rwys 18C-36C, 18L-36R) 121.9	379.2
		(Rwy 18R-36L) 128.425	257.8	(Rwy 18R-36L) 121.65	379.2

D-ATIS 127.75	113.0 GQE Chan 77	R-121	Λ720	CLNC DEL 125.2	CPDLC
-------------------------	--------------------------	-------	------	--------------------------	-------



ELEV 341	D	TDZE 321
-----------------	----------	-----------------



CATEGORY	A	B	C	D	E
S-ILS 36L	521/18		200 (200-½)	521/24 200 (200-½)	
S-LOC 36L	760/24	439 (500-½)	760/40 439 (500-¾)	760/50	439 (500-1)
☑ CIRCLING	940-1	599 (600-1)	940-1½ 599 (600-1½)	1020-2¼ 679 (700-2¼)	1140-2¾ 799 (800-2¾)

SE-1, 31 OCT 2024 to 28 NOV 2024

SE-1, 31 OCT 2024 to 28 NOV 2024