

LOC I-MEM	APP CRS	Rwy Idg	8946
109.5	093°	TDZE	259
		Apt Elev	341

ILS or LOC RWY 9

MEMPHIS INTL (MEM)

▼ For inop ALS, increase S-ILS 9 Cat E visibility to RVR 4000 and S-LOC 9 Cat E visibility to 1¾ SM.



MISSED APPROACH: Climb to 1000 then climbing right turn to 5000 on MEM R-151 to KEEZE INT/MEM 10.4 DME and hold, continue climb-in-hold to 5000.

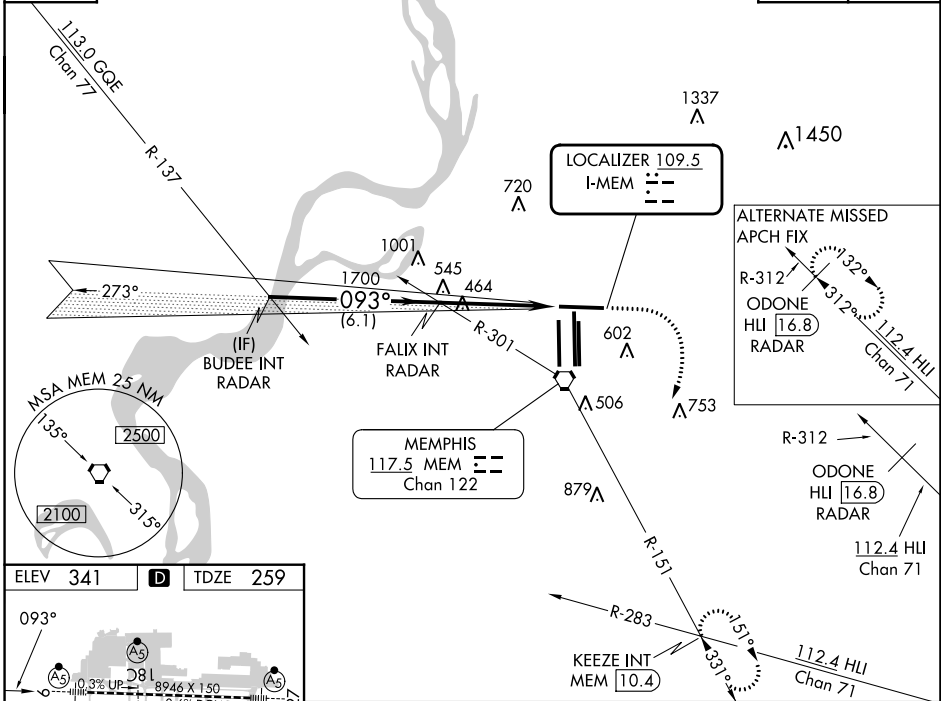
MEMPHIS APP CON		MEMPHIS TOWER		GND CON	
119.1 291.6	(176°-355°)	(Rwy 9-27)	118.3 257.8	(Rwy 9-27)	121.0 379.2
125.8 338.3	(356°-175°)	(Rwys 18C-36C, 18L-36R)	119.7 257.8	(Rwys 18C-36C, 18L-36R)	121.9 379.2
		(Rwy 18R-36L)	128.425 257.8	(Rwy 18R-36L)	121.65 379.2

D-ATIS
127.75

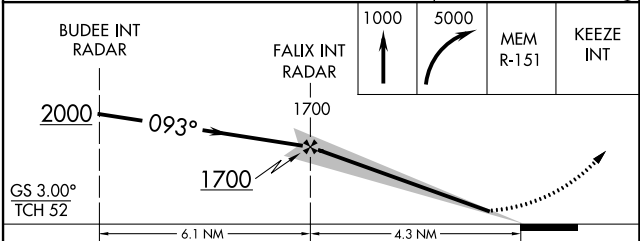
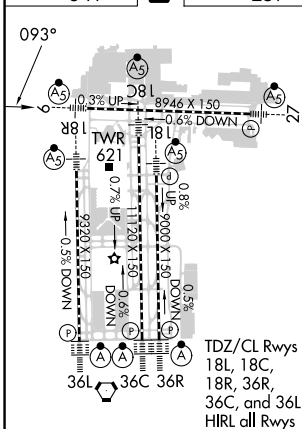
RADAR REQUIRED

CLNC DEL
125.2

CPDLC



ELEV 341	D	TDZE 259
----------	----------	----------



BUDEE INT RADAR	FALIX INT RADAR	1000	5000	MEM R-151	KEEZE INT
2000	1700				
GS 3.00°	TCH 52				
CATEGORY	A	B	C	D	E
S-ILS 9	466/24 207 (200-½)				
S-LOC 9	720/24 461 (400-½)	720/50 461 (400-1)	720/60 461 (400-1¼)		
<input checked="" type="checkbox"/> CIRCLING	940-1 599 (600-1)	940-1½ 599 (600-1½)	1020-2¼ 679 (700-2¼)	1140-2¾ 799 (800-2¾)	

SE-1, 31 OCT 2024 to 28 NOV 2024

SE-1, 31 OCT 2024 to 28 NOV 2024