

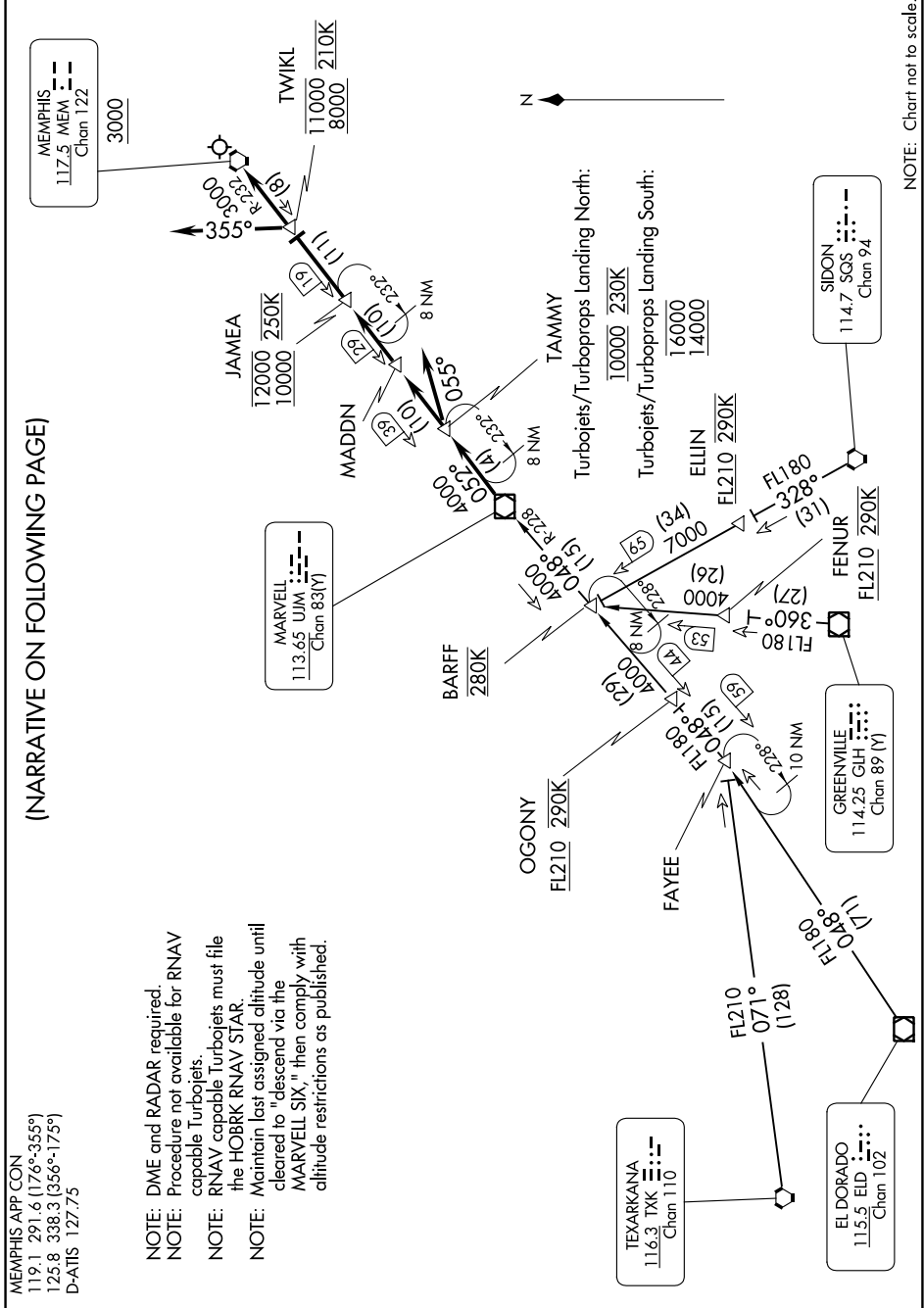
MARVELL SIX ARRIVAL

SE-1, 31 OCT 2024 to 28 NOV 2024

(NARRATIVE ON FOLLOWING PAGE)

MEMPHIS APP CON
119.1 291.6 (176°-355°)
125.8 338.3 (356°-175°)
D-AIIS 127.75

- NOTE: DME and RADAR required.
- NOTE: Procedure not available for RNAV capable Turbojets.
- NOTE: RNAV capable Turbojets must file the HOBKR RNAV STAR.
- NOTE: Maintain last assigned altitude until cleared to "descend via the MARVELL SIX," then comply with altitude restrictions as published.



NOTE: Chart not to scale

SE-1, 31 OCT 2024 to 28 NOV 2024

MARVELL SIX ARRIVAL

(UJM.UJM6) 10NOV16