


RNAV (RNP) X RWY 18R

MEMPHIS INTL (MEM)

APP CRS	Rwy Idg	9320
180°	TDZE	295
	Apt Elev	341

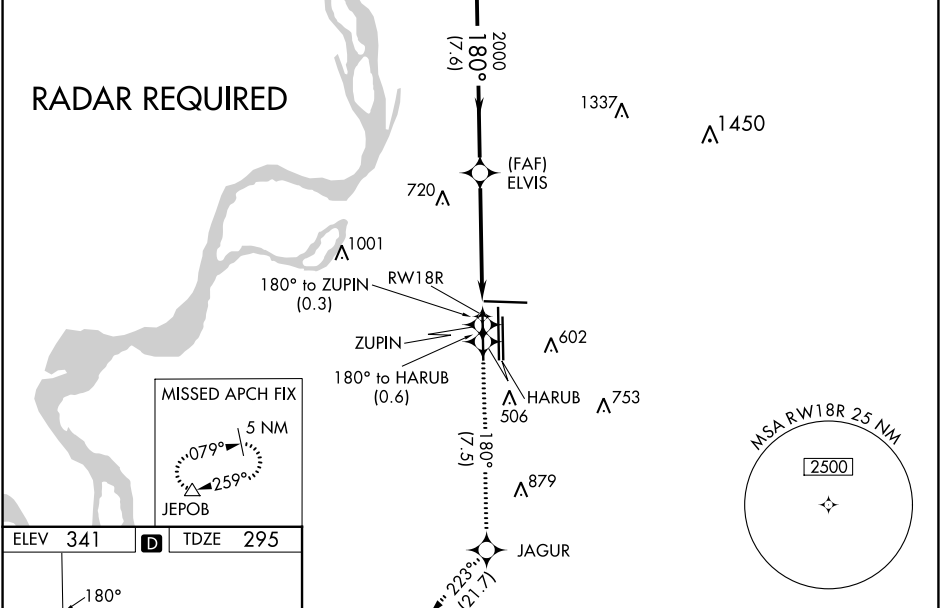
▼ For uncompensated Baro-VNAV systems, procedure NA below -9°C (16°F) or above 48°C (118°F). Simultaneous approach authorized. GPS required. Missed approach requires RNP less than 1.0. Use of FD or AP required during simultaneous operations.

MALSR

MISSED APPROACH: Climb to 5000 on track 180° to ZUPIN and on track 180° to HARUB and on track 180° to JAGUR and on track 223° to JEPOB and hold.

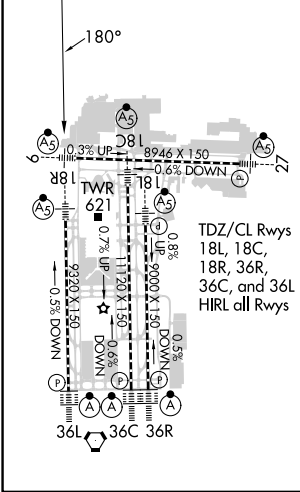
MEMPHIS APP CON	MEMPHIS TOWER	GND CON
119.1 291.6 (176°-355°)	118.3 257.8 (Rwy 9-27)	(Rwy 9-27) 121.0 379.2
125.8 338.3 (356°-175°)	119.7 257.8 (Rwys 18C-36C, 18L-36R)	(Rwys 18C-36C, 18L-36R) 121.9 379.2
	128.425 257.8 (Rwy 18R-36L)	(Rwy 18R-36L) 121.65 379.2

D-ATIS
127.75

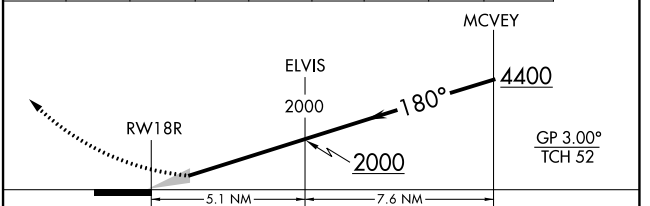
CLNC DEL **125.2** CPDLC



ELEV **341** TDZE **295**



5000	ZUPIN	HARUB	JAGUR	JEPOB
↑	tr 180°	tr 180°	tr 180°	tr 223°



CATEGORY	A	B	C	D
RNP 0.14 DA	737/45		442 (400-7/8)	

AUTHORIZATION REQUIRED

SE-1, 31 OCT 2024 to 28 NOV 2024

SE-1, 31 OCT 2024 to 28 NOV 2024