


# RNAV (RNP) Y RWY 18C

MEMPHIS INTL (MEM)

|             |          |              |
|-------------|----------|--------------|
| APP CRS     | Rwy Idg  | <b>11120</b> |
| <b>180°</b> | TDZE     | <b>290</b>   |
|             | Apt Elev | <b>341</b>   |

**▼** For uncompensated Baro-VNAV systems, procedure NA below -10°C (14°F) or above 54°C (130°F). GPS required. For inop ALS, increase RNP 0.30\* all Cats visibility to 1½ SM and RNP 0.30 all Cats visibility to 1½ SM. Simultaneous approach authorized. Use of FD or AP required during simultaneous operations.

**MALSR**  
  
**MISSED APPROACH:** Climb to 5000 on track 180° to CEDEN on track 137° to KEEZE and hold, continue climb-in-hold to 5000. \*Missed approach requires a minimum climb of 400 feet per NM to 1000.

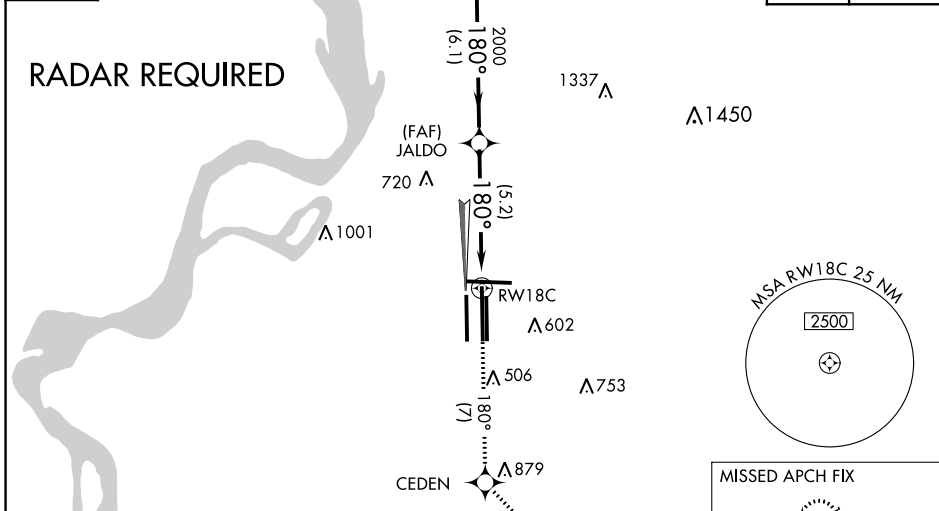
|                                |
|--------------------------------|
| MEMPHIS APP CON                |
| <b>119.1 291.6</b> (176°-355°) |
| <b>125.8 338.3</b> (356°-175°) |

|  |
|--|
| MEMPHIS TOWER                              |
| (Rwy 9-27) <b>118.3 257.8</b>              |
| (Rwys 18C-36C, 18L-36R) <b>119.7 257.8</b> |
| (Rwy 18R-36L) <b>128.425 257.8</b>         |

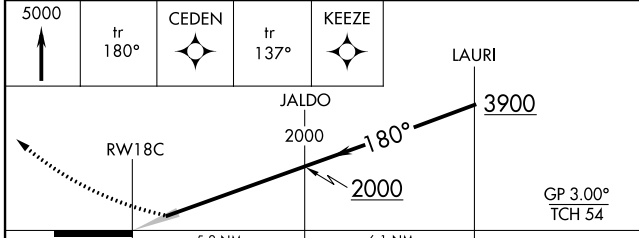
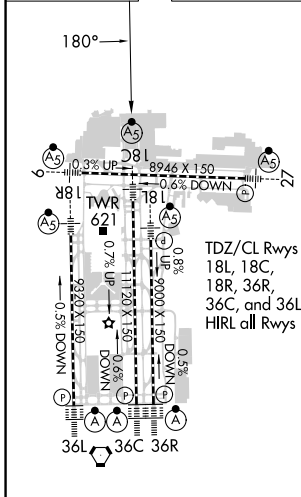
|  |
|--|
| GND CON                                    |
| (Rwy 9-27) <b>121.0 379.2</b>              |
| (Rwys 18C-36C, 18L-36R) <b>121.9 379.2</b> |
| (Rwy 18R-36L) <b>121.65 379.2</b>          |

|               |
|---------------|
| D-ATIS        |
| <b>127.75</b> |

|              |       |
|--------------|-------|
| CLNC DEL     | CPDLC |
| <b>125.2</b> |       |



|          |          |          |
|----------|----------|----------|
| ELEV 341 | <b>D</b> | TDZE 290 |
|----------|----------|----------|



|              |                    |   |   |   |
|--------------|--------------------|---|---|---|
| CATEGORY     | A                  | B | C | D |
| RNP 0.30 DA* | 655/35 365 (400-%) |   |   |   |
| RNP 0.30 DA  | 747/54 457 (500-1) |   |   |   |

**AUTHORIZATION REQUIRED**