


# RNAV (RNP) Y RWY 18R

MEMPHIS INTL (MEM)

APP CRS	Rwy Idg	<b>9320</b>
<b>180°</b>	TDZE	<b>295</b>
	Apt Elev	<b>341</b>

**▼** For uncompensated Baro-VNAV systems, procedure NA below -9°C (16°F) or above 48°C (118°F). Simultaneous approach authorized. GPS required. Use of FD or AP required during simultaneous operations. For inop ALS, increase RNP 0.19\* all Cats visibility to RVR 6000 and RNP 0.30 all Cats visibility to 1 3/4 SM.

**MALSR**



**MISSED APPROACH:** Climb to 5000 on track 180° to JAGUR and on track 223° to JEPOB and hold. \*Missed approach requires minimum climb of 425 feet per NM to 1000.

MEMPHIS APP CON

<b>119.1 291.6</b>	(176°-355°)
<b>125.8 338.3</b>	(356°-175°)

MEMPHIS TOWER

(Rwy 9-27)	<b>118.3 257.8</b>
(Rwys 18C-36C, 18L-36R)	<b>119.7 257.8</b>
(Rwy 18R-36L)	<b>128.425 257.8</b>

GND CON

(Rwy 9-27)	<b>121.0 379.2</b>
(Rwys 18C-36C, 18L-36R)	<b>121.9 379.2</b>
(Rwy 18R-36L)	<b>121.65 379.2</b>

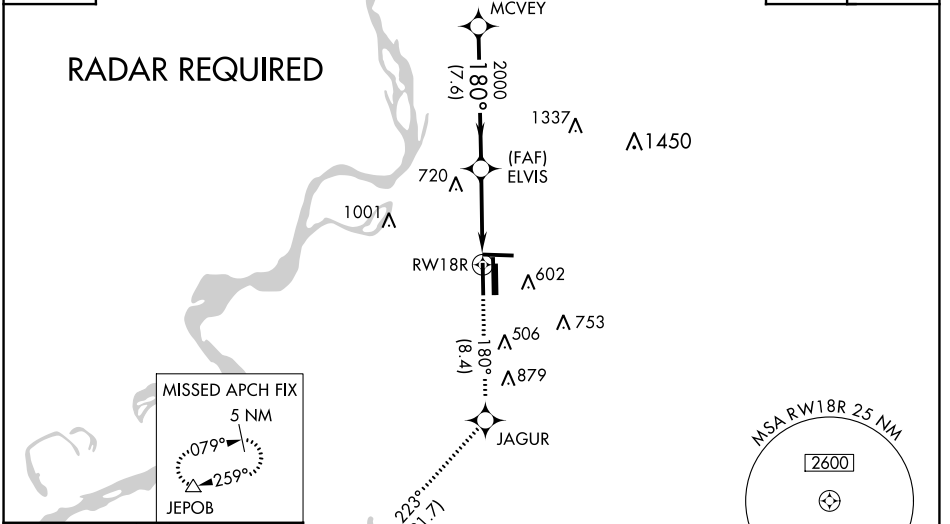
D-ATIS

**127.75**

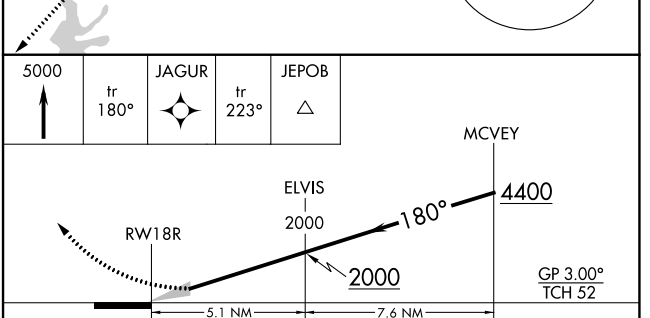
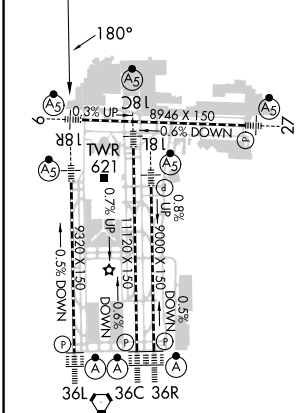
CLNC DEL

**125.2**

CPDLC



ELEV	<b>341</b>	<b>D</b>	TDZE	<b>295</b>
------	------------	----------	------	------------



CATEGORY	A	B	C	D
RNP 0.19 DA *		645/40	350 (400-3/4)	
RNP 0.30 DA		771/60	476 (500-1/4)	

MEMPHIS, TENNESSEE  
 Orig-E 29MAR18

35°03'N-89°59'W

MEMPHIS INTL (MEM)  
**RNAV (RNP) Y RWY 18R**

**AUTHORIZATION REQUIRED**

SE-1, 31 OCT 2024 to 28 NOV 2024

SE-1, 31 OCT 2024 to 28 NOV 2024