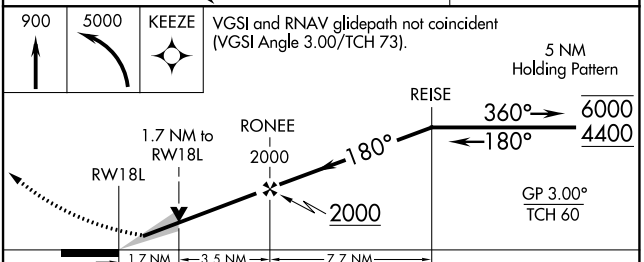
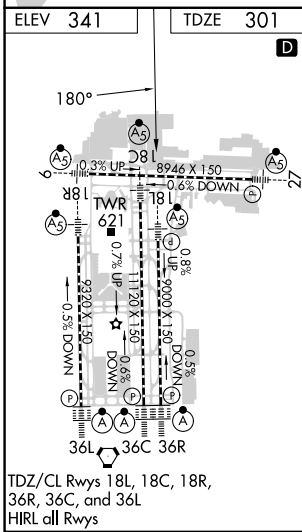
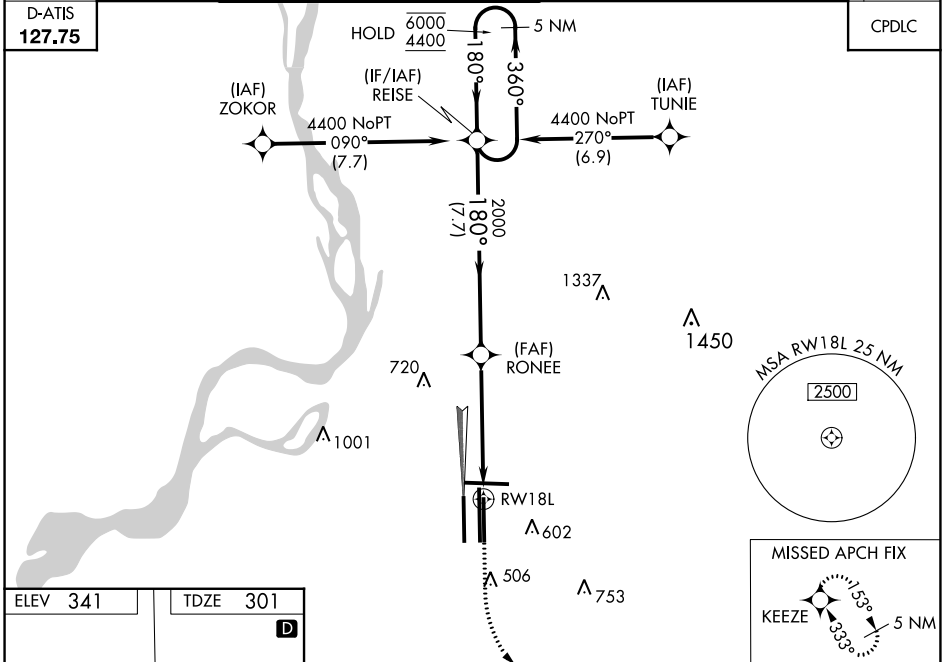


WAAS CH 53307 W18B	APP CRS 180°	Rwy Idg TDZE Apt Elev	9000 301 341
--	------------------------	-----------------------------	---

RNAV (GPS) Z RWY 18L

MEMPHIS INTL (MEM)

RNP APCH - GPS		MALSR	MISSED APPROACH: Climb to 900 then climbing left turn to 5000 direct KEEZE and hold, continue climb-in-hold to 5000.
Simultaneous approach authorized. For uncompensated Baro-VNAV systems, LNAV/VNAV NA below -15°C or above 54°C. LNAV procedure NA during simultaneous operations. Use of FD or AP required during simultaneous operations. For inop ALS, increase LNAV/VNAV all Cats visibility to 1½ SM and LNAV Cat C/D visibility to 1½ SM.			
MEMPHIS APP CON	MEMPHIS TOWER	GND CON	CLNC DEL
119.1 291.6 (176°-355°)	(Rwy 9-27) 118.3 257.8	(Rwy 9-27) 121.0 379.2	
125.8 338.3 (356°-175°)	(Rwys 18C-36C, 18L-36R) 119.7 257.8	(Rwys 18C-36C, 18L-36R) 121.9 379.2	125.2
	(Rwy 18R-36L) 128.425 257.8	(Rwy 18R-36L) 121.65 379.2	



CATEGORY	A	B	C	D
LPV DA	557/18 256 (300-½)			
LNAV/VNAV DA	874-1¼ 573 (600-1¼)			
LNAV MDA	880/24	579 (600-½)	880-1¼	579 (600-1¼)
CIRCLING	940-1	599 (600-1)	940-1½ 599 (600-1½)	1020-2¼ 679 (700-2¼)

SE-1, 31 OCT 2024 to 28 NOV 2024

SE-1, 31 OCT 2024 to 28 NOV 2024