

(WLDER.WLDER1) 23334  
**WLDER ONE ARRIVAL**

AL-253 (FAA)

MEMPHIS INTL (MEM)  
 MEMPHIS, TENNESSEE

MEMPHIS APP CON  
 119.1 291.6 (176°-355°)  
 125.8 338.3 (356°-175°)  
 D-ATIS  
 127.75

POCKET CITY  
 113.3 PXV  
 Chan 80

NASHVILLE  
 114.1 BNA  
 Chan 88

MC KELLAR  
 114.85 MKL  
 Chan 95(Y)

DASAC  
 11000  
 9000

CASOT  
 FL240 290K

SPKER  
 FL230 280K

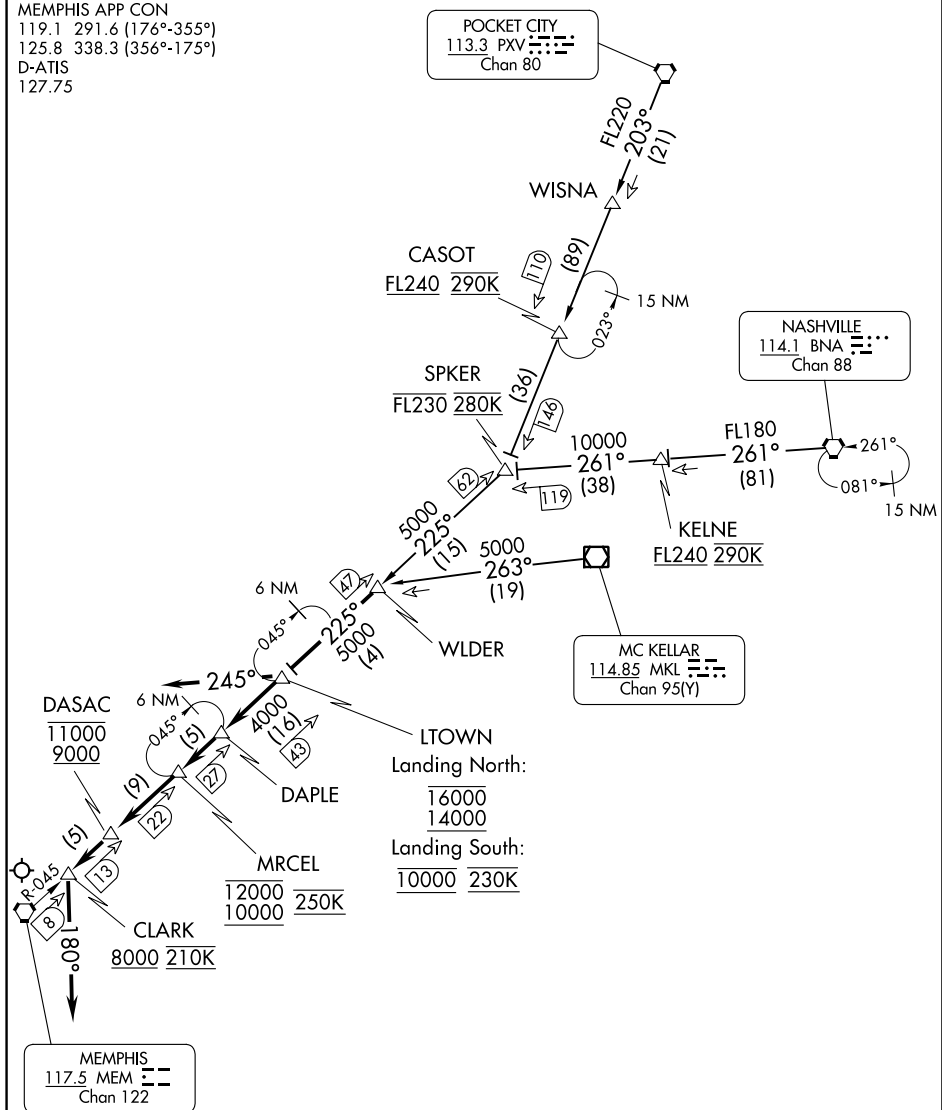
KELNE  
 FL180 261°  
 FL240 290K

LTOWN  
 Landing North:  
 16000  
 14000

MRCEL  
 12000 250K  
 10000

CLARK  
 8000 210K

MEMPHIS  
 117.5 MEM  
 Chan 122



- NOTE: DME and RADAR required.
- NOTE: Procedure NA for RNAV capable jets.
- NOTE: RNAV capable jets must file the BLUZZ RNAV STAR.
- NOTE: Maintain last assigned altitude until cleared to "Descend via the WLDER ONE", then comply with altitude restrictions as published.

(NARRATIVE ON FOLLOWING PAGE)

NOTE: Chart not to scale.

**WLDER ONE ARRIVAL**  
 (WLDER.WLDER1) 24MAR22

MEMPHIS, TENNESSEE  
 MEMPHIS INTL (MEM)

SE-1, 31 OCT 2024 to 28 NOV 2024

SE-1, 31 OCT 2024 to 28 NOV 2024