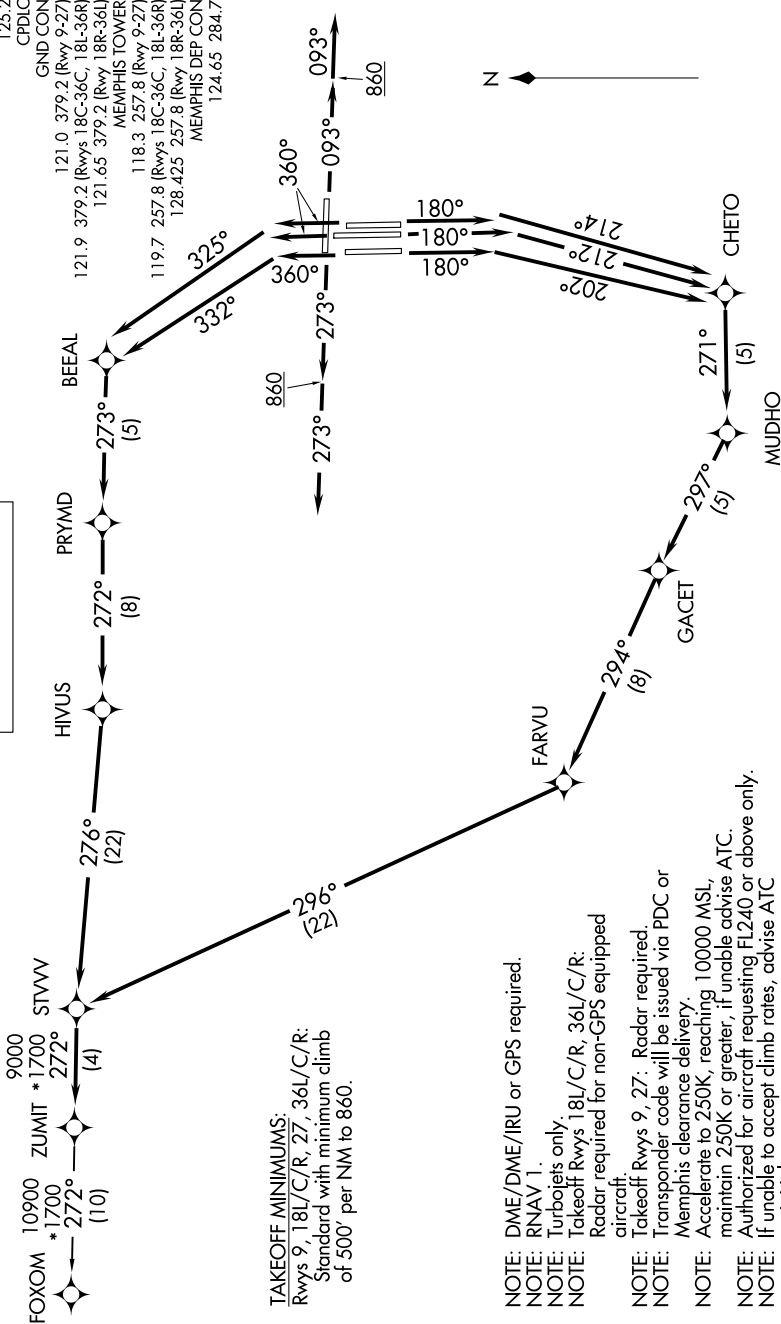


# ZUMIT FIVE DEPARTURE (RNAV)

SE-1, 31 OCT 2024 to 28 NOV 2024

**TOP ALTITUDE:  
5000**



NOTE: Chart not to scale.

- NOTE: DME/DME/IRU or GPS required.
- NOTE: RNAV 1.
- NOTE: Turbojets only.
- NOTE: Takeoff Rwys 18L/C/R, 36L/C/R:  
Radar required for non-GPS equipped aircraft.
- NOTE: Takeoff Rwys 9, 27: Radar required.
- NOTE: Transponder code will be issued via PDC or Memphis clearance delivery.
- NOTE: Accelerate to 250K, reaching 10000 MSL, maintain 250K or greater, if unable advise ATC.
- NOTE: Authorized for aircraft requesting FL240 or above only.
- NOTE: If unable to accept climb rates, advise ATC on initial contact.

(NARRATIVE ON FOLLOWING PAGE)

SE-1, 31 OCT 2024 to 28 NOV 2024

# ZUMIT FIVE DEPARTURE (RNAV)