

LOC/DME I-KQ	APP CRS	Rwy Idg	9013
111.35	191°	TDZE	293
Chan 50 (Y)		Apt Elev	298

ILS or LOC RWY 19

KEY FLD (MEI)

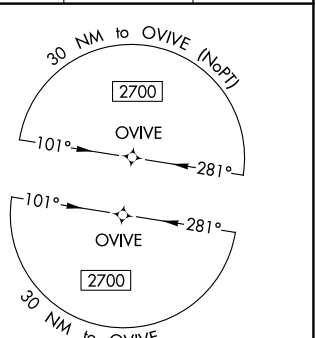
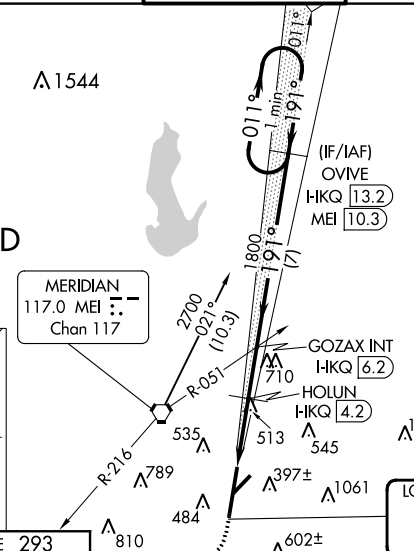
⚠ When local altimeter not received, use Hattiesburg/Laurel Rgnl altimeter setting and increase all DA 138 feet and all MDA 140 feet, increase S-ILS 19 all Cats visibility to RVR 6000, S-LOC 19 Cats C, D, and E visibility to 2 miles, and Circling Cats A/D visibility 1/4 mile and Cat C visibility 1/2 mile; increase HOLUN Fix minimums S-LOC Cats C, D and E to 1 1/2 mile, and Circling Cat C visibility 1/2 mile, and Cat D visibility 1/4 mile. For inop MALSRL, increase S-ILS 19 all Cats visibility to RVR 6000, and S-LOC 19 Cat E to 2 miles; increase HOLUN fix minimums S-LOC 19 Cat E visibility to 1 1/2 mile. For inop MALSRL when using Hattiesburg/Laurel Rgnl altimeter setting, increase S-ILS 19 all Cats visibility to 1 1/2 mile, and S-LOC 19 Cat E to 2 1/2 miles; increase HOLUN Fix minimums S-LOC 19 Cat E visibility to 1 3/4 mile. Helicopter visibility reduction below RVR 4000 NA. Night landing: Rwy 22 NA. Circling NA southeast of Rwy 1 and 22. VDP NA when using Hattiesburg/Laurel Rgnl altimeter setting.

MALSRL

MISSED APPROACH:
Climb to 1000 then climbing right turn to 3000 on heading 250° and MEI VORTAC R-216 to PAULD INT/MEI 13.3 DME and hold.

ATIS	MERIDIAN APP CON *	KEY TOWER *	GND CON	CLNC DEL	UNICOM
126.475 291.675	120.5 269.325	133.975 (CTAF) 0 257.8	121.9 348.6	121.9 348.6	122.95

ALTERNATE MISSED APCH FIX



DME REQUIRED

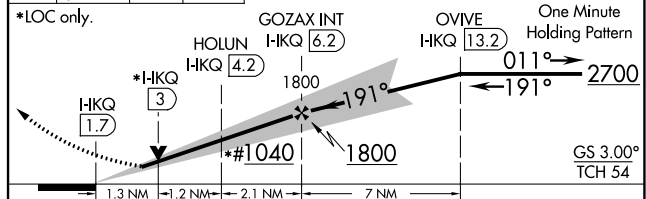
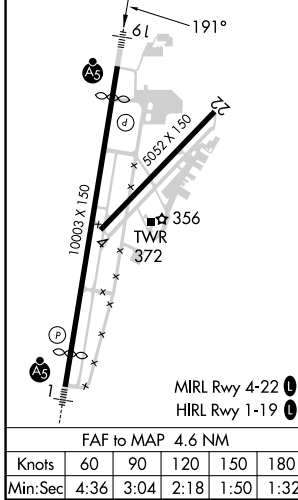
MISSED APCH FIX

GPS REQUIRED FOR TERMINAL ARRIVAL AREA

LOCALIZER 111.35
I-HKQ
Chan 50 (Y)

ELEV	298	TDZE	293
------	-----	------	-----

1000 3000 MEI R-216 PAULD VGSI and ILS glidepath not coincident (VGSI Angle 3.00/TCH 69). #1180 when using Hattiesburg/Laurel Rgnl altimeter setting.



CATEGORY	A	B	C	D	E
S-ILS 19	633/40 340 (400-3/4)				
S-LOC 19	1040/40	747 (800-3/4)	1040-1 3/4	747 (800-1 3/4)	1120-3
CIRCLING	1040-1	1040-1 1/4	1040-2 1/4	1120-2 3/4	1120-3
	742 (800-1)	742 (800-1 1/4)	742 (800-2 1/4)	822 (900-2 3/4)	822 (900-3)
HOLUN FIX MINIMUMS					
S-LOC 19	780/40	487 (500-3/4)	780/50	487 (500-1)	
CIRCLING	860-1	880-1	960-1 3/4	1120-2 3/4	1120-3
	562 (600-1)	582 (600-1)	662 (700-1 1/4)	822 (900-2 3/4)	822 (900-3)

SC-4, 31 OCT 2024 to 28 NOV 2024

SC-4, 31 OCT 2024 to 28 NOV 2024