

WAAS CH 86500 W01A	APP CRS 011°	Rwy Idg 9013 TDZE 289 Apt Elev 298
--	------------------------	---

RNAV (GPS) RWY 1

KEY FLD (MEI)

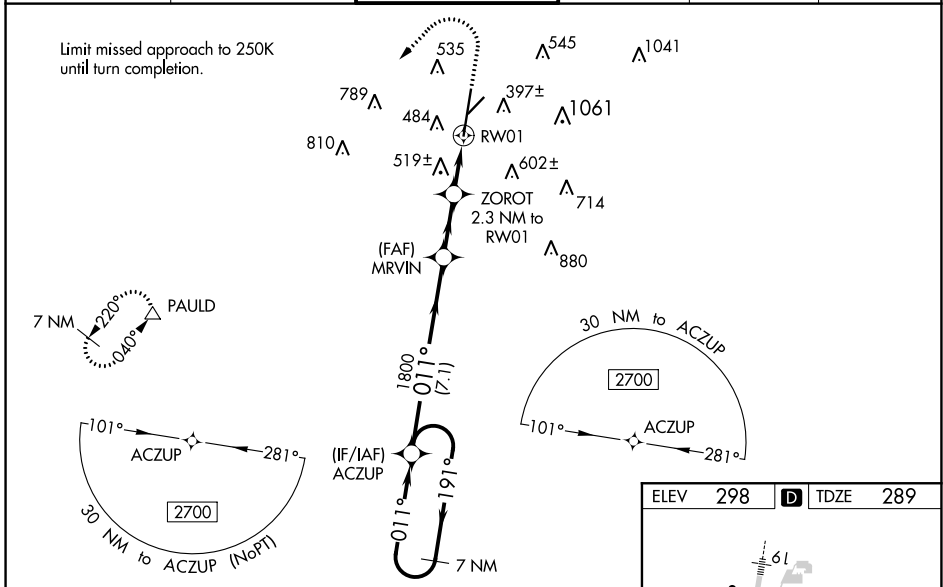
⚠ For uncompensated Baro-VNAV systems, LNAV/VNAV NA below -8°C (18°F) or above 54°C (130°F). Circling NA southeast of Rwy 1 and 22. DME/DME RNP-0.3 NA. When local altimeter setting not received, use Hattiesburg/Laurel Rgnl altimeter setting and increase all DA 138 feet and all MDA 140 feet, LPV all Cats visibility to RVR 3100, LNAV/VNAV all Cats and LNAV Cats C, D, and E visibilities to 1½ mile, and Circling Cat C visibility ½ mile and Cat D visibility ¼ mile. For inop MALSRL increase LPV Cat E to RVR 4000, LNAV/VNAV Cat E visibility to RVR 6000, and LNAV Cat E visibility to 1½ mile. For inop MALSRL when using Hattiesburg/Laurel Rgnl altimeter setting, increase LPV all Cats visibility to RVR 5000, LNAV/VNAV Cat E visibility to 1½ mile, and LNAV Cat E visibility to 1¾ mile. VDP and Baro-VNAV NA when using Hattiesburg/Laurel Rgnl altimeter setting. Night landing: Rwy 22 NA. ** RVR 1800 authorized with use of FD or AP or HUD to DA, NA when using Hattiesburg/Laurel Rgnl altimeter setting.

MALSRL

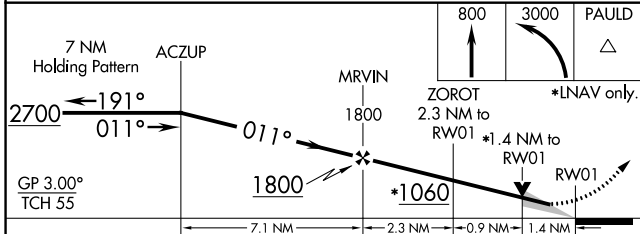
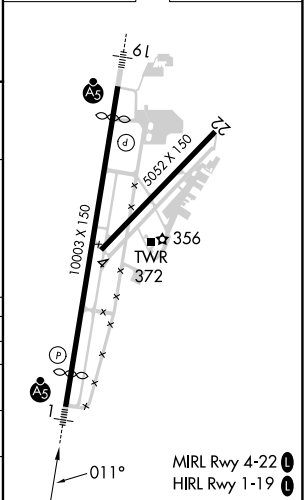


MISSED APPROACH:
Climb to 800 then climbing left turn to 3000 direct PAULD and hold.

ATIS 126.475 291.675	MERIDIAN APP CON * 120.5 269.325	KEY TOWER * 133.975 (CTAF) 257.8	GND CON 121.9 348.6	CLNC DEL 121.9 348.6	UNICOM 122.95
--------------------------------	--	--	-------------------------------	--------------------------------	-------------------------



ELEV 298	D TDZE 289
----------	-------------------



CATEGORY	A	B	C	D	E
LPV DA **	489/24		200 (200-½)		
LNAV/VNAV DA	709/47		420 (500-1)		
LNAV MDA	780/24	491 (500-½)	780/50		491 (500-1)
C CIRCLING	860-1 562 (600-1)	880-1 582 (600-1)	960-1¾ 662 (700-1¾)	1120-2¾ 822 (900-2¾)	1120-3 822 (900-3)

RNAV (GPS) RWY 1

SC-4, 31 OCT 2024 to 28 NOV 2024

SC-4, 31 OCT 2024 to 28 NOV 2024