

(ALTNN2.ALTNN) 24081

AL-256 (FAA)

MIAMI-OPA LOCKA EXEC (OPF')

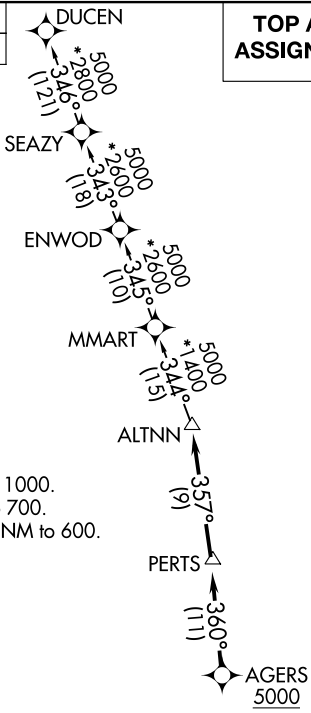
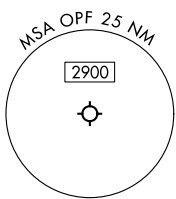
MIAMI, FLORIDA

ALTNN TWO DEPARTURE (RNAV)

MIAMI DEP CON
 119.45 290.325
 ATIS
 125.9
 CLNC DEL
 119.2
 GND CON
 120.025
 OPA LOCKA TOWER *
 134.675 (CTAF)

RNAV 1 - DME/DME/IRU or GPS.
 RADAR required.

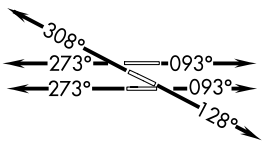
**TOP ALTITUDE:
 ASSIGNED BY ATC**



TAKEOFF MINIMUMS

Rwy 9L: Standard with minimum climb of 500'/NM to 1000.
 Rwy 9R: Standard with minimum climb of 500'/NM to 700.
 Rws 12, 27R: Standard with minimum climb of 500'/NM to 600.
 Rws 27L, 30: Standard.

NOTE: Jet aircraft only.
 NOTE: Accelerate to 250K until leaving 10000, if unable, advise ATC.



NOTE: Chart not to scale.

DEPARTURE ROUTE DESCRIPTION

- TAKEOFF RUNWAYS 9L/R: Climb on heading 093° or as assigned by ATC for RADAR vectors to cross AGERS at or above 5000, thence. . . .
- TAKEOFF RUNWAY 12: Climb on heading 128° or as assigned by ATC for RADAR vectors to cross AGERS at or above 5000, thence. . . .
- TAKEOFF RUNWAYS 27L/R: Climb on heading 273° or as assigned by ATC for RADAR vectors to cross AGERS at or above 5000, thence. . . .
- TAKEOFF RUNWAY 30: Climb on heading 308° or as assigned by ATC for RADAR vectors to cross AGERS at or above 5000, thence. . . .

. . . . on track 360° to PERTS, then on track 357° to ALTNN, then on assigned transition, maintain ATC assigned altitude. Expect filed altitude within 10 minutes after departure.

DUCEN TRANSITION (ALTNN2.DUCEN)

SE-3, 31 OCT 2024 to 28 NOV 2024

SE-3, 31 OCT 2024 to 28 NOV 2024

ALTNN TWO DEPARTURE (RNAV)
 (ALTNN2.ALTNN) 21MAR24

MIAMI, FLORIDA
 MIAMI-OPA LOCKA EXEC (OPF')