


| | | |
|---------------------------|------------------------|---|
| LOC I-OPF 110.5 | APP CRS 093° | Rwy Idg 8002 TDZE 8 Apt Elev 8 |
|---------------------------|------------------------|---|

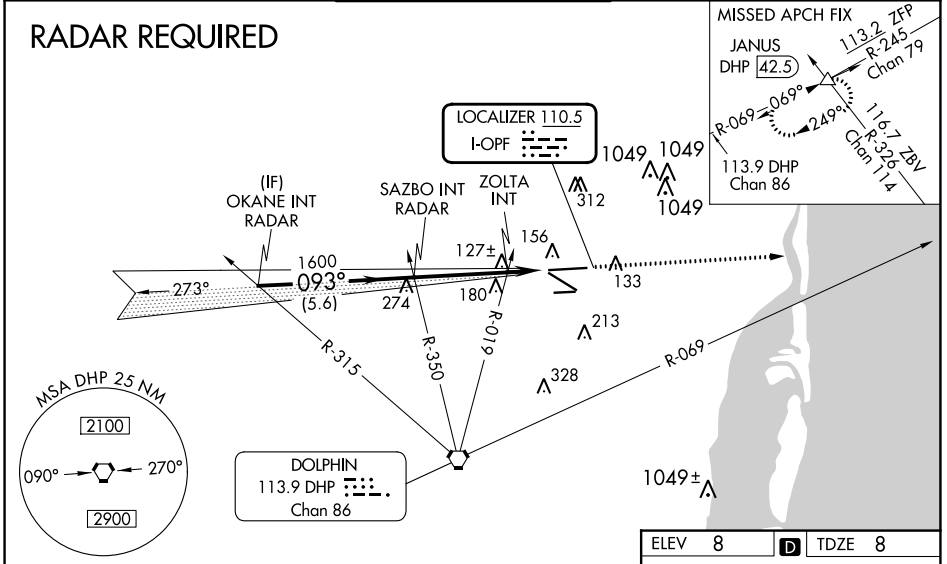
ILS or LOC RWY 9L

MIAMI-OPA LOCKA EXEC(OPF)

⚠ Inop table does not apply. Helicopter visibility reduction below 3/4 SM NA.
⚠ Caution: Lights on highway 0.7 NM north may be mistaken for runway.
 When local altimeter setting not received, use Miami Intl altimeter setting and increase all DA/MDA 20 feet and Circling Cat D visibility 1/4 SM. For inop MALSRL, increase S-LOC 9L Cats A and B visibility to 1 mile and Cats C and D visibility to 1 3/8 miles. ZOLTA Fix Minimums, for inop MALSRL, increase S-LOC 9L all Cats visibility to 1 mile. ZOLTA Fix Minimums, for inop MALSRL, when using Miami Intl altimeter setting, increase Cats A and B visibility to 1 mile and Cats C and D visibility to 1 1/8 miles. For inop MALSRL, when using Miami Intl altimeter setting, increase S-ILS 9L all Cats visibility to 7/8 mile.

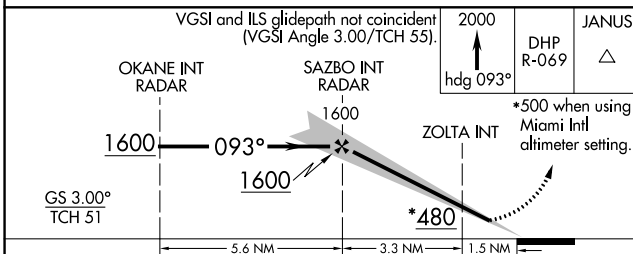
MALSRL

 MISSED APPROACH: Climb to 2000 heading 093° and DHP VORTAC R-069 to JANUS INT/DHP 42.5 DME and hold.

| | | | | | |
|----------------------|---------------------------------------|--|---------------------------|--------------------------|----------------------|
| ATIS 125.9 | MIAMI APP CON 128.6 306.975 | OPA LOCKA TOWER ★ 134.675 (CTAF) 0 | GND CON 120.025 | CLNC DEL 119.2 | GCO 119.45 |
|----------------------|---------------------------------------|--|---------------------------|--------------------------|----------------------|

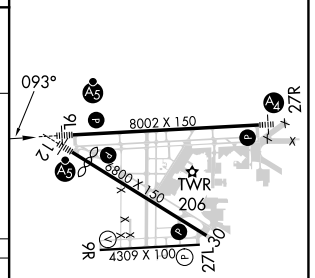


SE-3, 31 OCT 2024 to 28 NOV 2024

SE-3, 31 OCT 2024 to 28 NOV 2024



| | | |
|--------|---|--------|
| ELEV 8 | D | TDZE 8 |
|--------|---|--------|



| CATEGORY | A | B | C | D |
|--------------------|---------|---------------|------------------------------|------------------------------|
| S-ILS 9L | | 258-3/4 | 250 (300-3/4) | |
| S-LOC 9L | 480-3/4 | 472 (500-3/4) | 480-1 | 472 (500-1) |
| CIRCLING | 540-1 | 532 (600-1) | 620-1 3/4 612 (700-1 3/4) | 740-2 1/4 732 (800-2 1/4) |
| ZOLTA FIX MINIMUMS | | | | |
| S-LOC 9L | | 380-3/4 | 372 (400-3/4) | |
| CIRCLING | 540-1 | 532 (600-1) | 620-1 3/4 612 (700-1 3/4) | 740-2 1/4 732 (800-2 1/4) |

MIRL Rwy 9R-27L
 HIRL Rwy 9L-27R and 12-30

FAF to MAP 4.8 NM

| | | | | | |
|---------|------|------|------|------|------|
| Knots | 60 | 90 | 120 | 150 | 180 |
| Min:Sec | 4:48 | 3:12 | 2:24 | 1:55 | 1:36 |