

(BNGOS4.BNGOS) 24081

AL-257 (FAA)

MIAMI INTL (MIA)  
MIAMI, FLORIDA

# BNGOS FOUR DEPARTURE (RNAV) Departure Routes

SE-3, 31 OCT 2024 to 28 NOV 2024

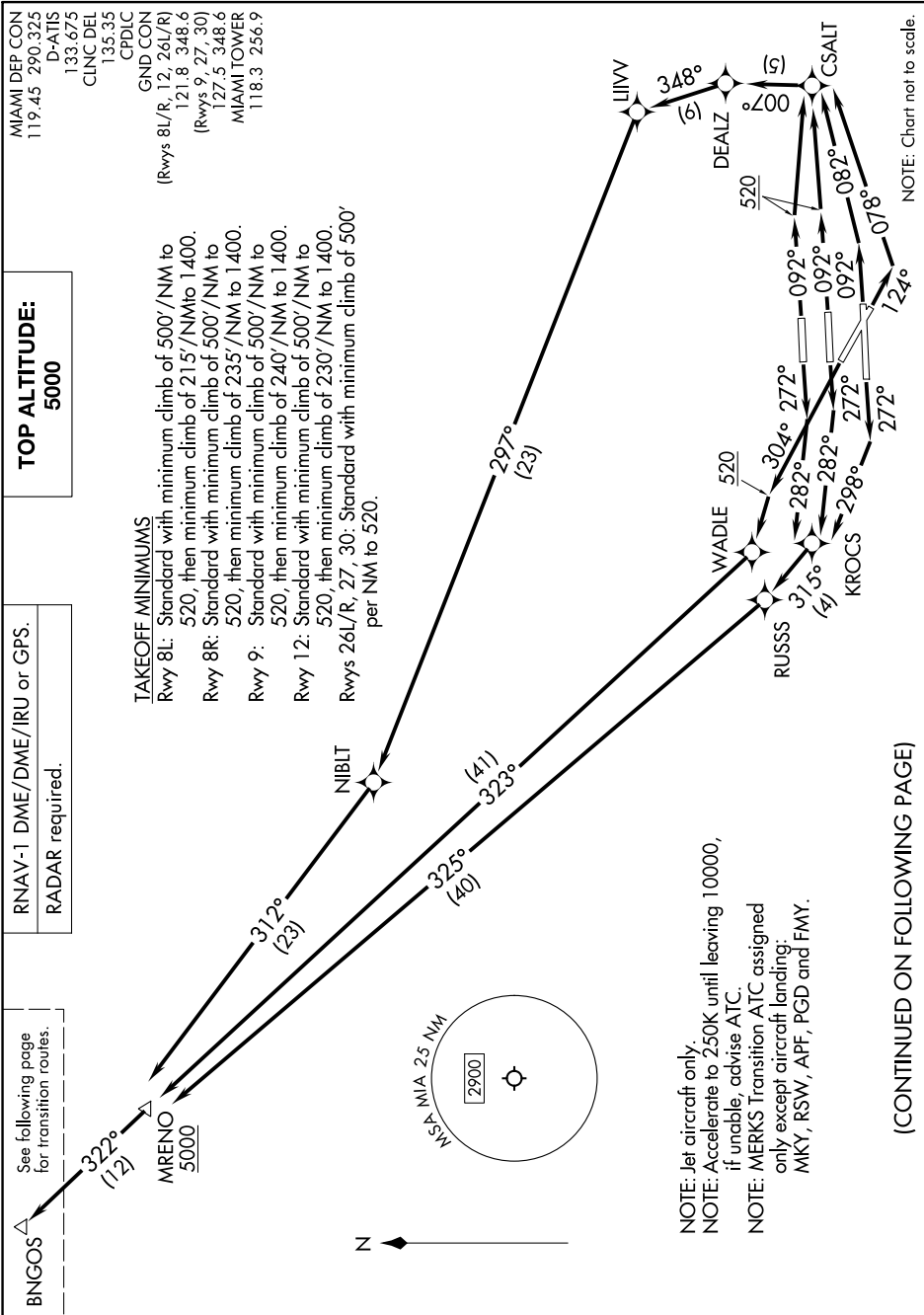
BNGOS  
See following page for transition routes.

RNAV-1 DME/DME/IRU or GPS.  
RADAR required.

**TOP ALTITUDE:**  
**5000**

MIAMI DEP CON  
119.45 290.325  
D-AIIS  
133.675  
CLINC DEL  
135.35  
CPDIC  
GND CON  
(Rwys 8L/R, 12, 26L/R)  
121.8 348.6  
(Rwys 9, 27, 30)  
127.5 348.6  
MIAMI TOWER  
118.3 256.9

**TAKEOFF MINIMUMS**  
Rwy 8L: Standard with minimum climb of 500'/NM to 520, then minimum climb of 215'/NM to 1400.  
Rwy 8R: Standard with minimum climb of 500'/NM to 520, then minimum climb of 235'/NM to 1400.  
Rwy 9: Standard with minimum climb of 500'/NM to 520, then minimum climb of 240'/NM to 1400.  
Rwy 12: Standard with minimum climb of 500'/NM to 520, then minimum climb of 230'/NM to 1400.  
Rwys 26L/R, 27, 30: Standard with minimum climb of 500' per NM to 520.



# BNGOS FOUR DEPARTURE (RNAV) Departure Routes

MIAMI, FLORIDA  
MIAMI INTL (MIA)

(BNGOS4.BNGOS) 21MAR24

(CONTINUED ON FOLLOWING PAGE)

SE-3, 31 OCT 2024 to 28 NOV 2024