

GLADZ FOUR DEPARTURE (RNAV) Transition Routes

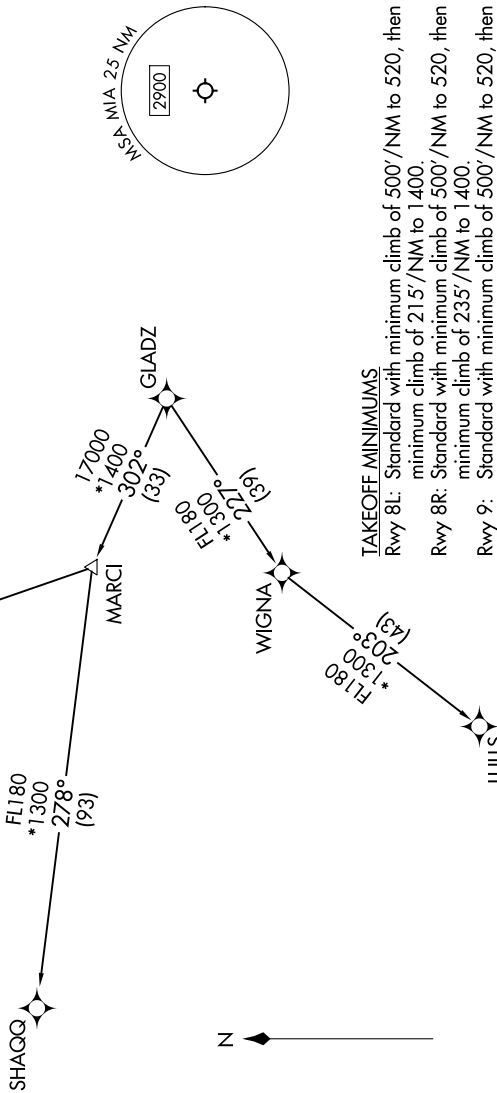
SE-3, 31 OCT 2024 to 28 NOV 2024

TOP ALTITUDE:
5000

RNAV-1 DME/DME/IRU or GPS.
RADAR required for NON-GPS equipped aircraft.
RADAR required.

MIAMI DEP CON
119.45 290.325 (Departing East)
125.5 354.1 (Departing West)
D-ATIS
133.675
CLNC DEL
135.35
CFDLC
GND CON
(Rvys 8L/R, 12, 26L/R) 121.8 348.6
(Rvys 9, 27, 30) 127.5 348.6
MIAMI TOWER
118.3 256.9

NOTE: Jet aircraft only.
NOTE: Accelerate to 250K until leaving 10000, if unable, advise ATC.
NOTE: SHAGG and BAGGS transitions ATC assigned except aircraft departing MIA.



TAKEOFF MINIMUMS
Rwy 8L: Standard with minimum climb of 500'/NM to 520, then minimum climb of 215'/NM to 1400.
Rwy 8R: Standard with minimum climb of 500'/NM to 520, then minimum climb of 235'/NM to 1400.
Rwy 9: Standard with minimum climb of 500'/NM to 520, then minimum climb of 240'/NM to 1400.
Rwy 12: Standard with minimum climb of 500'/NM to 520, then minimum climb of 230'/NM to 1400.
Rvys 26L/R, 27, 30: Standard with minimum climb of 500'/NM to 520.



NOTE: Chart not to scale. (CONTINUED ON FOLLOWING PAGE)

SE-3, 31 OCT 2024 to 28 NOV 2024