

MIAMI, FLORIDA

AL-257 (FAA)

24137

WAAS CH <b>81905</b> <b>W26B</b>	APP CRS <b>272°</b>	Rwy Idg <b>10220</b> TDZE <b>9</b> Apt Elev <b>9</b>
--	------------------------	--

# RNAV (GPS) Y RWY 26L

MIAMI INTL (MIA)

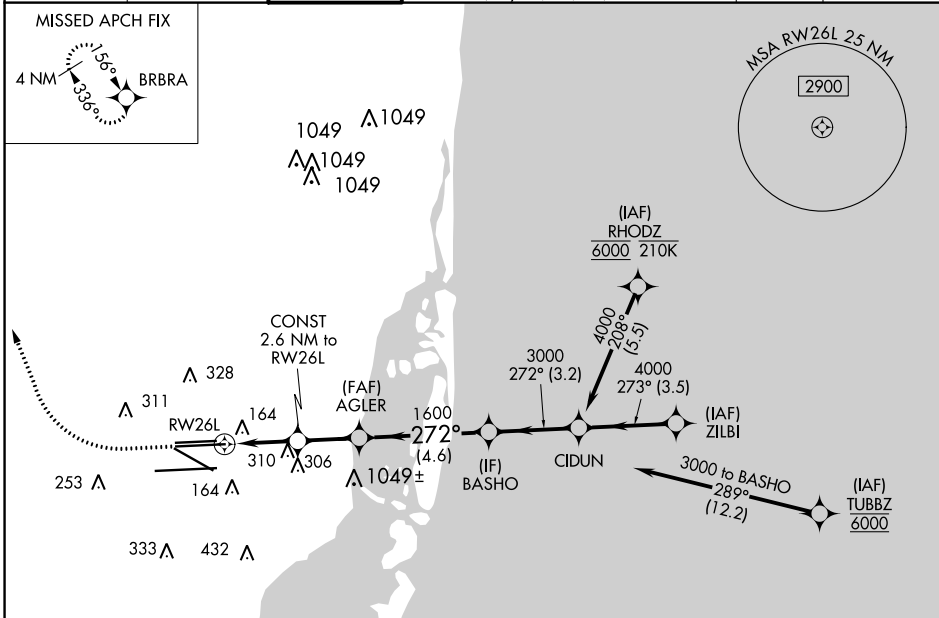
RNP APCH - GPS.

Simultaneous approach authorized. LNAV procedure NA during simultaneous operations. Inop table does not apply to LPV all Cats. For uncompensated Baro-VNAV systems, LNAV/VNAV NA below 9°C or above 54°C.

MALSF

MISSED APPROACH: Climb to 800 then climbing right turn to 4000 direct BRBRA and hold, continue climb-in-hold to 4000.

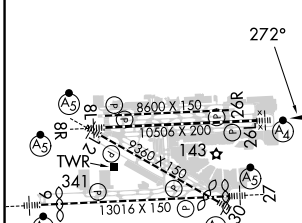
D-ATIS ARR <b>119.15</b> DEP <b>133.675</b>	MIAMI APP CON <b>124.85 322.3</b>	MIAMI TOWER <b>118.3 256.9</b>	GND CON <b>121.8</b> (Rwys 8L/R, 12, 26L/R) <b>127.5</b> (Rwys 9, 27, 30)	<b>348.6</b>	CLNC DEL <b>135.35</b>	CPDLC
---	--------------------------------------	-----------------------------------	---	--------------	---------------------------	-------



ELEV 9	<b>D</b>	TDZE 9
--------	----------	--------

800 4000 BRBRA

VGSI and RNAV glidepath not coincident (VGSI Angle 3.00/TCH 73).



CATEGORY	A	B	C	D
LPV DA		209/40	200 (200-3/4)	
LNAV/VNAV DA		348/40	339 (400-3/4)	
LNAV MDA	560/40	551 (600-3/4)	560-13/8	551 (600-13/8)

TDZ/CL Rwy 8R  
REIL Rwys 8L and 26R  
HIRL all Rwys

MIAMI, FLORIDA  
Amdt 4 14JUL22

25°48'N-80°17'W

# RNAV (GPS) Y RWY 26L

SE-3, 31 OCT 2024 to 28 NOV 2024