

WAAS CH 69310 W10A	APP CRS 105°	Rwy Idg 8177 TDZE 2869 Apt Elev 2872
--	------------------------	---

RNAV (GPS) RWY 10

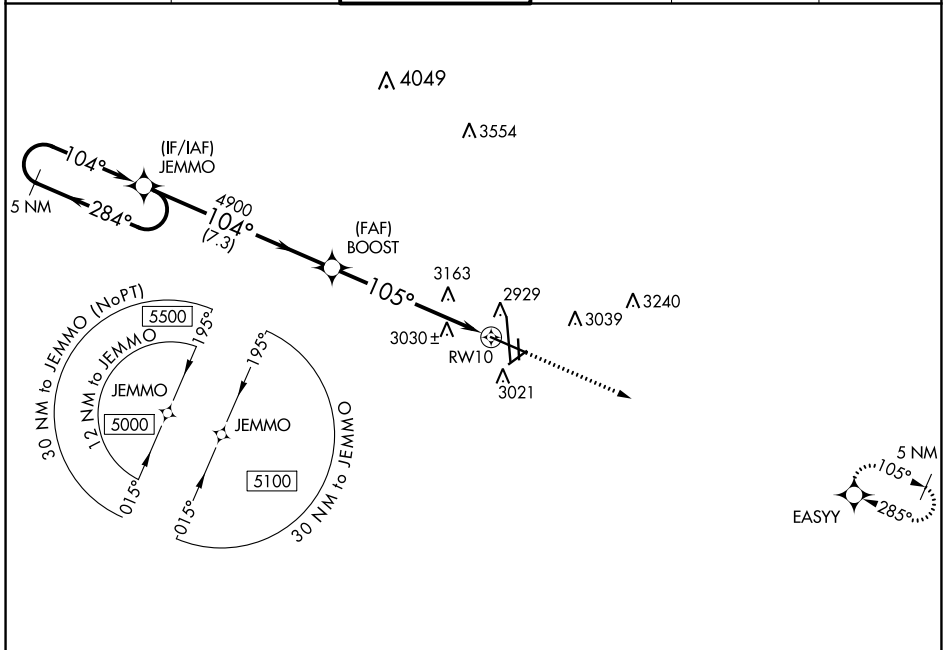
MIDLAND INTL AIR AND SPACE PORT (M.A.F.)

▼ For uncompensated Baro-VNAV systems, LNAV/VNAV NA below -11°C (13°F) or above 25°C (77°F). Circling Rwy 16L NA at night. DME/DME RNP-0.3 NA.
 ** RVR 1800 authorized with use of FD or AP or HUD to DA.



MISSED APPROACH:
Climb to 4700 direct
EASY and hold.

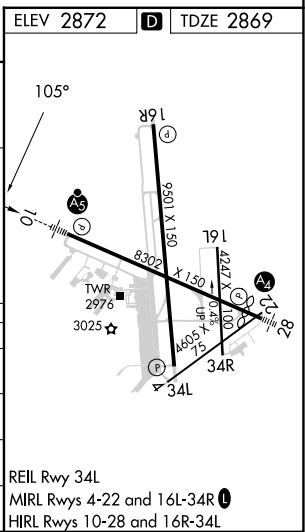
ATIS 126.8 235.975	MIDLAND APP CON* 124.6 290.4	MIDLAND TOWER* 118.7 (CTAF) 0 273.45	GND CON 121.9 348.6	CLNC DEL 118.05 317.65	UNICOM 122.95
------------------------------	--	--	-------------------------------	----------------------------------	-------------------------



SC-3, 31 OCT 2024 to 28 NOV 2024

SC-3, 31 OCT 2024 to 28 NOV 2024

5 NM Holding Pattern	ELEV 2872 D TDZE 2869			
GP 3.00° TCH 34	*LNAV only			
CATEGORY	A	B	C	D
LPV DA **	3069/24		200 (200-½)	
LNAV/VNAV DA	3394-1¼		525 (600-1¼)	
LNAV MDA	3480/24	611 (700-½)	3480-1⅓	611 (700-1⅓)
CIRCLING	3480-1	608 (700-1)	3480-1¼ 608 (700-1¼)	3520-2 648 (700-2)



REIL Rwy 34L
MIRL Rwy 4-22 and 16L-34R
HIRL Rwy 10-28 and 16R-34L