

MIDLAND, TEXAS

AL-258 (FAA)

23334

WAAS CH 50429 W22A	APP CRS 225°	Rwy Idg TDZE Apt Elev	4605 2855 2872
--	------------------------	-----------------------------	---

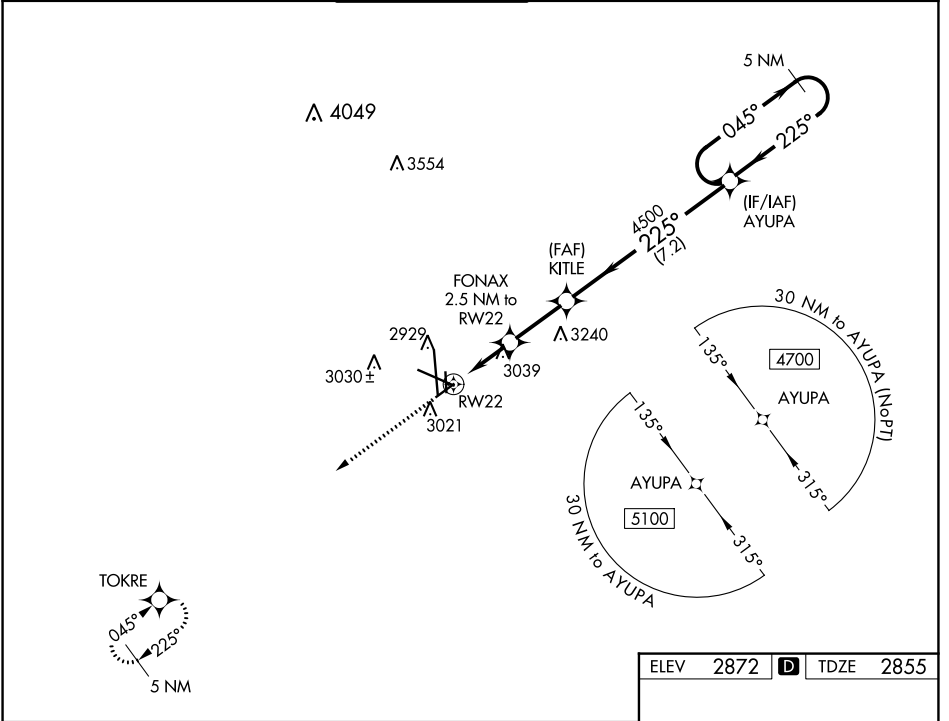
RNAV (GPS) RWY 22

MIDLAND INTL AIR AND SPACE PORT (M.A.F.)

RNP APCH. MISSED APPROACH: Climb to 5000 direct TOKRE and hold.

▼ For uncompensated Baro-VNAV systems, LNAV/VNAV NA below -11°C or above 25°C. Circling Rwy 16L NA at night.

ATIS 126.8 235.975	MIDLAND APP CON* 124.6 290.4	MIDLAND TOWER* 118.7 (CTAF) 0273.45	GND CON 121.9 348.6	CLNC DEL 118.05 317.65	UNICOM 122.95
------------------------------	--	---	-------------------------------	----------------------------------	-------------------------



SC-3, 31 OCT 2024 to 28 NOV 2024

SC-3, 31 OCT 2024 to 28 NOV 2024

5000	TOKRE				
*LNAV only	FONAX 2.5 NM to RW22	KITLE 4500	AYUPA	5 NM Holding Pattern	
	*1.3 NM to RW22	*3700	4500	045° →	← 225° 4700
	1.3	1.2	2.5 NM	7.2 NM	GP 3.00° TCH 50
CATEGORY	A	B	C	D	
LPV DA	3055-3/4		200 (200-3/4)		
LNAV/VNAV DA	3317-13/8		462 (500-13/8)		
LNAV MDA	3320-1 465 (500-1)		3320-13/8 465 (500-13/8)		
C CIRCLING	3440-1 568 (600-1)		3440-1 1/2 568 (600-1 1/2)		3520-2 648 (700-2)

ELEV	2872	D	TDZE	2855
------	------	----------	------	------

REIL Rwy 34L
MIRL Rwy 4-22 and 16L-34R **1**
HIRL Rwy 10-28 and 16R-34L

MIDLAND, TEXAS
Amdt 1C 25FEB21

MIDLAND INTL AIR AND SPACE PORT (M.A.F.)
31°57'N-102°12'W
RNAV (GPS) RWY 22