

APP CRS	Rwy Idg	<b>5004</b>
<b>165°</b>	TDZE	<b>5033</b>
	Apt Elev	<b>5039</b>

# RNAV (GPS) RWY 16

MILFORD MUNI/BEN AND JUDY BRISCOE FLD (MLF)

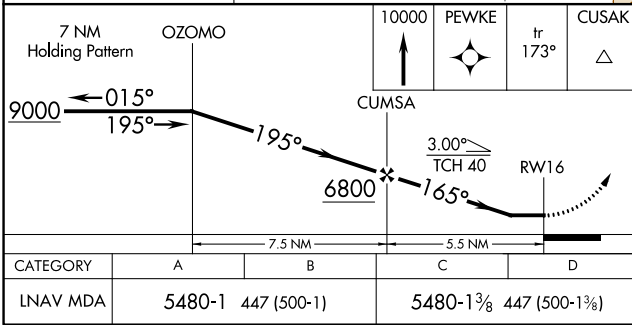
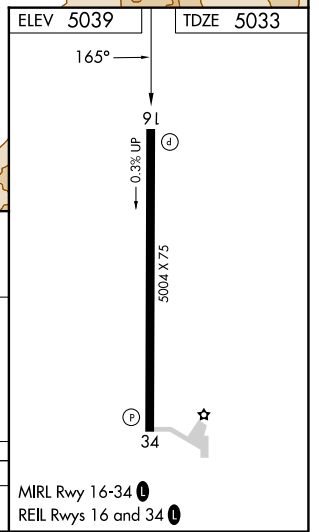
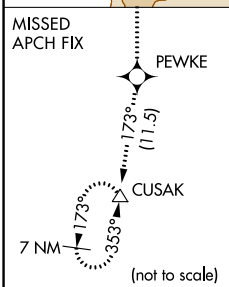
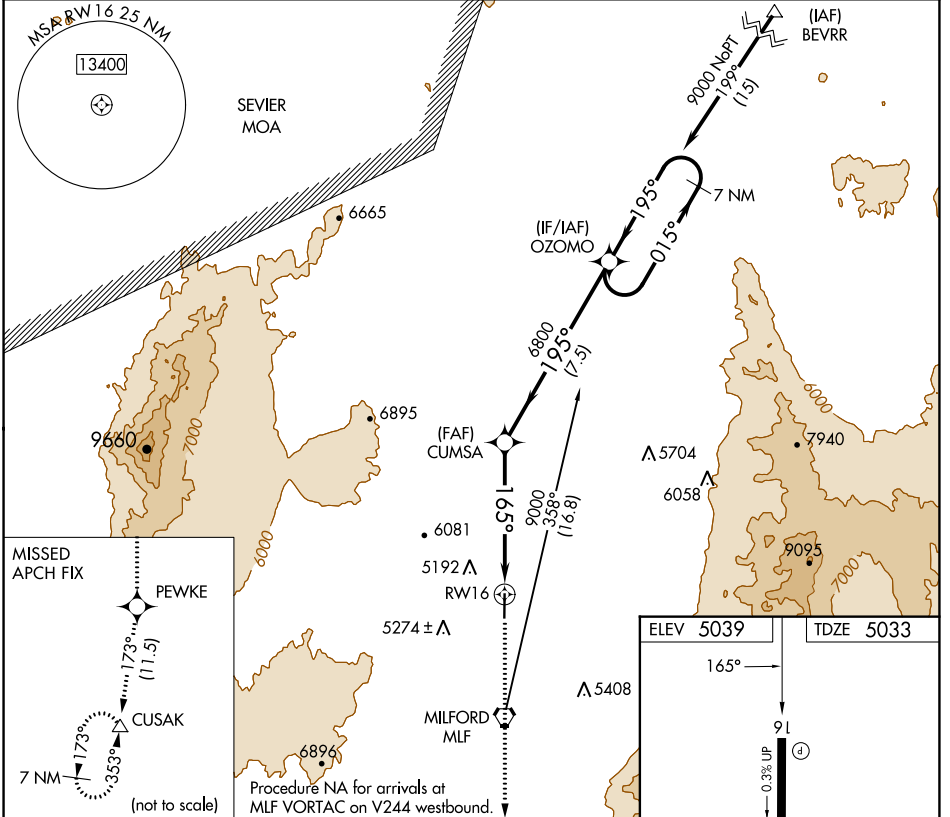
RNP APCH.

When local altimeter setting not received, use Cedar City altimeter setting and increase all MDA 200 feet and increase LNAV Cat C/D visibility 1/2 mile.

-27°C

MISSED APPROACH: Climb to 10000 direct PEWKE and on track 173° to CUSAK and hold.

ASOS <b>135.025</b>	SALT LAKE CENTER <b>125.575 379.275</b>	UNICOM <b>122.8 (CTAF)</b>
------------------------	--	-------------------------------



CATEGORY	A	B	C	D
LNAV MDA	5480-1	447 (500-1)	5480-1 3/8	447 (500-1 3/8)

MILFORD, UTAH  
Orig-C 07NOV19

MILFORD MUNI/BEN AND JUDY BRISCOE FLD (MLF)  
38°26'N-113°01'W

# RNAV (GPS) RWY 16

SW-4, 31 OCT 2024 to 28 NOV 2024

SW-4, 31 OCT 2024 to 28 NOV 2024