

WAAS CH 53628 W29A	APP CRS 287°	Rwy Idg TDZE Apt Elev	4713 408 408
--	------------------------	-----------------------------	---

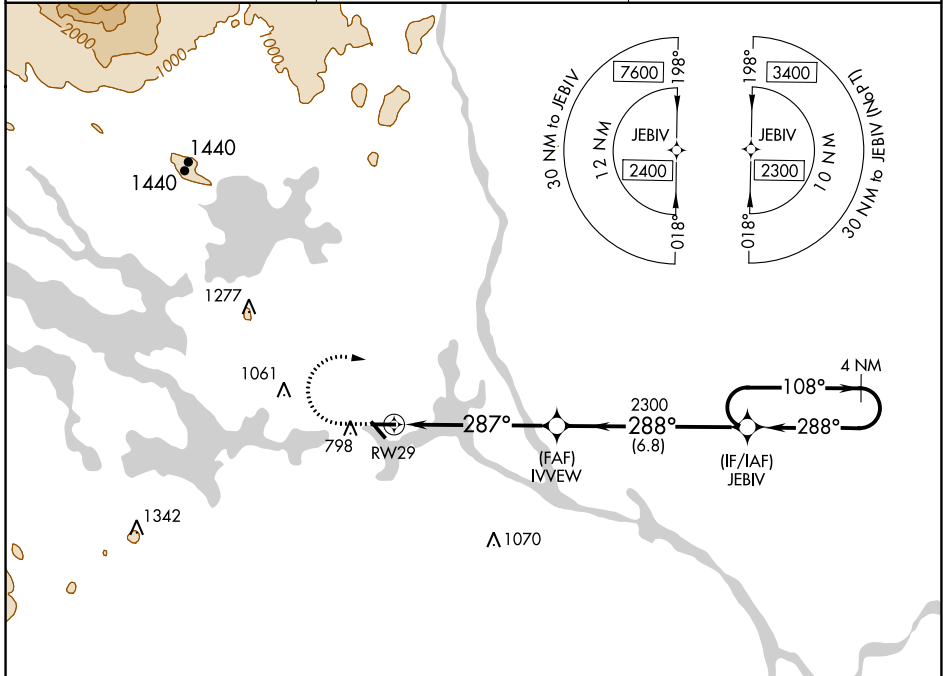
RNAV (GPS) RWY 29

MILLINOCKET MUNI (MLT)

⚠ Baro-VNAV NA when using Houlton altimeter setting. For uncompensated Baro-VNAV systems, LNAV/VNAV NA below -15°C (5°F) or above 41°C (105°F). DME/DME RNP-0.3 NA. Helicopter visibility reduction below 3/4 SM NA. When local altimeter setting not received, use Houlton altimeter setting and increase LPV DA to 817 feet and all Cats visibility 3/8 SM; increase LNAV/VNAV DA to 935 feet and all Cats visibility 3/8 SM; increase all MDAs 120 feet and LNAV Cat C/D visibility 3/8 SM, and Circling Cat A/B visibility 1/4 SM and Cat C visibility 1/2 SM. Night landing: Rwy 11, 34 NA.

MISSED APPROACH: Climb to 920 then climbing right turn to 2300 direct JEBIV and hold.

ASOS 135.225	BOSTON CENTER 120.25 346.4	UNICOM 122.8 (CTAF)
------------------------	--------------------------------------	-------------------------------



NE-1, 31 OCT 2024 to 28 NOV 2024

NE-1, 31 OCT 2024 to 28 NOV 2024

ELEV 408	TDZE 408	920	2300	JEBIV																									
<p>REIL Rwy 29 Ⓛ MIRL Rwy 11-29 Ⓛ</p>		<table border="1"> <thead> <tr> <th>CATEGORY</th> <th>A</th> <th>B</th> <th>C</th> <th>D</th> </tr> </thead> <tbody> <tr> <td>LPV DA</td> <td colspan="2">697-1</td> <td colspan="2">289 (300-1)</td> </tr> <tr> <td>LNAV/VNAV DA</td> <td colspan="2">815-1 3/8</td> <td colspan="2">407 (500-1 3/8)</td> </tr> <tr> <td>LNAV MDA</td> <td>920-1</td> <td>512 (600-1)</td> <td>920-1 1/2</td> <td>512 (600-1 1/2)</td> </tr> <tr> <td>CIRCLING</td> <td>1100-1</td> <td>692 (700-1)</td> <td>1100-2 692 (700-2)</td> <td>1380-3 972 (1000-3)</td> </tr> </tbody> </table>			CATEGORY	A	B	C	D	LPV DA	697-1		289 (300-1)		LNAV/VNAV DA	815-1 3/8		407 (500-1 3/8)		LNAV MDA	920-1	512 (600-1)	920-1 1/2	512 (600-1 1/2)	CIRCLING	1100-1	692 (700-1)	1100-2 692 (700-2)	1380-3 972 (1000-3)
CATEGORY	A	B	C	D																									
LPV DA	697-1		289 (300-1)																										
LNAV/VNAV DA	815-1 3/8		407 (500-1 3/8)																										
LNAV MDA	920-1	512 (600-1)	920-1 1/2	512 (600-1 1/2)																									
CIRCLING	1100-1	692 (700-1)	1100-2 692 (700-2)	1380-3 972 (1000-3)																									