

WAAS CH 56511 W36A	APP CRS 001°	Rwy Idg 7800 TDZE 26 Apt Elev 26
--	------------------------	---

RNAV (GPS) RWY 36

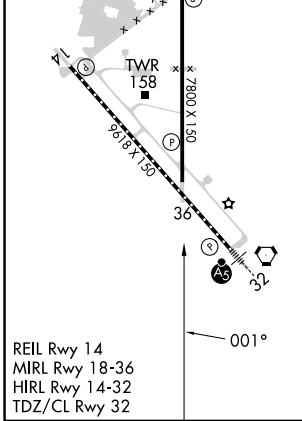
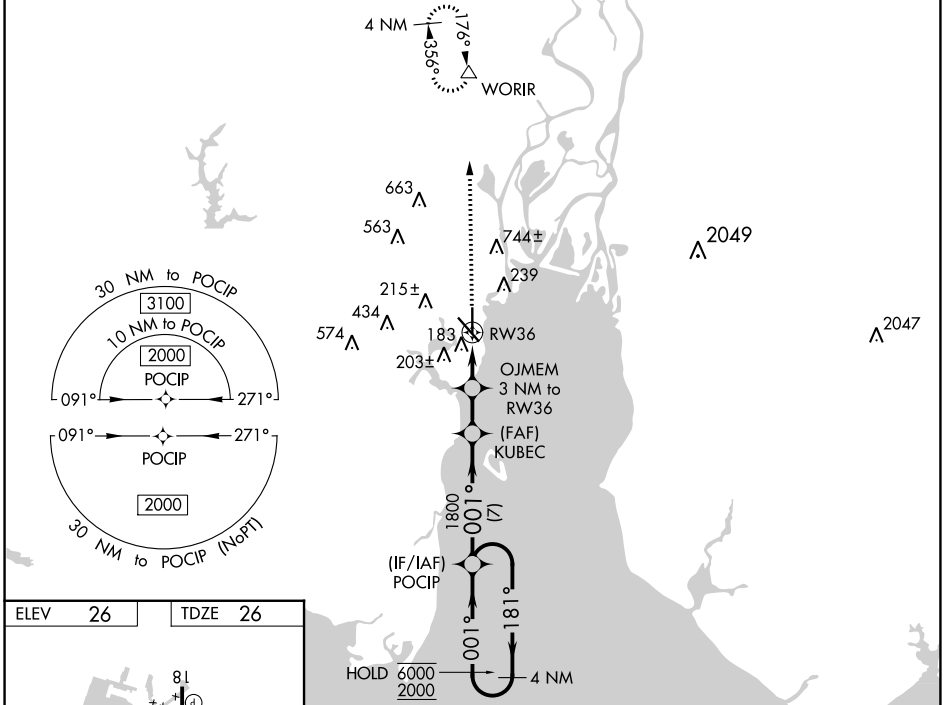
MOBILE INTL (BFM)

RNP APCH - GPS.

⚠ Rwy 36 helicopter visibility reduction below 3/4 SM NA.
For uncompensated Baro-VNAV systems, LNAV/VNAV NA below -2°C or above 54°C.

MISSED APPROACH:
Climb to 2300 direct
WORIR and hold.

ATIS 135.575	MOBILE APP CON * 118.5 269.3	INTERNATIONAL TOWER * 118.8 (CTAF) 251.1	GND CON 121.7 239.3	UNICOM 122.95
------------------------	--	--	-------------------------------	-------------------------



2300	WORIR	VGSI and RNAV glidepath not coincident (VGSI Angle 3.00°/TCH 62).		4 NM Holding Pattern
↑	△	OJMEM 3 NM to RW36	KUBEC	POICIP
		1.1 NM to RW36	1800	181° → 6000 ← 2000
		1.9 NM	1020	GP 3.00° TCH 50
		2.5 NM	1800	
		7 NM		

CATEGORY	A	B	C	D
LPV DA		304-1	278 (300-1)	
LNAV/VNAV DA		364-1	338 (400-1)	
LNAV MDA	440-1	414 (500-1)	440-1 1/8	414 (500-1 1/8)
C CIRCLING	680-1	654 (700-1)	680-1 3/4 654 (700-1 3/4)	1100-3 1074 (1100-3)

SE-4, 31 OCT 2024 to 28 NOV 2024

SE-4, 31 OCT 2024 to 28 NOV 2024