

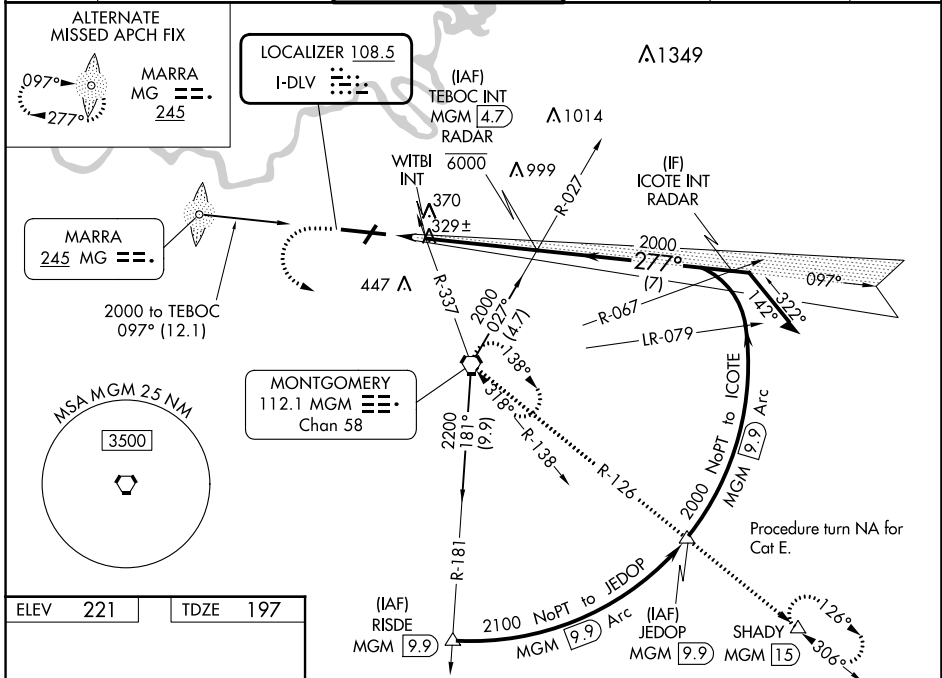
| | | | |
|--------------|-------------|----------|-------------|
| LOC I-DLV | APP CRS | Rwy Idg | 9020 |
| 108.5 | 277° | TDZE | 197 |
| | | Apt Elev | 221 |

ILS Y or LOC RWY 28

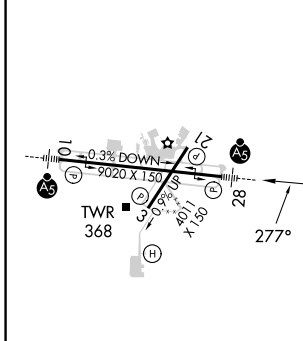
MONTGOMERY RGNL (DANNELLY FLD) (MGM)

| | | | |
|--|--|-----------|---|
| | For inop ALS, increase S-ILS 28 Cat E visibility to 3/4 SM; S-LOC 28 Cat C/D/E visibility to 1 3/8 SM and increase WITBI fix minimums S-LOC 28 Cat E visibility to 1 1/2 SM. Circling for Cat E NA north of Rwy 10-28. | MALSR | MISSED APPROACH: Climb to 700 then climbing left turn to 3000 direct MGM VORTAC and hold, continue climb-in-hold to 3000 (TACAN aircraft continue climb to 3500 on MGM VORTAC R-126 to SHADY/MGM 15 DME and hold SE, RT, 306° inbound). |
| | | | |

| | | | | | |
|----------------|----------------------|------------------------------|--------------------|--------------------|---------------|
| ATIS | MONTGOMERY APP CON * | DANNELLY TOWER * | GND CON | CLNC DEL | UNICOM |
| 120.675 | 124.0 363.025 | 119.7 (CTAF) 0 360.85 | 121.7 348.6 | 118.3 270.3 | 122.95 |



| | | | |
|------|-----|------|-----|
| ELEV | 221 | TDZE | 197 |
|------|-----|------|-----|



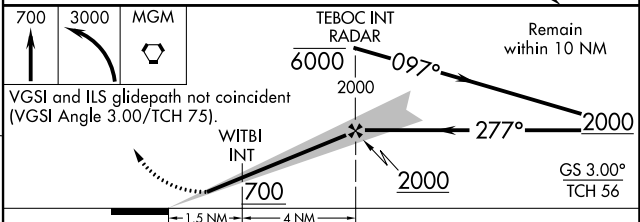
REIL Rwy 3

MIRL Rwy 3-21

HIRL Rwy 10-28

FAF to MAP 5.5 NM

| | | | | | |
|---------|------|------|------|------|------|
| Knots | 60 | 90 | 120 | 150 | 180 |
| Min:Sec | 5:30 | 3:40 | 2:45 | 2:12 | 1:50 |



| CATEGORY | A | B | C | D | E |
|--|-----------------------|---------------|-----------------------|-------|-----------|
| S-ILS 28 | 397-1/2 200 (200-1/2) | | | | |
| S-LOC 28 | 700-1/2 | 503 (500-1/2) | 700-1 503 (500-1) | | |
| CIRCLING | 700-1 | 479 (500-1) | 800-1 1/2 | 860-2 | 860-2 1/4 |
| WITBI FIX MINIMUMS (DUAL VOR RECEIVERS REQUIRED) | | | | | |
| S-LOC 28 | 620-1/2 | 423 (400-1/2) | 620-3/4 423 (400-3/4) | | |
| CIRCLING | 700-1 | 479 (500-1) | 800-1 1/2 | 860-2 | 860-2 1/4 |

SE-4, 31 OCT 2024 to 28 NOV 2024

SE-4, 31 OCT 2024 to 28 NOV 2024