

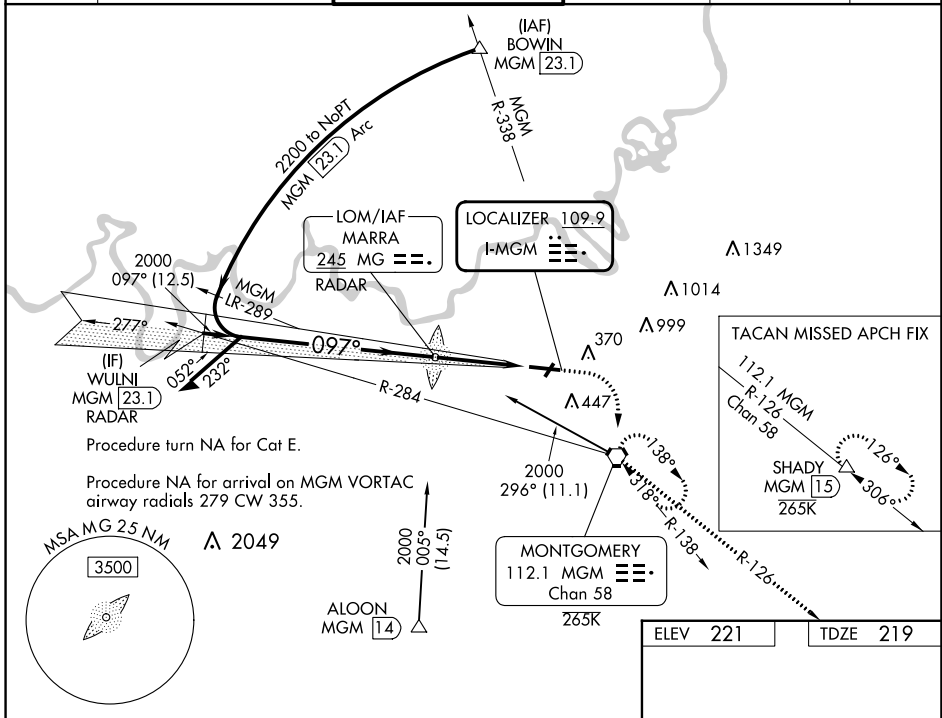
LOC I-MGM	APP CRS	Rwy Idg	9020
109.9	097°	TDZE	219
		Apt Elev	221

ILS Z or LOC Z RWY 10

MONTGOMERY RGNL (DANNELLY FLD) (MGM)

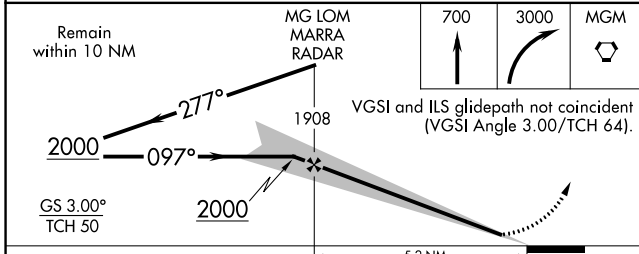
RADAR or DME or ADF required.		MALSR	MISSED APPROACH: Climb to 700 then climbing right turn to 3000 direct MGM VORTAC and hold, continue climb-in-hold to 3000 (TACAN aircraft continue climb to 3500 on MGM VORTAC R-126 to SHADY/MGM 15 DME and hold SE, RT, 306° inbound).
<p>▼ Circling NA for Cat E north of Rwy 10-28. For inop ALS, increase S-ILS 10** Cat E visibility to RVR 4000, and increase S-LOC 10 Cat E visibility to 1$\frac{3}{8}$ SM. **RVR 1800 authorized with the use of FD or AP or HUD to DA.</p>			

ATIS	MONTGOMERY APP CON *	DANNELLY TOWER *	GND CON	CLNC DEL	UNICOM
120.675	124.0 363.025	119.7 (CTAF) 360.85	121.7 348.6	118.3 270.3	122.95



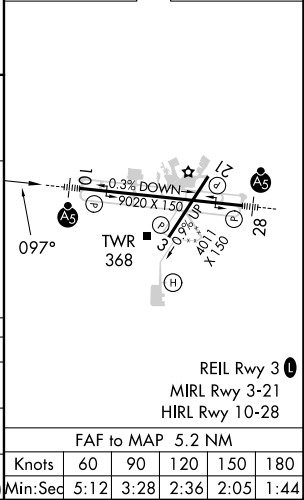
SE-4, 31 OCT 2024 to 28 NOV 2024

SE-4, 31 OCT 2024 to 28 NOV 2024



ELEV	221	TDZE	219
------	-----	------	-----

CATEGORY	A	B	C	D	E
S-ILS 10**	419/24 200 (200- $\frac{1}{2}$)				
S-LOC 10	660/24	441 (500- $\frac{1}{2}$)	660/45	441 (500- $\frac{3}{8}$)	
C CIRCLING	700-1	479 (500-1)	800-1 $\frac{1}{2}$ 579 (600-1 $\frac{1}{2}$)	860-2 639 (700-2)	860-2 $\frac{1}{4}$ 639 (700-2 $\frac{1}{4}$)



REIL Rwy 3	
MIRL Rwy 3-21	
HIRL Rwy 10-28	
FAF to MAP 5.2 NM	
Knots	60 90 120 150 180
Min:Sec	5:12 3:28 2:36 2:05 1:44