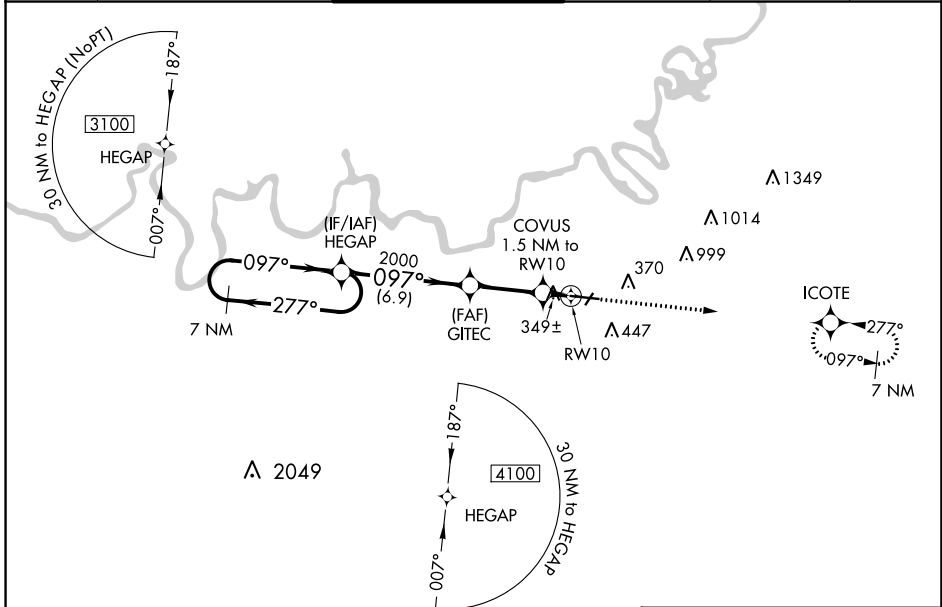


WAAS CH 50100 W10A	APP CRS 097°	Rwy Idg 9020 TDZE 219 Apt Elev 221
--	------------------------	---

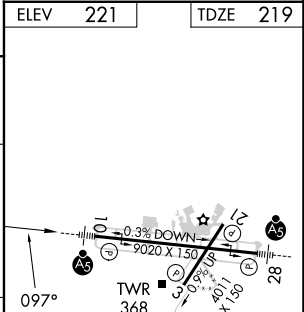
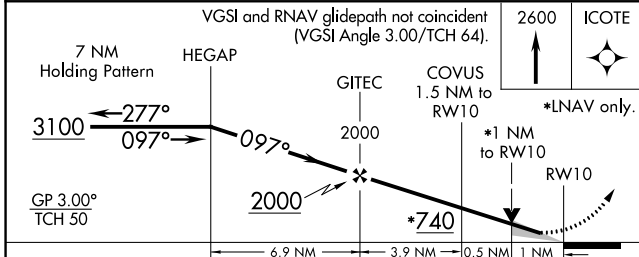
RNAV (GPS) RWY 10

MONTGOMERY RGNL (DANNELLY FLD) (MGM)

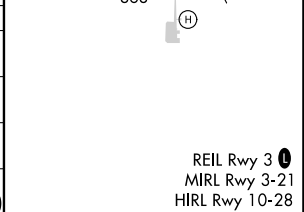
RNP APCH.		DANNELLY TOWER ★		GND CON	CLNC DEL	UNICOM
<p>▼ For uncompensated Baro-VNAV systems, LNAV/VNAV NA below -8°C (18°F) or above 54°C (130°F). For inop MALS, increase LPV Cat E visibility to RVR 4000; increase LNAV/VNAV Cat E visibility to RVR 5000; increase LNAV Cats C/D/E visibility to 1½ mile. Circling for Cat E NA north of Rwy 10-28. **RVR 1800 authorized with use of FD or AP or HUD to DA.</p>		★ 119.7 (CTAF) 360.85		121.7 348.6	118.3 270.3	122.95
ATIS	MONTGOMERY APP CON ★					
120.675	124.0 363.025					



ELEV	221	TDZE	219
------	-----	------	-----



CATEGORY	A	B	C	D	E
LPV DA **	419/24		200 (200-½)		
LNAV/VNAV DA	530/24		311 (400-½)		
LNAV MDA	600/24	381 (400-½)	600/35	381 (400-¾)	
CIRCLING	700-1	479 (500-1)	800-1½ 579 (600-1½)	860-2 639 (700-2)	860-2¼ 639 (700-2¼)



SE-4, 31 OCT 2024 to 28 NOV 2024

SE-4, 31 OCT 2024 to 28 NOV 2024