

# HI-ILS or LOC/DME RWY 1

LOC I-RFB <b>110.1</b>	APCH CRS <b>007°</b>	Rwy ldg THRE Arpt Elev <b>9000</b> <b>579</b> <b>580</b>
---------------------------	-------------------------	---

AL-276 [USAF]

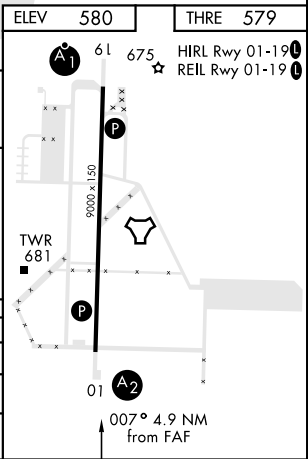
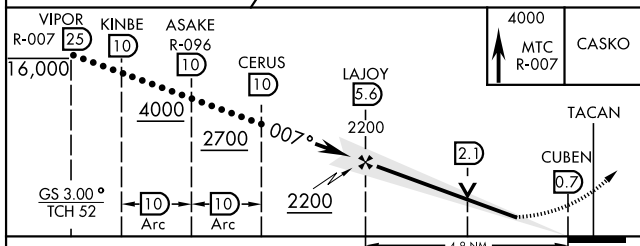
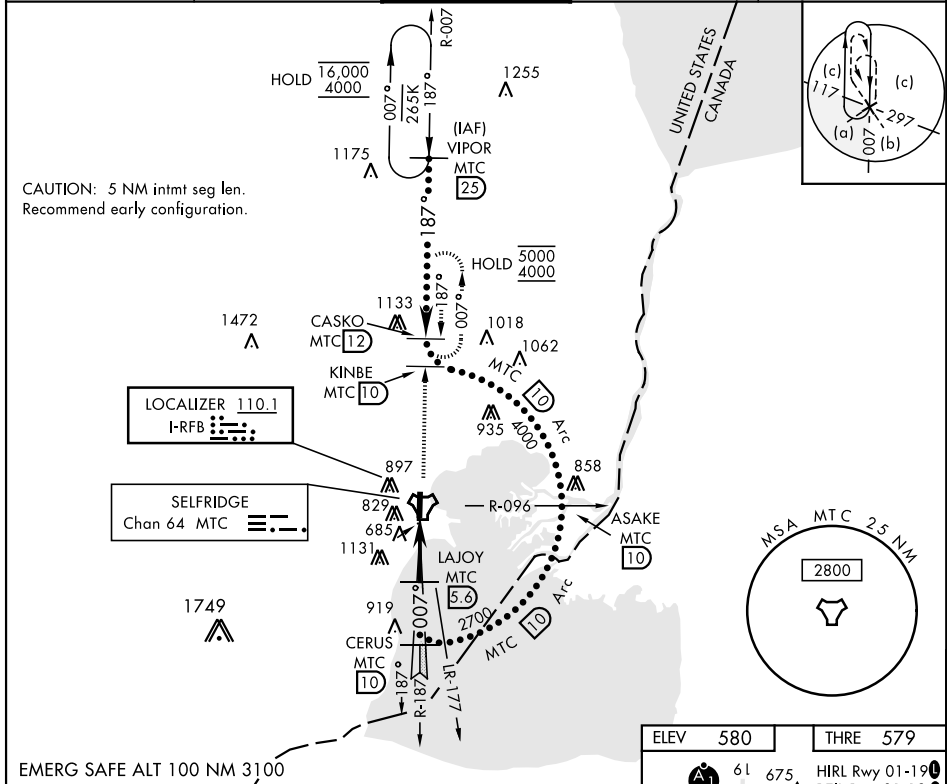
SELFRIDGE ANGB (KMTC)

▼ \* When ALS inop, increase RVR to 50 and vis to 1 mile.  
 \*\* When ALS inop, increase vis to 1 3/8 miles.  
 \*\*\* Circling not authorized W of Rwy 01-19.



MISSED APPROACH: Climb to 4000 on MTC R-007 to CASKO and hold, continue climb-in-hold to 4000.

ATIS <b>125.325 270.1</b>	APP CON <b>119.6 318.2</b>	TOWER ★ <b>120.15 (CTAF) 0 225.4</b>	GND CON <b>128.3 275.8</b>	CLNC DEL <b>128.3 275.8</b>
------------------------------	-------------------------------	---	-------------------------------	--------------------------------



CATEGORY	C	D	E
S-ILS/DME 1*	907/40	328 (400-3/4)	
S-LOC/DME 1**	1060/60	481 (500-1 1/2)	
CIRCLING ***	1120-1 1/2 541 (600-1 1/2)	1140-2	561 (600-2)

# HI-ILS or LOC/DME RWY 01

EC-1, 31 OCT 2024 to 28 NOV 2024

EC-1, 31 OCT 2024 to 28 NOV 2024